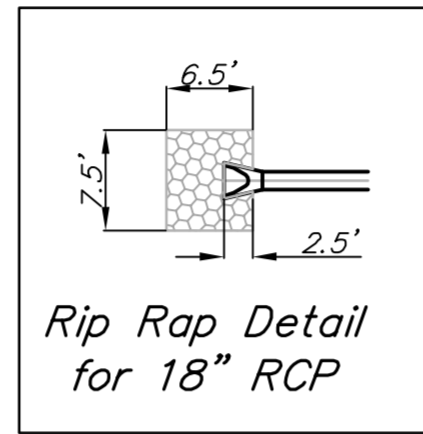


BENCHMARK:
 BM #4 - Railroad Spike in the First High Line Pole West of the East Mobile Home Park Drive on the South Side of MacArthur
 Sta. 25+70, 40' Rt.
 Elev. = 98.59 City Datum

CAUTION!
 Existing
 6" Gas
 U/G AT&T
 Crossings

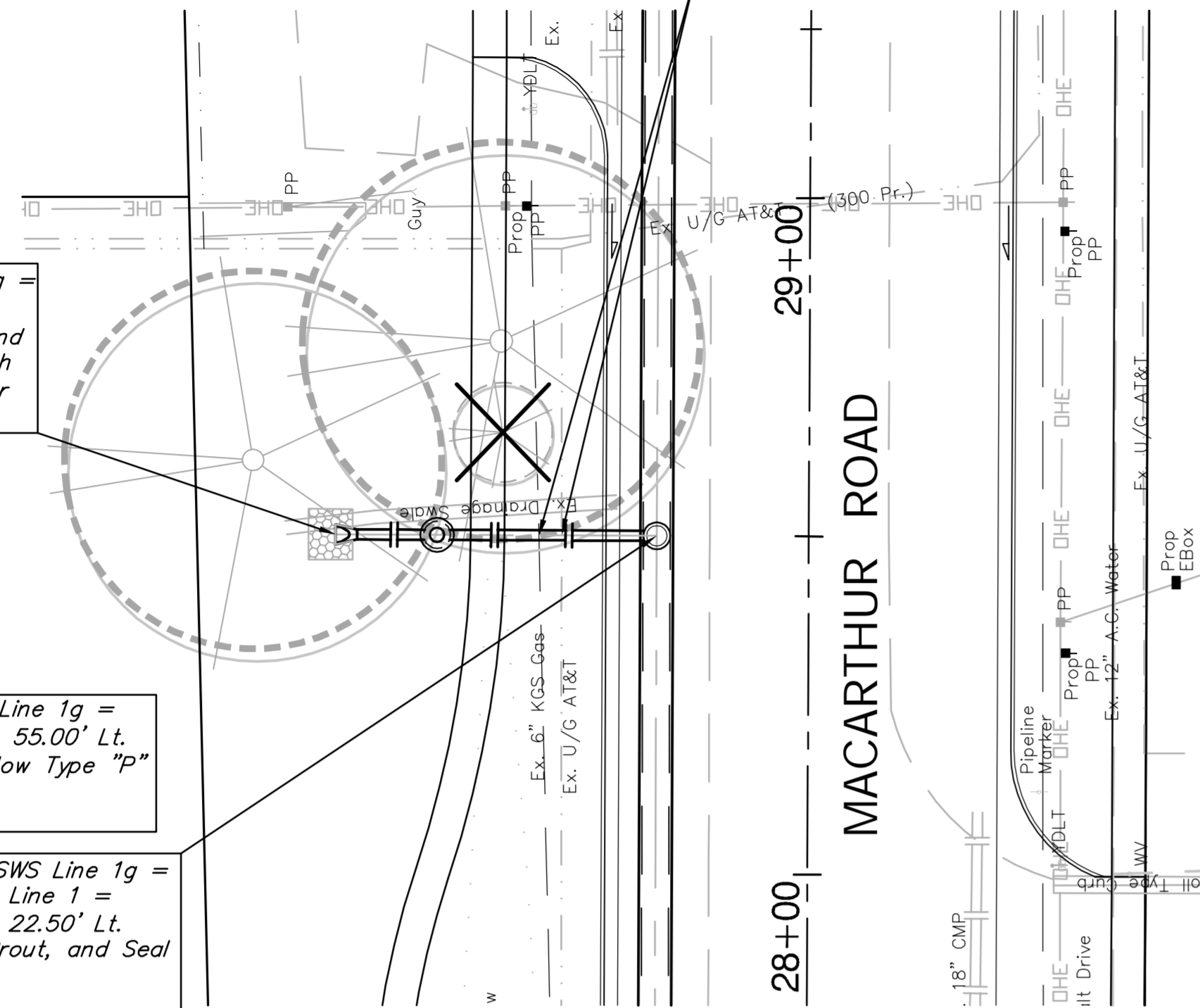
SCALE:
 HORIZONTAL: 1" = 20'
 VERTICAL: 1" = 5'



Sta. 0+00.00, Begin SWS Line 1g =
 B.L. Sta. 28+50.00, 70.00' Lt.
 Install 1-18" RCP End Section and
 5.3 S.Y. Light Stone Rip Rap with
 6" Filter Course and Toe Wall per
 City Specs.

Sta. 0+15.00, SWS Line 1g =
 B.L. Sta. 28+50.00, 55.00' Lt.
 Construct Std. Shallow Type "P"
 Manhole (4' Dia.)
 Top Elev. = 94.80

Sta. 0+47.50, End SWS Line 1g =
 Sta. 24+38.10, SWS Line 1 =
 B.L. Sta. 28+50.00, 22.50' Lt.
 Connect to RCBC, Grout, and Seal
 Tight.
 Top Elev. = 94.46



BENCHMARK:
 BM #4 - Railroad Spike in the First High Line Pole West of the East Mobile Home Park Drive on the South Side of MacArthur
 Sta. 25+70, 40' Rt.
 Elev. = 98.59 City Datum

CAUTION!
 Existing
 U/G AT&T
 Crossing

SCALE:
 HORIZONTAL: 1" = 20'
 VERTICAL: 1" = 5'

Sta. 0+00.00, Begin SWS Line 1h =
 B.L. Sta. 31+36.00, 31.50' Lt.
 Construct Inlet (Double)(Type 1)
 (11' 4" X 4' 4")
 Top Elev. = 94.43

Sta. 0+09.00, SWS Line 1h =
 Sta. 27+24.10, SWS Line 1 =
 B.L. Sta. 31+36.00, 22.50' Lt.
 Connect to RCBC, Grout, and
 Seal Tight.
 Top Elev. = 94.18

Sta. 0+63.00, End SWS Line 1h =
 B.L. Sta. 31+36.00, 31.50' Rt.
 Construct Inlet (Double)(Type 1)
 (11' 4" X 4' 4")
 Top Elev. = 94.35

