

BENCHMARK:
 BM #5 - City of Wichita Disc Located 0.5 miles East of Meridian on the North Side of MacArthur
 Sta. 36+07, 84' Lt.
 Elev. = 93.61 City Datum

SILVER SPUR 4TH ADDITION
 1

Sta. 0+00.00, Begin SWS Line 1i =
 B.L. Sta. 34+00.00, 29.68' Lt.
 Construct Inlet (Double)(Type 1)
 (11' 4" X 4' 4")
 Top Elev. = 93.70

CAUTION!
 Existing
 6" Gas
 U/G CATV
 in Vicinity

Sta. 0+09.00, SWS Line 1i =
 Sta. 29+88.10, SWS Line 1 =
 B.L. Sta. 34+00.00, 17.00' Lt.
 Connect to RCBC, Grout, &
 Seal Tight.
 Top Elev. = 93.52

CAUTION!
 Existing
 U/G AT&T
 Crossing

MACARTHUR ROAD

SWS Line 1

SILVER SPUR 2ND ADDITION
 1

CAUTION!
 Existing
 4" Pipeline
 U/G SWB
 12" Water
 in Vicinity

Sta. 0+63.00, Begin SWS Line 1i =
 B.L. Sta. 34+00.00, 31.50' Rt.
 Construct Inlet (Double)(Type 1)
 (11' 4" X 4' 4")
 Top Elev. = 93.70

SCALE:
 HORIZONTAL: 1" = 20'
 VERTICAL: 1" = 5'



FHWA REGION NO.	STATE	PROJECT NO.	FISCAL YEAR	SHEET NO.	TOTAL SHEETS
7	KANSAS	87 N-0347-01	2007	40	123

BENCHMARK:
 BM #5 - City of Wichita Disc Located 0.5 miles East of Meridian on the North Side of MacArthur
 Sta. 36+07, 84' Lt.
 Elev. = 93.61 City Datum

CLARENCE AVENUE

CAUTION!
 Existing
 6" Gas
 U/G CATV
 in Vicinity

SILVER SPUR 4TH ADDITION
 2

Sta. 0+00.00, Begin SWS Line 1j =
 B.L. Sta. 36+00.00, 31.50' Lt.
 Construct Inlet (Double)(Type 1)
 (11' 4" X 4' 4")
 Top Elev. = 92.94

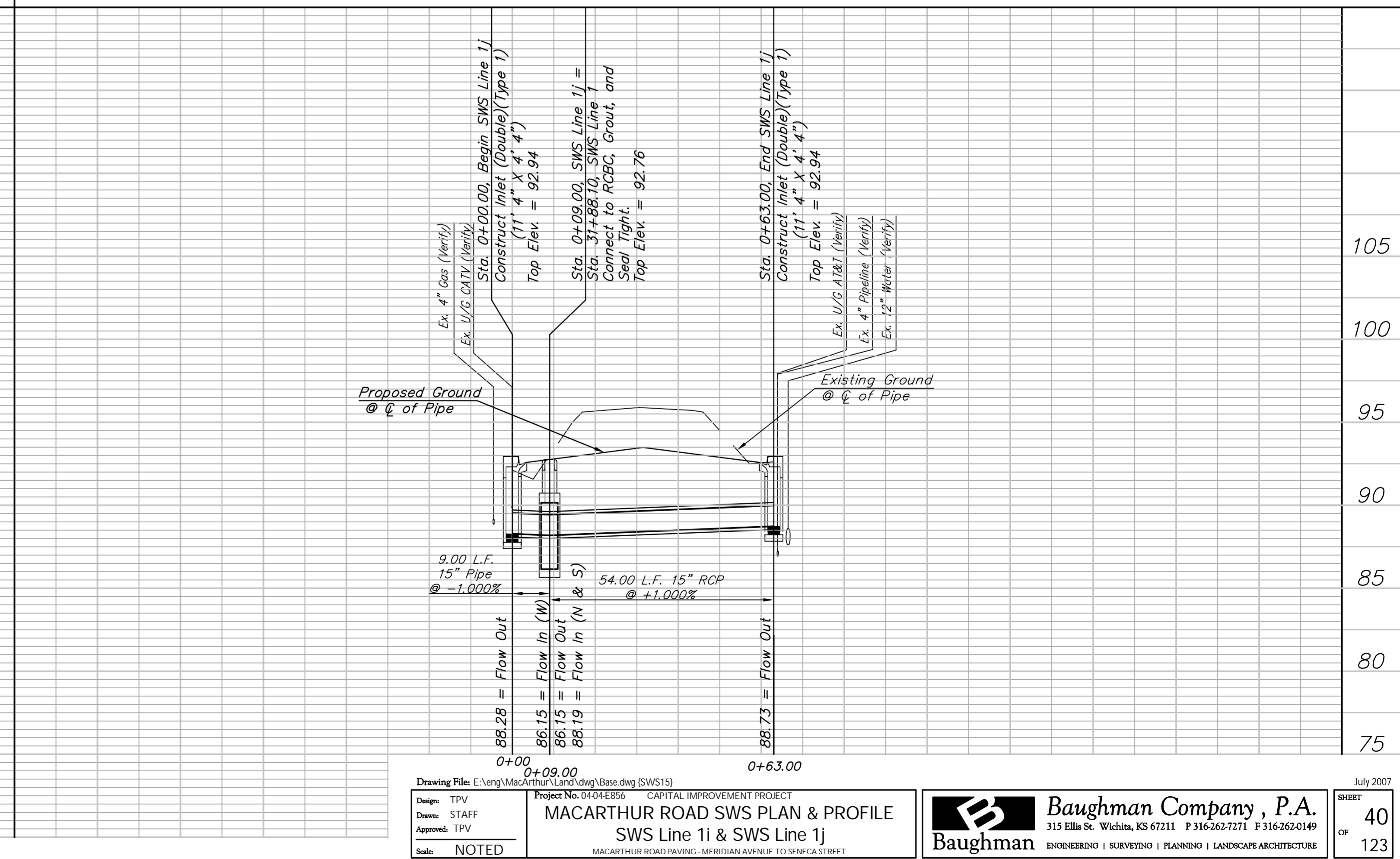
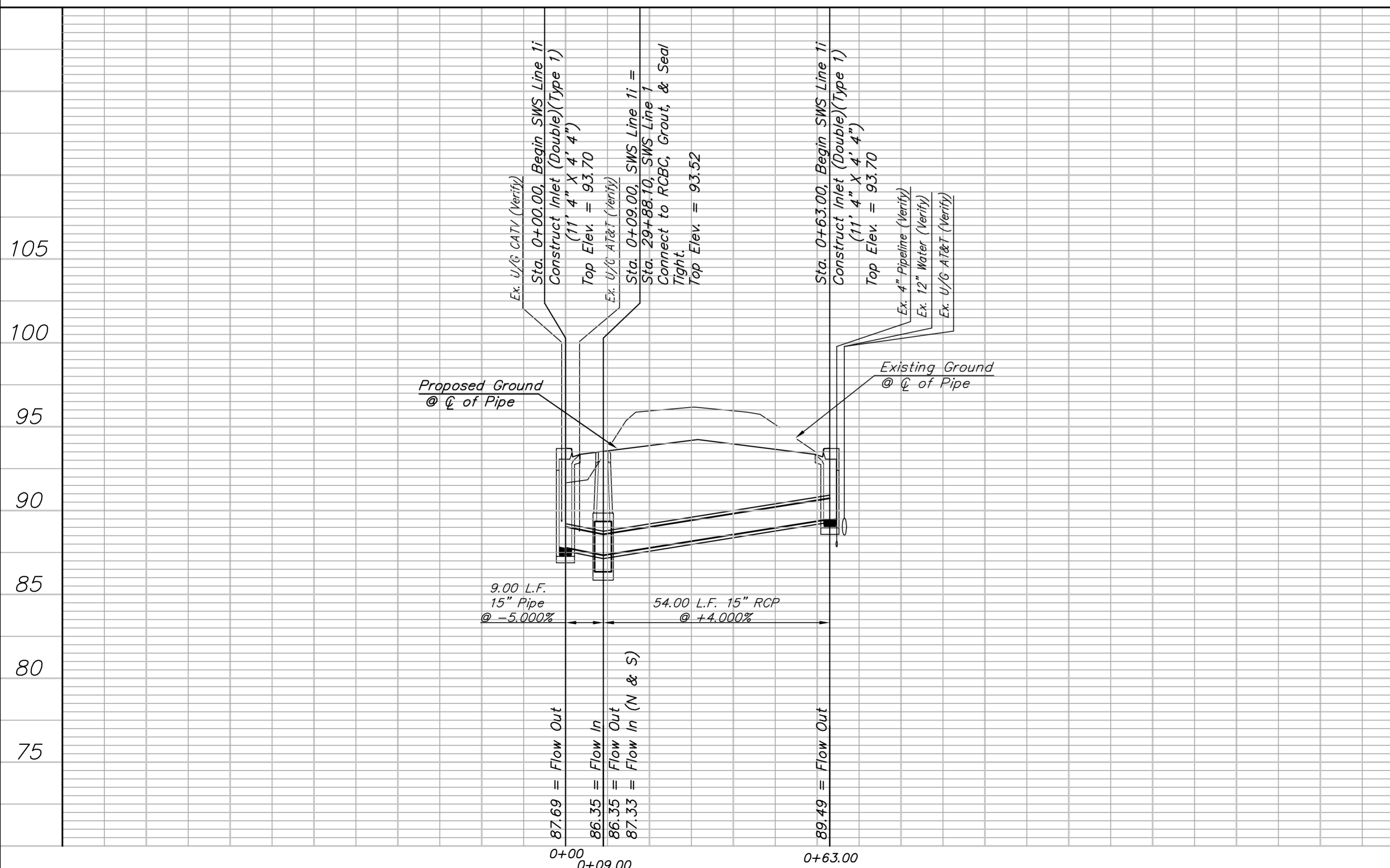
Sta. 0+09.00, SWS Line 1j =
 Sta. 31+88.10, SWS Line 1 =
 B.L. Sta. 36+00.00, 22.50' Lt.
 Connect to RCBC, Grout, and
 Seal Tight.
 Top Elev. = 92.76

Sta. 0+63.00, End SWS Line 1j =
 B.L. Sta. 36+00.00, 31.50' Rt.
 Construct Inlet (Double)(Type 1)
 (11' 4" X 4' 4")
 Top Elev. = 92.94

CAUTION!
 Existing
 4" Pipeline
 U/G SWB
 12" Water
 in Vicinity

SILVER SPUR 2ND ADDITION
 1

SCALE:
 HORIZONTAL: 1" = 20'
 VERTICAL: 1" = 5'



Drawing File: E:\eng\MacArthur\Land\dwg\Bases.dwg (SWS15)
 Project No. 04-04-E856 CAPITAL IMPROVEMENT PROJECT
 MACARTHUR ROAD SWS PLAN & PROFILE
 SWS Line 1i & SWS Line 1j
 MACARTHUR ROAD PAVING - MERIDIAN AVENUE TO SENECA STREET
 Scale: NOTED

Baughman Company, P.A.
 315 Ellis St., Wichita, KS 67211 P 316-262-7271 F 316-262-0149
 ENDSERVING | SURVEYING | PLANNING | LANDSCAPE ARCHITECTURE

July 2007
 SHEET
 OF 40
 123