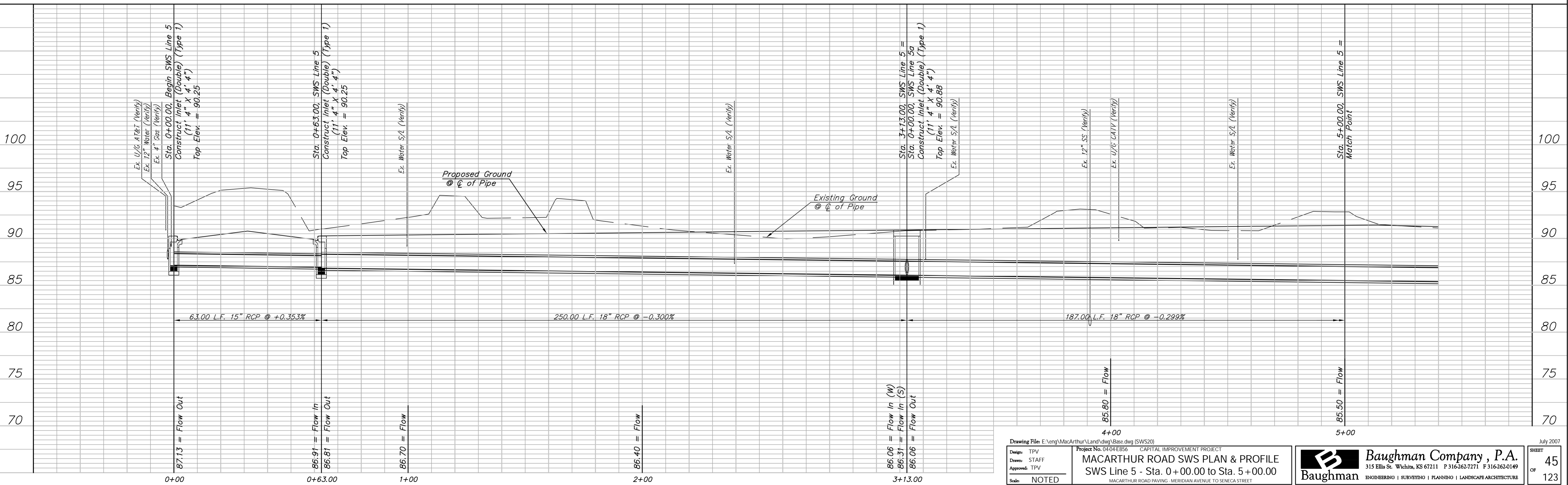
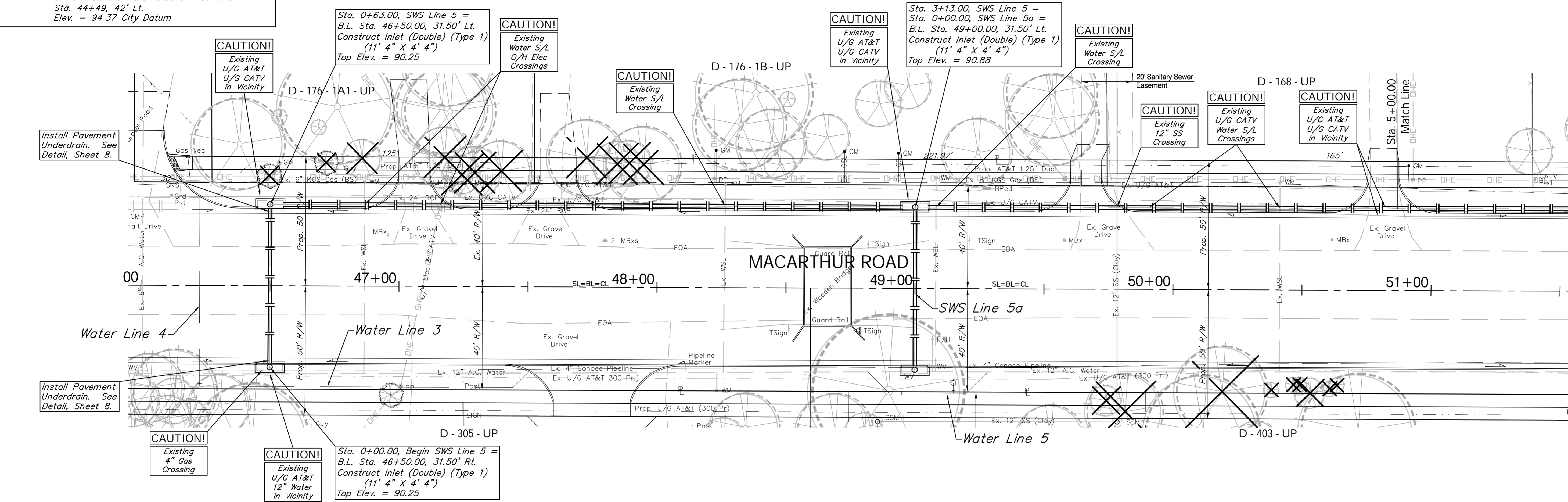


BENCHMARK:
 BM #6 - Railroad Spike in the First High Line Pole West
 of Fern on the North Side of MacArthur
 Sta. 44+49, 42' Lt.
 Elev. = 94.37 City Datum

FHWA REGION NO.	STATE	PROJECT NO.	FISCAL YEAR	SHEET NO.	TOTAL SHEETS
7	KANSAS	87 N-0347-01	2007	45	123



Drawing File: E:\eng\MacArthur\Land\dwg\Base.dwg (SWS20) Project No. 0404E856 CAPITAL IMPROVEMENT PROJECT MACARTHUR ROAD SWS PLAN & PROFILE SWS Line 5 - Sta. 0+00.00 to Sta. 5+00.00 MACARTHUR ROAD PAVING - MERIDIAN AVENUE TO SENECA STREET		<p>Baughman Company, P.A. 315 Ellis St., Wichita, KS 67211 P 316-262-7171 F 316-262-0149 ENGINEERING SURVEYING PLANNING LANDSCAPE ARCHITECTURE</p>	July 2007 SHEET 45 OF 123
Design: TPV Drawn: STAFF Approved: TPV Scale: NOTED			