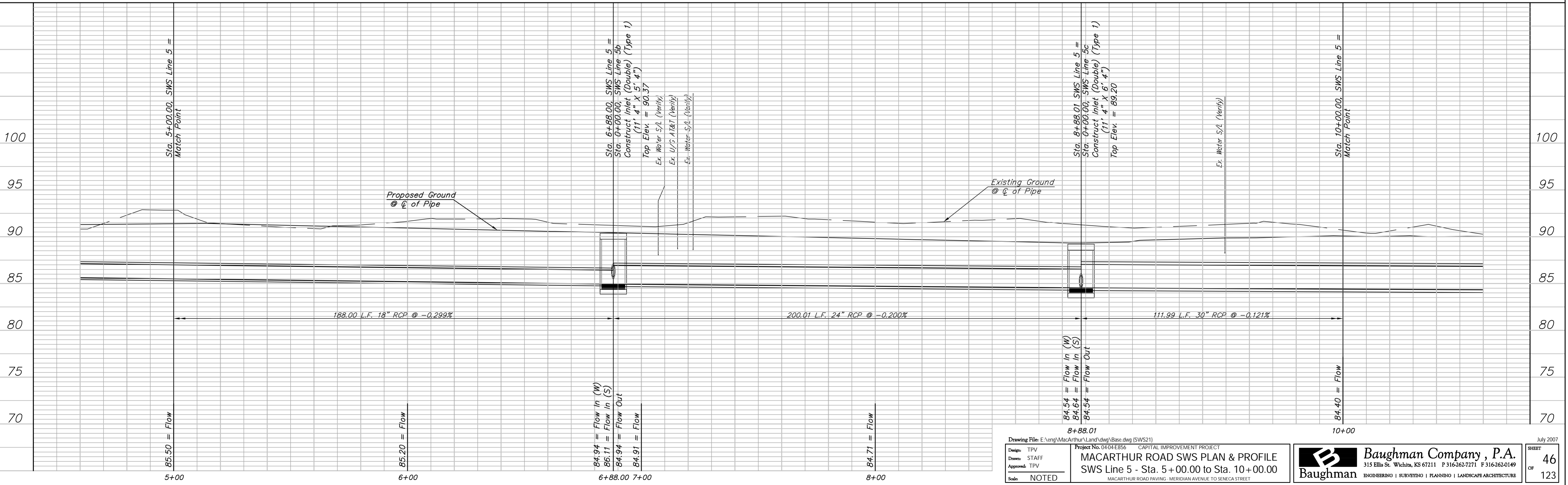
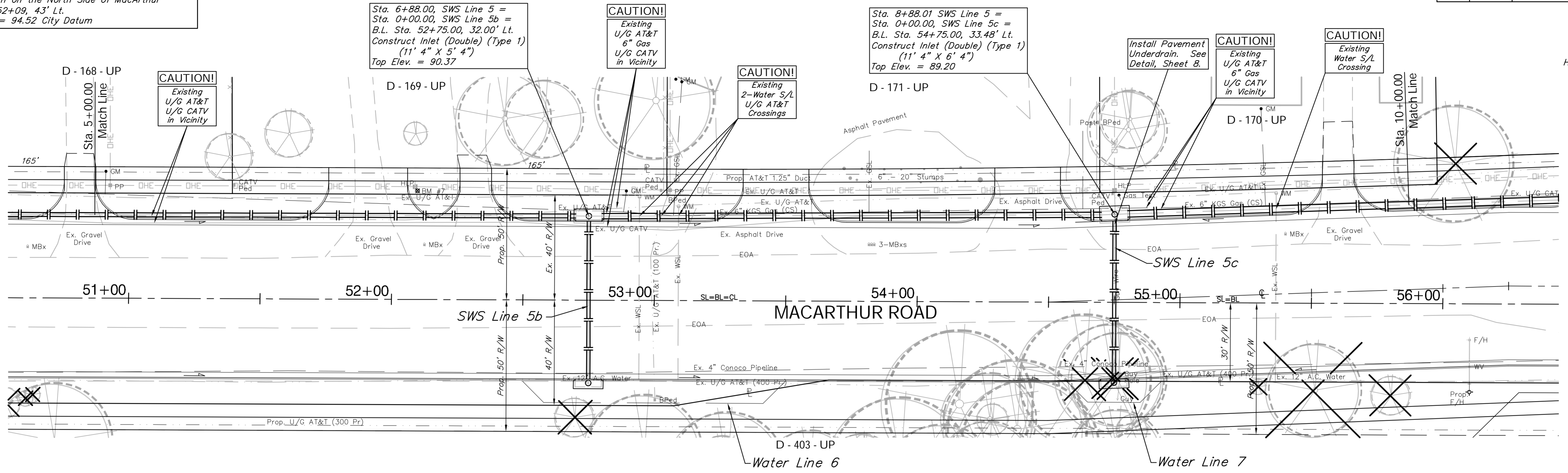


BENCHMARK:
 BM #7 - Railroad Spike in the Third High Line Pole East
 of Fern on the North Side of MacArthur
 Sta. 52+09, 4.3' Lt.
 Elev. = 94.52 City Datum

FHWA REGION NO.	STATE	PROJECT NO.	FISCAL YEAR	SHEET NO.	TOTAL SHEETS
7	KANSAS	87 N-0347-01	2007	46	123

SCALE:
 HORIZONTAL: 1" = 20'
 VERTICAL: 1" = 5'



Drawing File: E:\eng\MacArthur\Land\dwg\Base.dwg (SWS21)
 Project No. 0404E856 CAPITAL IMPROVEMENT PROJECT
MACARTHUR ROAD SWS PLAN & PROFILE
 SWS Line 5 - Sta. 5+00.00 to Sta. 10+00.00
 MACARTHUR ROAD PAVING - MERIDIAN AVENUE TO SENECA STREET
 Scale: NOTED

Baughman Company, P.A.
 315 Ellis St., Wichita, KS 67211 P 316-262-7171 F 316-262-0149
 ENGINEERING | SURVEYING | PLANNING | LANDSCAPE ARCHITECTURE

SHEET 46 OF 123