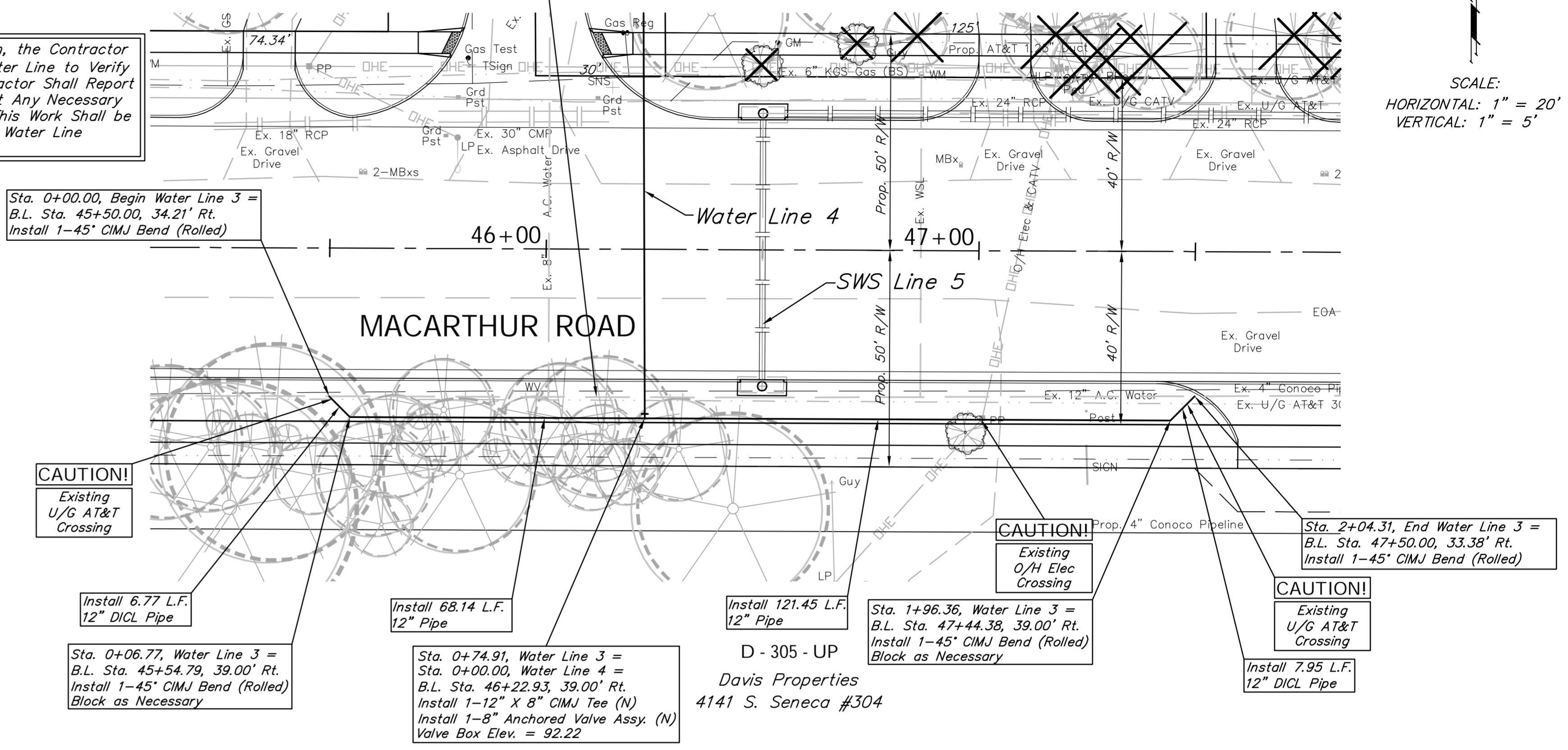
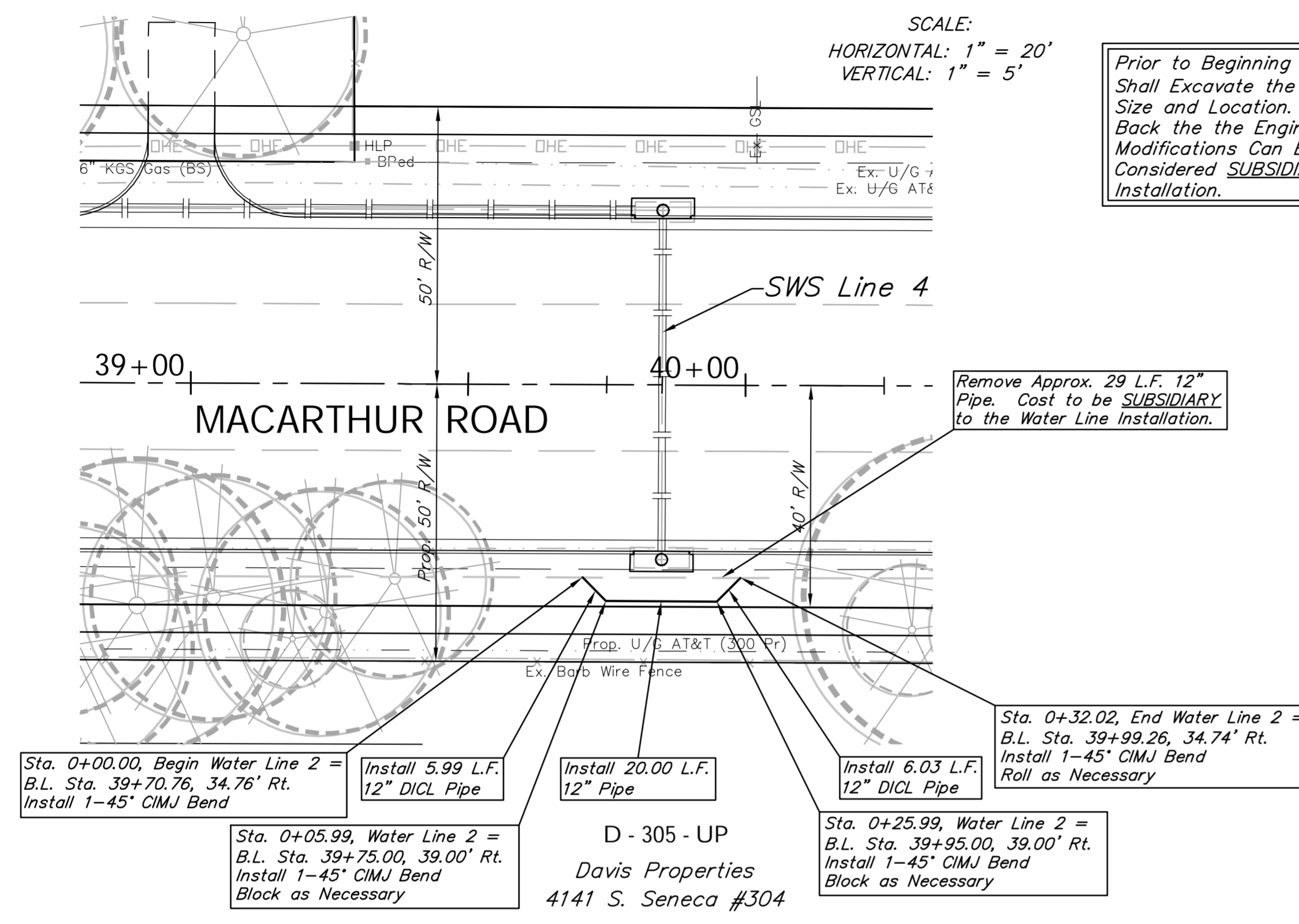


BENCHMARK:
 BM #5 - City of Wichita Disc Located 0.5 miles East of Meridian on the North Side of MacArthur
 Sta. 36+07, 84' Lt.
 Elev. = 93.61 City Datum

BENCHMARK:
 BM #6 - Railroad Spike in the First High Line Pole West of Fern on the North Side of MacArthur
 Sta. 44+49, 42' Lt.
 Elev. = 94.37 City Datum

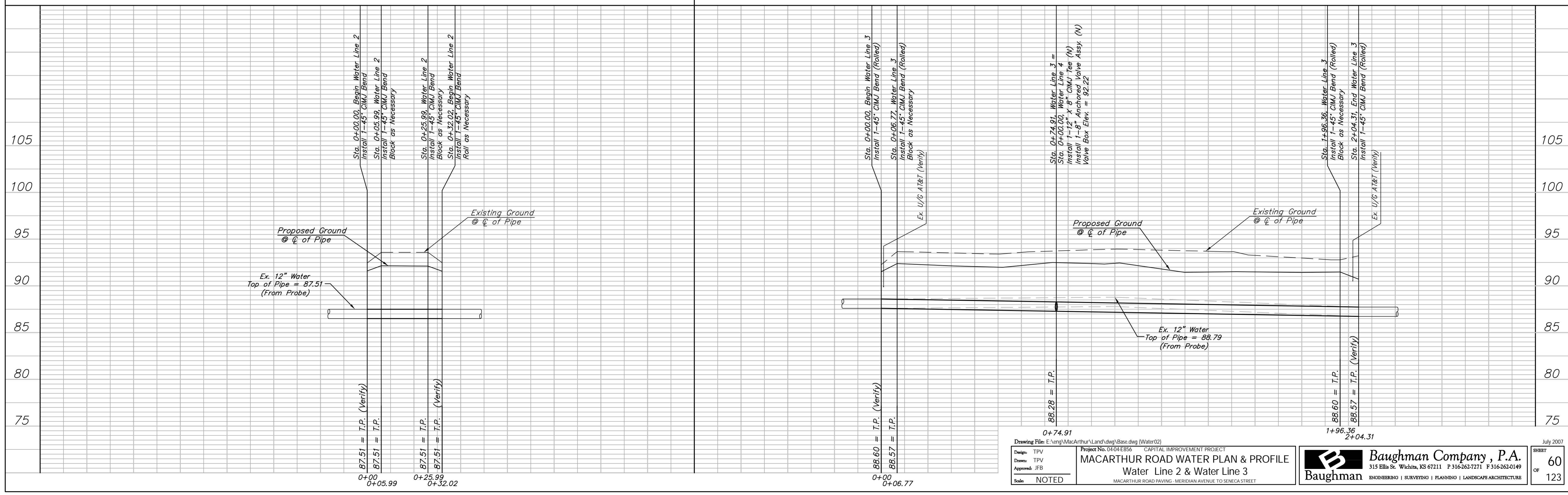
FHW A REGION NO.	STATE	PROJECT NO.	FISCAL YEAR	SHEET NO.	TOTAL SHEETS
7	KANSAS	87 N-0347-01	2007	60	123



Prior to Beginning Construction, the Contractor Shall Excavate the Ex. 12" Water Line to Verify Size and Location. The Contractor Shall Report Back the the Engineer So That Any Necessary Modifications Can Be Made. This Work Shall be Considered **SUBSIDIARY** to the Water Line Installation.

SCALE:
 HORIZONTAL: 1" = 20'
 VERTICAL: 1" = 5'

SCALE:
 HORIZONTAL: 1" = 20'
 VERTICAL: 1" = 5'



Drawing File: E:\eng\MacArthur\Land\dwg\Bases.dwg (Water02)
 Project No. 04-04-E856 CAPITAL IMPROVEMENT PROJECT
 Design: TPV
 Drawn: TPV
 Approved: JFB
 Scale: NOTED

MACARTHUR ROAD WATER PLAN & PROFILE
 Water Line 2 & Water Line 3
 MACARTHUR ROAD PAVING - MERIDIAN AVENUE TO SENECA STREET

Baughman Company, P.A.
 315 Ellis St. Wichita, KS 67211 P 316-262-7271 F 316-262-0149
 ENGINEERING | SURVEYING | PLANNING | LANDSCAPE ARCHITECTURE

July 2007
 SHEET 60 OF 123