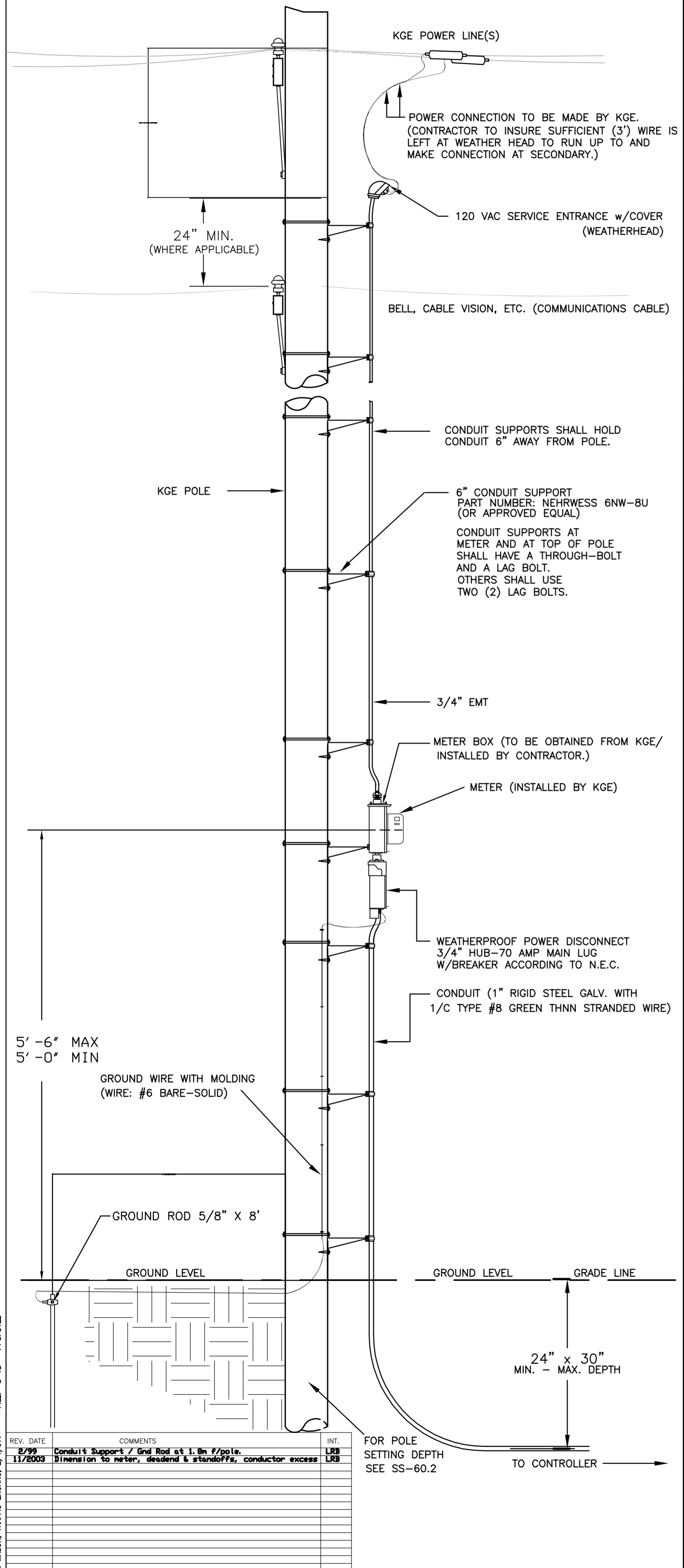
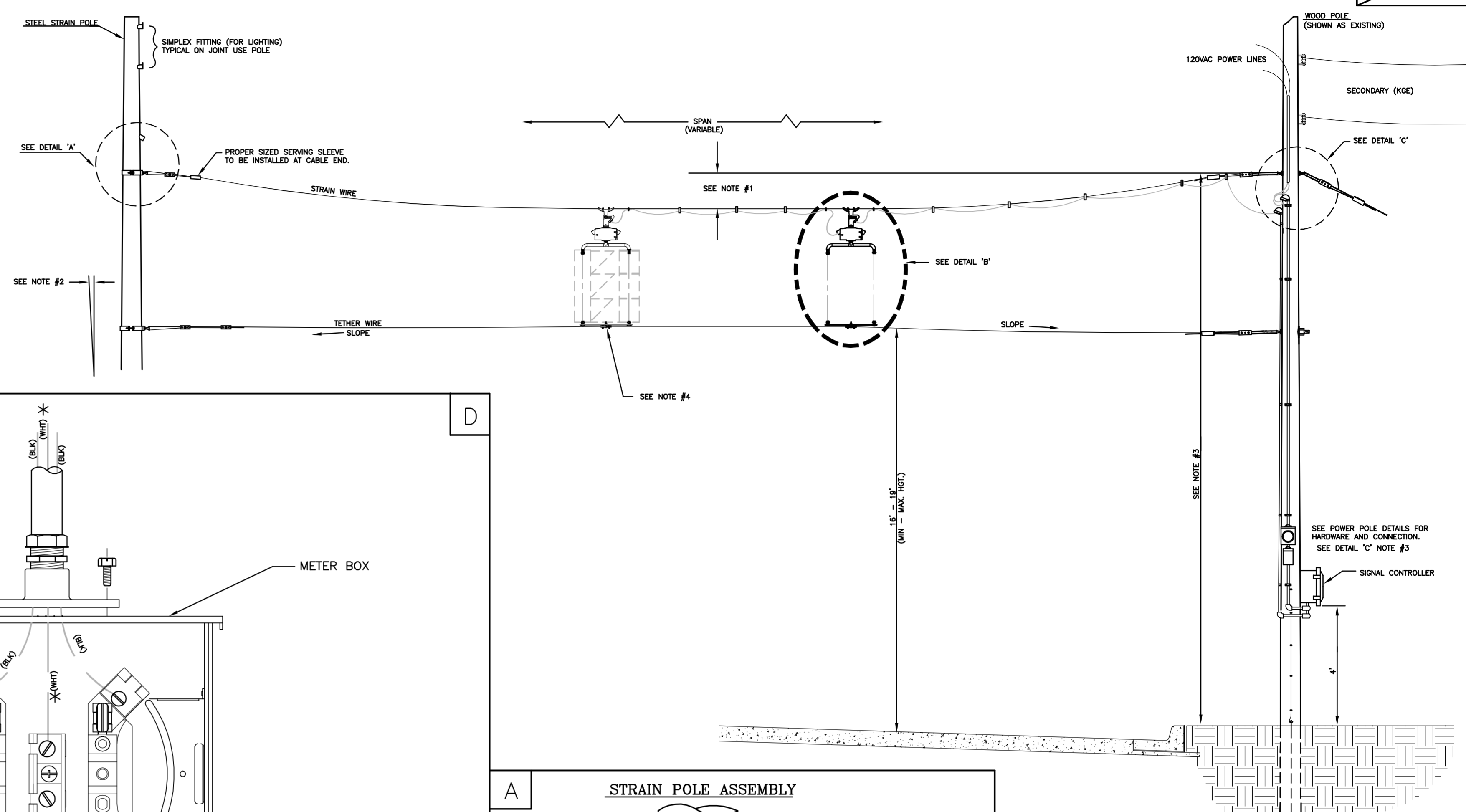


POWER POLE DETAILS



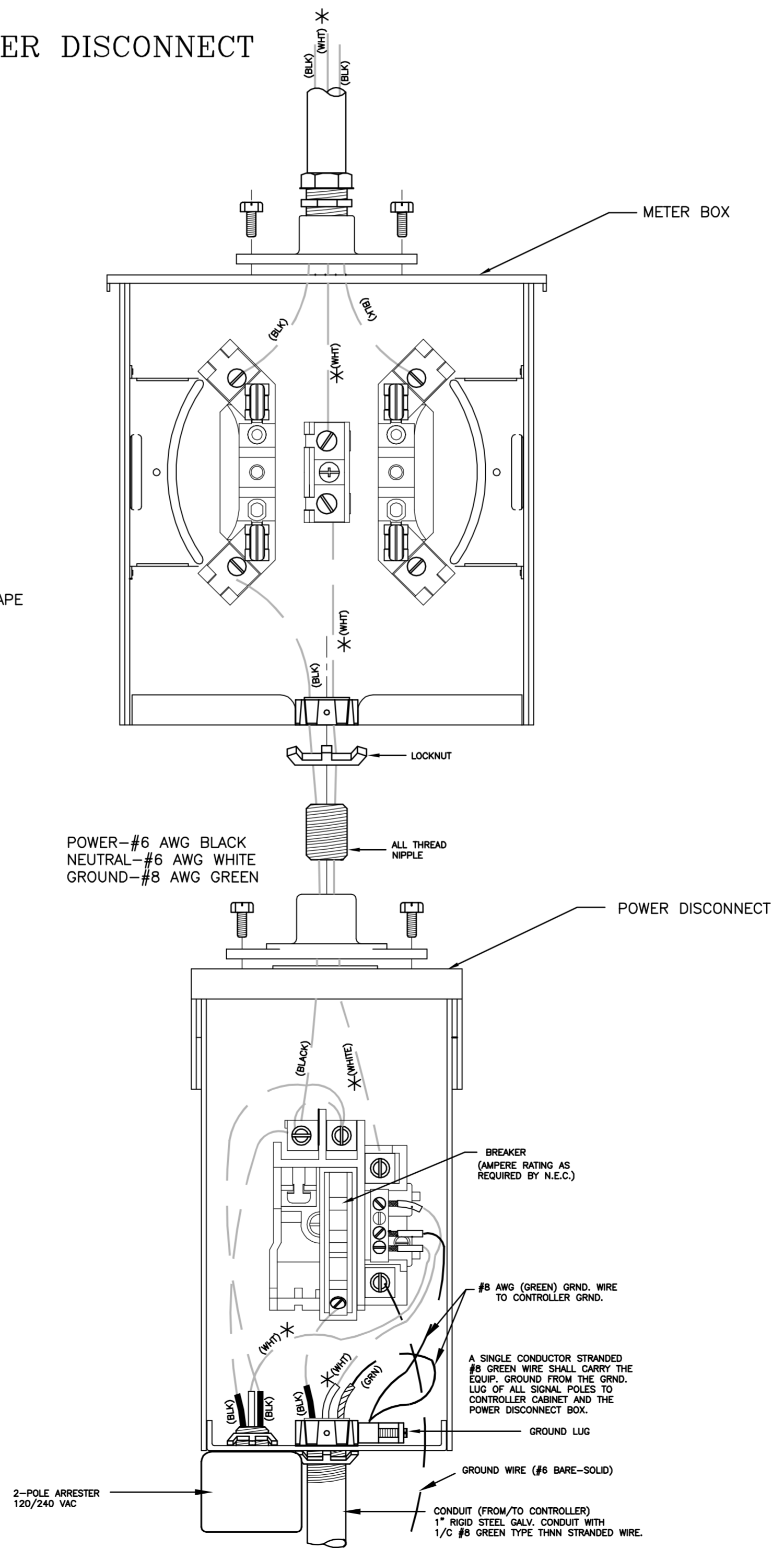
SPANWIRE ASSEMBLY DETAILS

1. MAX. SAG = 5% OF SPAN.
2. STANDARD BACKRAKE = 1.5'
3. HEIGHT OF STRAIN WIRE HOOK-UP TO BE DETERMINED BY FIELD ENGINEER. TRAFFIC SIGNAL CABLE TO BE SECURED TO STRAIN (SPAN) WIRE WEATHERABLE NYLON CABLE HANGERS (12" CTR.) DETAIL 'B'
4. TETHER CLAMP TO BE DESIGNED TO RELEASE UNDER 'HIGH WIND LOAD' TO PERMIT SIGNAL 'FREE SWING'.

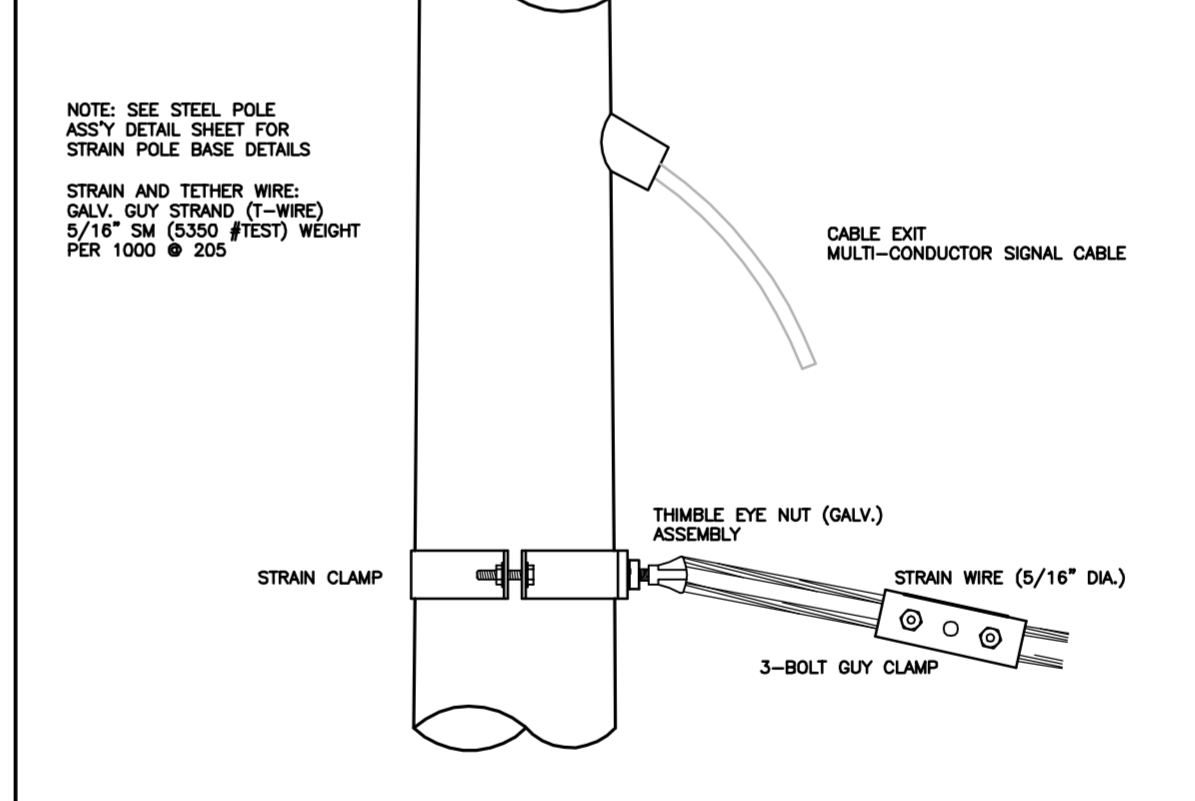


METER BOX & POWER DISCONNECT DETAILS

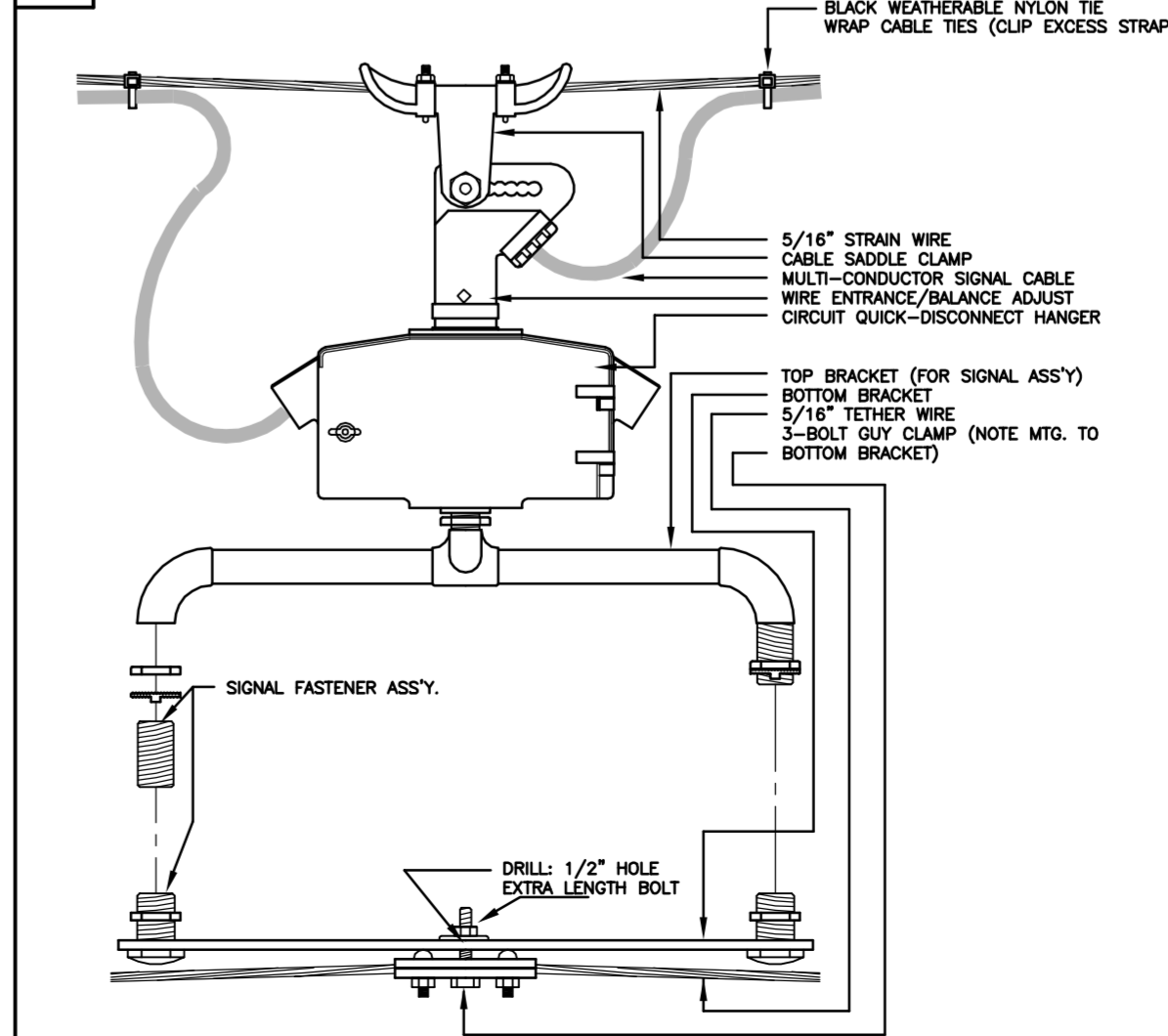
NOTE:
* TO BE MARKED WITH WHITE TAPE



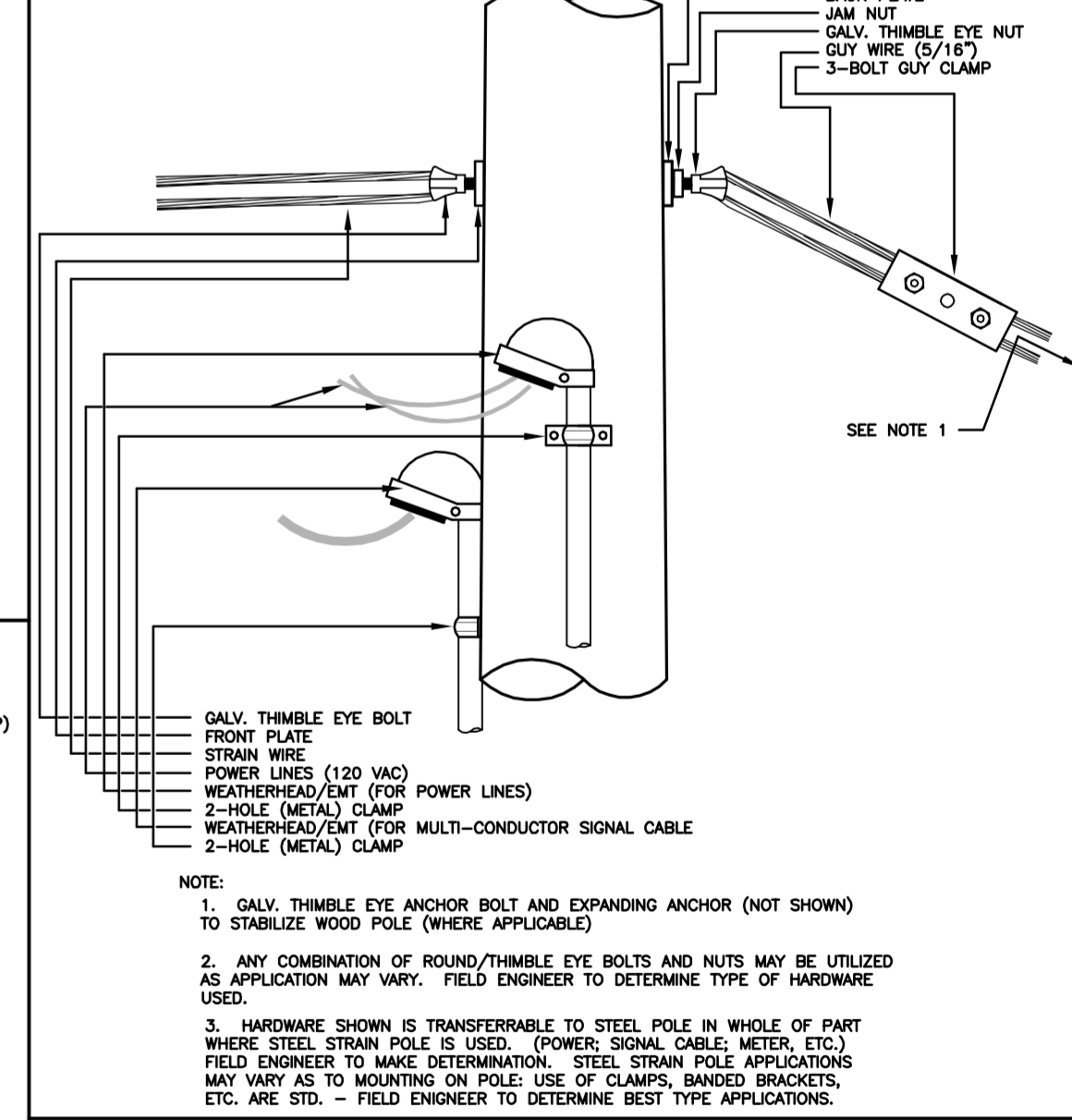
A STRAIN POLE ASSEMBLY



B SIGNAL BRACKET ASSEMBLY DETAILS



C WOOD POLE ASSEMBLY DETAILS KGE POLE EXCLUDED



MACARTHUR ROAD - MERIDIAN TO SENECA	
POWER POLE AND SPAN POLE ASSEMBLY DETAILS	
PROJECT NUMBER 472-84580	
DRAWN BY: T.M.	APPROVED BY: L. B.
DATE: FEB. 96	DATE: 2/26/99
CITY OF WICHITA DEPARTMENT OF PUBLIC WORKS	
DIVISION OF TRAFFIC ENGINEERING	RANDALL W. HOSKINS, P.E. TRAFFIC ENGINEER

T. MASON, TRAFFIC ENGINEERING, 2/4/97. FILE: D 18 - PPS0212

REV. DATE	COMMENTS	INT.
8/99	Conduit Support Z Rod at 1.8m f/pole.	LAB
11/2003	Dimension to meter, deadend & standards, conductor excess	LAB