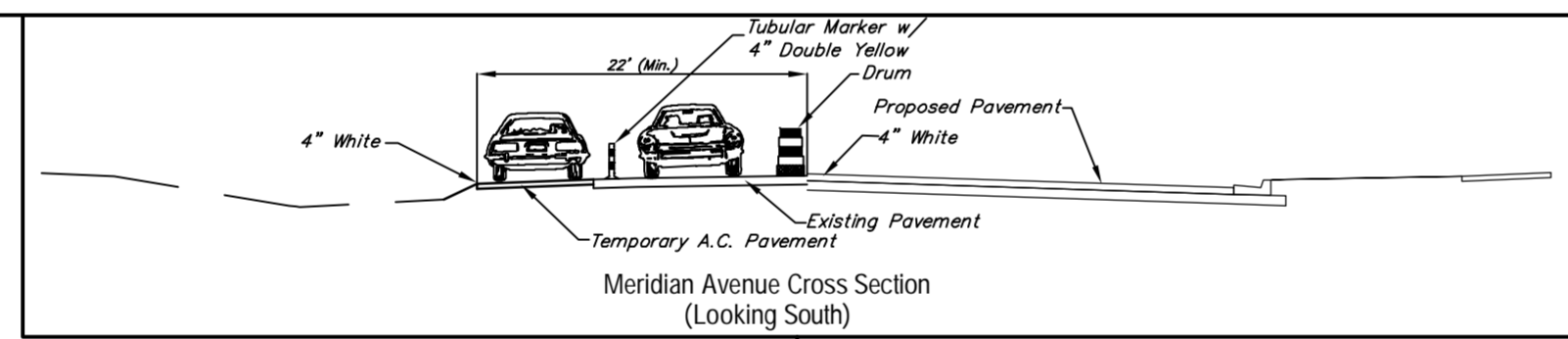
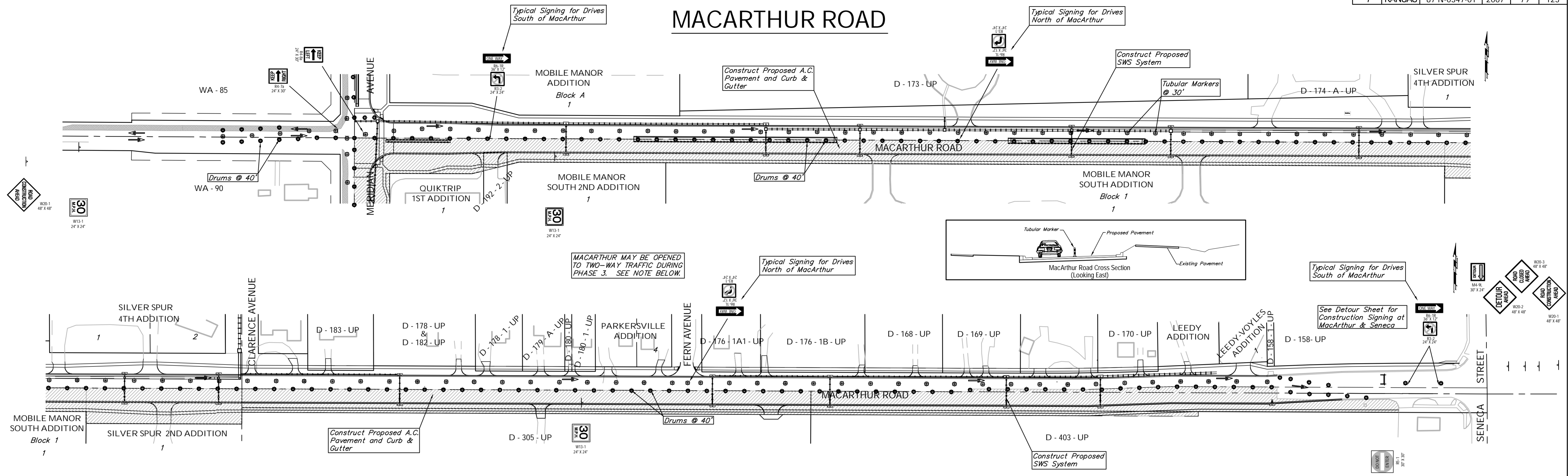
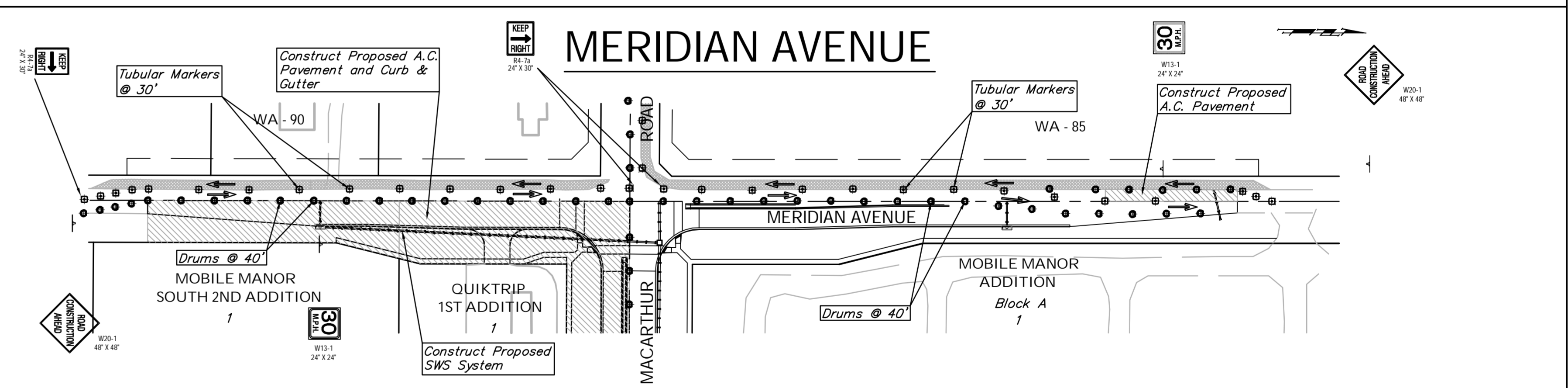


FHW A REGION NO.	STATE	PROJECT NO.	FISCAL YEAR	SHEET NO.	TOTAL SHEETS
7	KANSAS	87 N-0347-01	2007	79	123

MACARTHUR ROAD



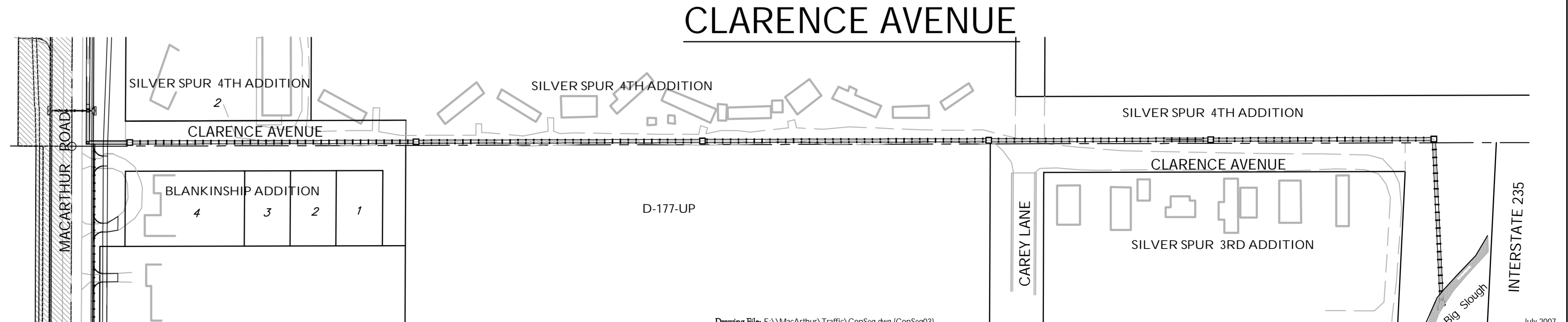
LEGEND	
	Work Area
	Temp. A.C. Pavement
	Reflectorized Drum (40' Spacing)
	Tubular Marker (30' Spacing)
	Type III Barricade
	Traffic Flow Pattern



PHASE 3

Move east bound traffic on MacArthur north to the new pavement and construct SWS and pavement on the south half of MacArthur between Meridian and Seneca. Construct SWS and pavement on the east half of Meridian south of MacArthur. Construct southeast quadrant of the MacArthur-Meridian intersection and a portion of Meridian North of MacArthur. Continue installation of Signal System. Traffic on MacArthur between Meridian and Seneca is to be east bound only on new pavement at the start of Phase 3, but opened to two-way traffic as soon as excavation near the center line is complete. Two-way traffic on Meridian is to be carried on both existing and temporary pavement.

PAVEMENT QUANTITIES FOR PHASE 3	
Temporary A.C. Pavement	0 S.Y.
FOR INFORMATION ONLY. Cost to be SUBSIDIARY to the Lump Sum Bid Item "Traffic Control (Construction)."	



Drawing File: E:\MacArthur\Traffic\ConSeq.dwg (ConSeq03)

Design: TPV
 Drawn: TPV
 Approved: TPV
 Scale: 1" = 100'

Project No. 04-04-E856 CAPITAL IMPROVEMENT PROJECT
MACARTHUR ROAD CONSTRUCTION
 SEQUENCING PLAN - PHASE 3
 MACARTHUR ROAD PAVING - MERIDIAN AVENUE TO SENECA STREET

Baughman Company, P.A.
 315 Ellis St. Wichita, KS 67211 P 316-262-7271 F 316-262-0149
 ENGINEERING | SURVEYING | PLANNING | LANDSCAPE ARCHITECTURE

July 2007
 SHEET 79 OF 123