

APPROVED
DESIGNED
QUANTITIES
TRACE CK.
DETAIL CK.
TRACE CK.

Project Length
 4700 L.F. = 0.90 MILES

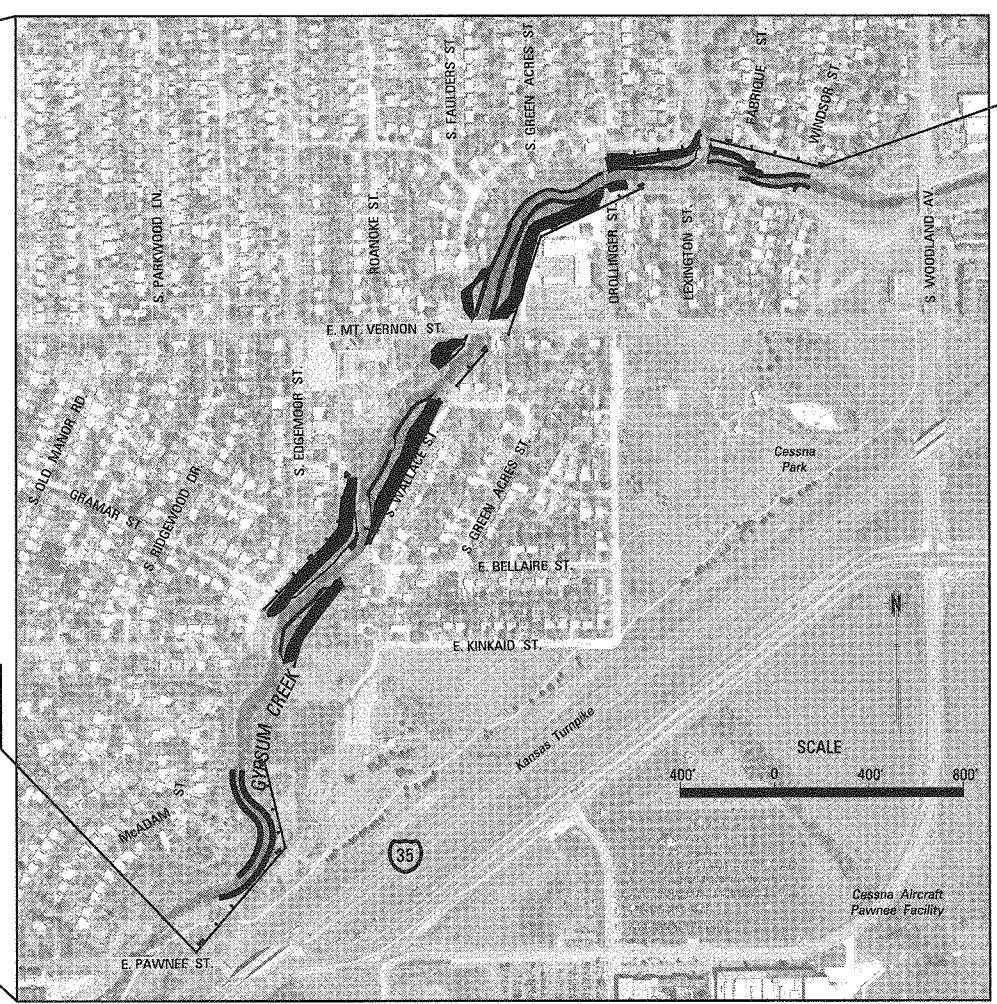
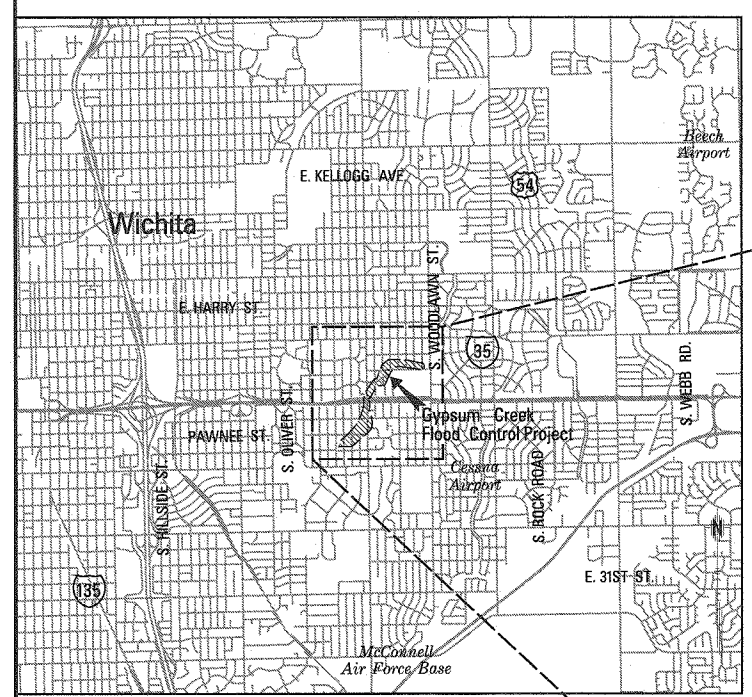
CITY OF WICHITA

GYPSUM CREEK FLOOD CONTROL

PAWNEE STREET TO WOODLAWN AVENUE

Project No. 468-84224/OCA No. 660804

VICINITY MAP



Begin Project
 Baseline "A"
 Sta. 1+00

End Project
 Baseline "H"
 Sta. 10+45



SHEET INDEX

- 1 Title Sheet
- 2 General Notes
- 3 Quantities
- 4 Project Layout/Survey Reference Plan
- 5-8 Typical Sections
- 9-12 Plan Sheets
- 13 Storm Sewer Pipe Profile
- 14 Curb Inlet Detail
- 15 Concrete Pavement Patching Details
- 16 Concrete Pipe End Section Details
- 17 Project Construction Sign Detail Sheet
- 18-20 Permanent Informational Sign Detail Sheets
- 21-24 Erosion Control/Seeding & Planting Plans
- 25 Landscaping Detail
- 26 Planting Detail
- 27 Erosion Control Details
- 28 Silt Fence, Ditch Check & Barrier Details
- 29-31 General Construction Details and Procedures
- 32-65 Cross-Sections

UTILITY LEGEND

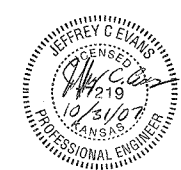
	Existing Sanitary Sewer
	Existing Water
	Existing Overhead Power
	Existing Underground Power
	Existing Fiber Optic

Note:
 The Information shown on this Drawing Concerning type and location of underground utilities is not guaranteed to be accurate or all inclusive. The contractor is responsible for contacting all utility companies for field location of all underground utility lines prior to any excavation and for making their own verification as to the type and location of underground utilities as may be necessary to avoid damage thereto.

PROJECT LOCATION
 SEDGWICK COUNTY, KANSAS
 T27S-R01E-S36

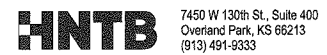
UTILITIES / CONTACTS

- | | | | | |
|---|---|--|---|--|
| Scott Lindebak
City-Storm Water Utility
455 N. Main, 8th Floor
Wichita, KS 67202
268-4545 | Bill Perkins
City-Water & Sewer
455 N. Main, 8th Floor
Wichita, KS 67202
268-4555 | James Coe
KS Gas Service
1021 E. 26th St. N.
Wichita, KS 67219
832-3121 | Shane Price
Westar
1900 E. Central, P.O. Box 208
Wichita, KS 67201
261-6315 | Carla Bell
Wichita Public Schools
432 W. 3rd St. N.
Wichita, KS 67203
973-4209 |
| Eva Moore
Cox Communications
801 E. Douglas
Wichita, KS 67202
260-7204 | Jim Toben
AT&T
154 N. Broadway, Rm. 210
Wichita, KS 67202
268-2245 | Joe Hoover
Wichita Public Schools
3850 N. Hydraulic
Wichita, KS 67219
973-2239 | | |



PREPARED & SUBMITTED BY:

 JEFFREY C. EVANS, P.E.
 10/31/07
 APPROVAL DATE



RECOMMENDED FOR APPROVAL

 JIM ARMOUR, P.E.
 APPROVAL DATE

 CITY ENGINEER
 CITY OF WICHITA, KANSAS

OCTOBER, 2007