

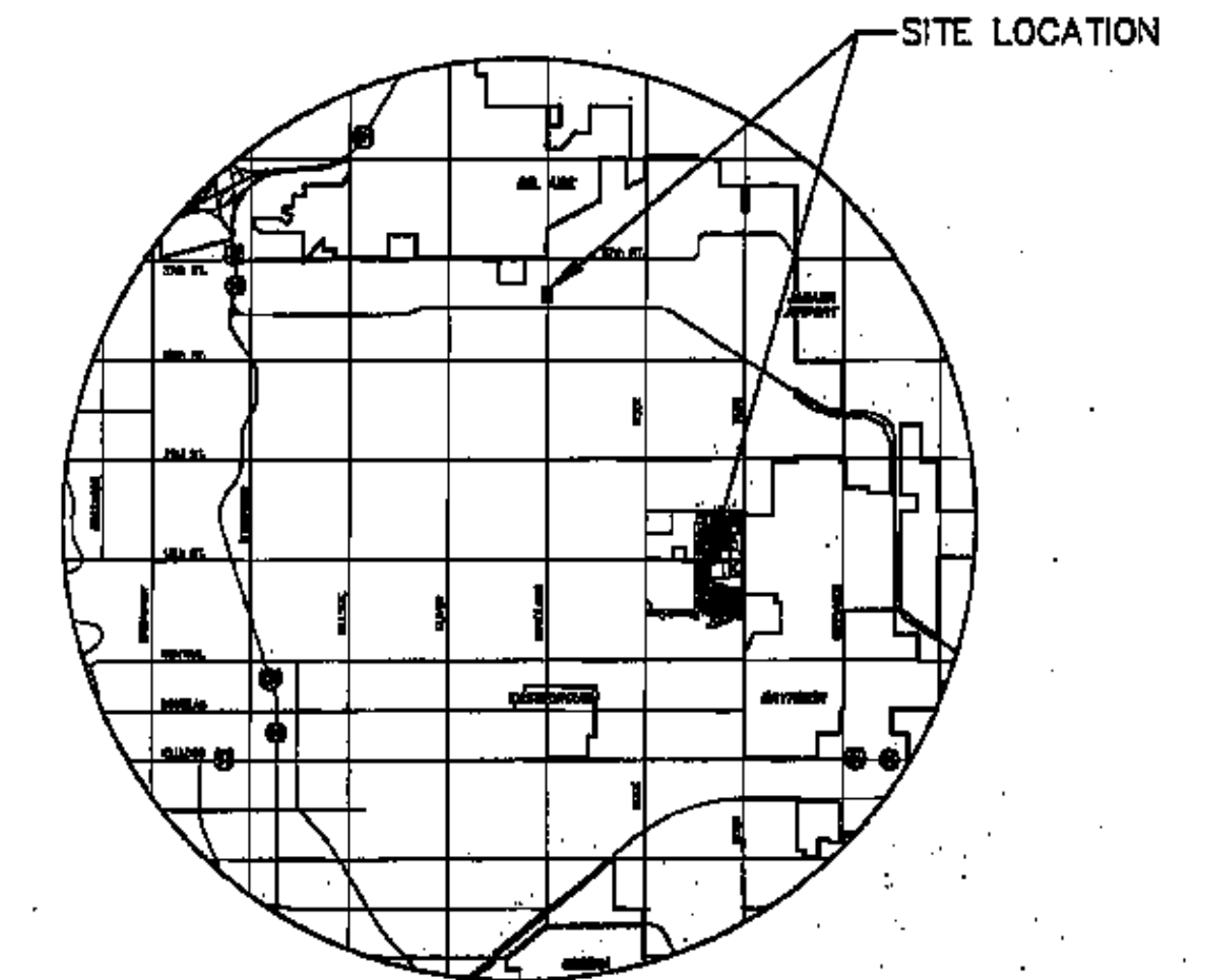
# TRAFFIC SIGNALIZATION AT WOODLAWN AVE. AND 34TH STREET

CITY OF WICHITA

PROJECT NO. 472-84424

JIM ARMOUR, P.E. - CITY ENGINEER

OCA # 706956



LOCATION MAP

## GENERAL NOTES

CONTRACTOR WILL BE REQUIRED TO PROVIDE A MINIMUM ADVANCE NOTICE OF SEVENTY-TWO (72) HOURS TO UTILITY COMPANIES PRIOR TO STARTING ANY EXCAVATION AS FOLLOWS:  
KANSAS ONE-CALL 1-800-344-7233  
OR 687-2470 (LOCAL WICHITA)

THE CONTRACTOR MUST NOTIFY THE FOLLOWING IN CASE OF AN EMERGENCY:

AT&T (TELEPHONE)	800-870-8390
COX COMMUNICATIONS (CABLE)	262-0661
WESTAR (ELECTRIC)	383-8800
KANSAS GAS SERVICE (GAS)	832-3101
CITY OF WICHITA WATER & SEWER MAINT.	262-6000
AQUILA (GAS)	946-0086

THE CONTRACTOR SHALL BE RESPONSIBLE FOR PRESERVING PROPERTY IRONS. THE CONTRACTOR WILL BE REQUIRED TO REESTABLISH ANY PROPERTY IRONS WHICH ARE DAMAGED OR DESTROYED BY HIS CONSTRUCTION OPERATIONS. SUCH IRONS SHALL BE REESTABLISHED BY A LICENSED LAND SURVEYOR IN ACCORDANCE WITH STATE LAWS.

EXISTING UTILITIES AND THEIR LOCATIONS, AS SHOWN ON THE PLANS REPRESENT THE BEST INFORMATION OBTAINABLE FOR DESIGN. LOCATION INFORMATION HAS BEEN OBTAINED FROM THE VARIOUS UTILITY COMPANIES AND IS EITHER FROM COMPANY RECORD DRAWINGS OR COMPANY PROVIDED FIELD LOCATIONS. THE PLAN LOCATIONS SHOWN ARE NOT GUARANTEED. ADDITIONAL EXISTING UTILITIES MAY ALSO BE ENCOUNTERED.

RUBBLE FROM THE REMOVAL OF MISCELLANEOUS STRUCTURES AND EXCESS EXCAVATION WHICH IS TO BE WASTED SHALL BE DISPOSED OF ON SITES TO BE PROVIDED BY THE CONTRACTOR. THESE SITES SHALL BE APPROVED BY THE ENGINEER AS TO SUITABILITY, APPEARANCE AND SITE LOCATION. LOCATIONS THAT, IN THE OPINION OF THE ENGINEER, WILL LEAVE AN UNSIGHTLY APPEARANCE WILL NOT BE APPROVED. ALL DISPOSAL SITES MUST BE APPROVED BY THE KANSAS DEPARTMENT OF HEALTH AND ENVIRONMENT. MATERIAL EITHER STOCKPILED OR DISPOSED OF IN A FLOOD PLAIN WOULD REQUIRE A KANSAS STATE BOARD OF AGRICULTURE PERMIT. ANY MATERIAL DUMPED IN WATERS OF THE UNITED STATES OR WETLANDS IS SUBJECT TO U.S. CORPS OF ENGINEERS PERMITTING REGULATIONS. ANY MATERIAL BURIED OR STOCKPILED BEYOND APPROVED CONSTRUCTION LIMITS WOULD REQUIRE ADDITIONAL ARCHAEOLOGICAL INVESTIGATIONS UNLESS BURIED IN A PREVIOUSLY APPROVED BORROW LOCATION.

CONTRACTOR SHALL RESEED AND MULCH ALL DISTURBED AREAS. COST SHALL BE CONSIDERED SUBSIDIARY TO TRAFFIC SIGNAL INSTALLATION.

CONTRACTOR SHALL BE RESPONSIBLE FOR THE COORDINATION ASSOCIATED WITH RELOCATION AND REMOVAL OF ALL UTILITIES. ARRANGEMENTS SHALL BE MADE WITH UTILITY COMPANIES FOR RELOCATES.

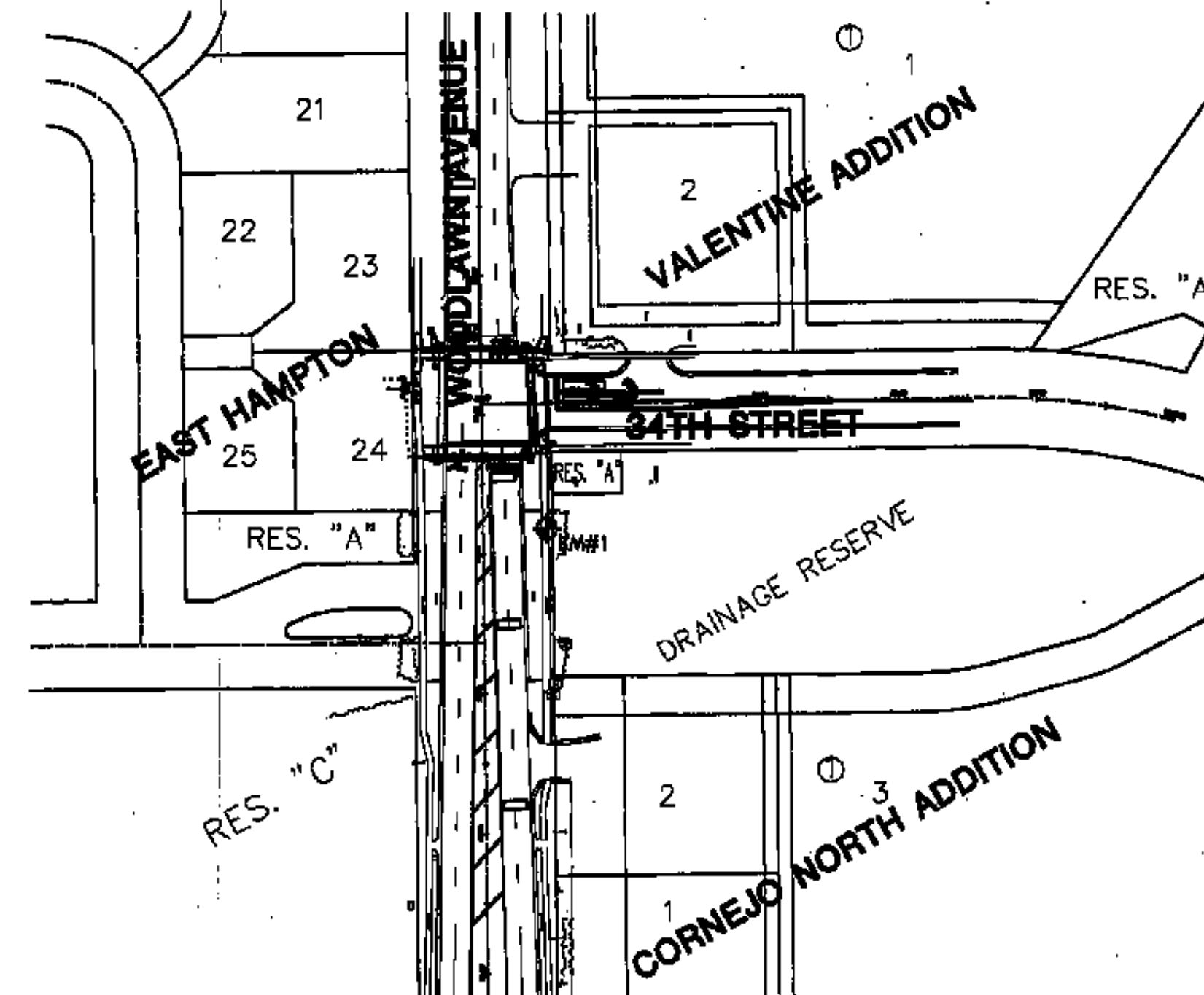
ALL ADJACENT STRUCTURES, SIDEWALKS, PARKING LOTS, DRIVES, STREETS, UTILITIES AND APPURTENANCE OTHER THAN SHOWN FOR REMOVAL AND/OR REPLACEMENT SHALL BE PROTECTED FROM DAMAGE DURING CONSTRUCTION OF THE PROJECT. DAMAGED ITEMS SHALL BE REMOVED AND REPLACED BY CONTRACTOR AT NO COST TO THE OWNER. FENCING, SHEETING AND SHORING MAY BE REQUIRED TO PROTECT THE ITEMS MENTIONED ABOVE.

WHEELCHAIR RAMPS AND SIDEWALK REPLACEMENT SHALL BE SUBSIDIARY TO TRAFFIC SIGNAL INSTALLATION.

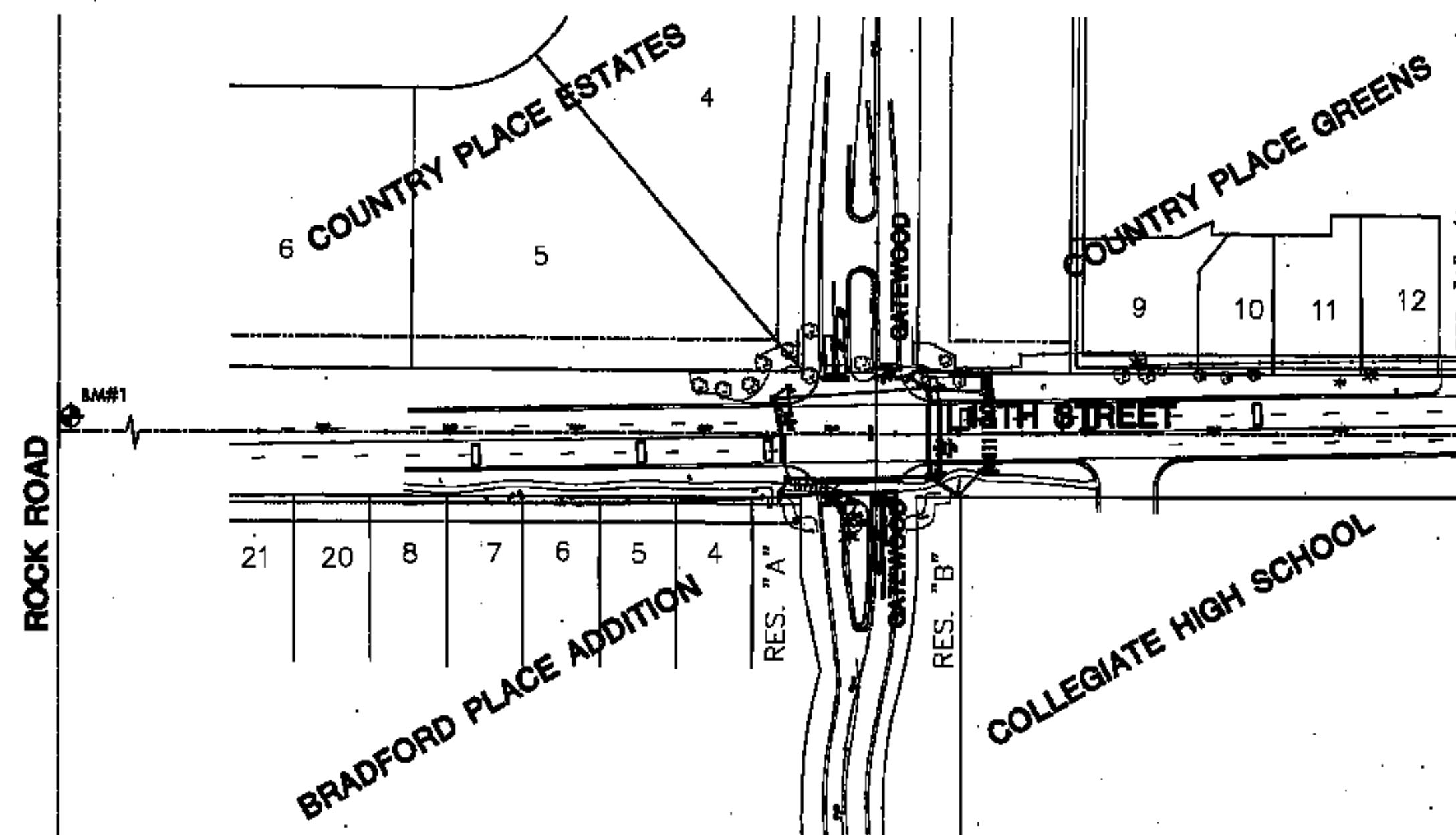
TRAFFIC CONTROL SHALL BE SUBSIDIARY TO TRAFFIC SIGNAL INSTALLATION.

CONTRACTOR SHALL REMOVE EXISTING STOP SIGNS ONCE SIGNAL IS PUT INTO OPERATION.

ACCESS SHALL BE MAINTAINED TO ALL ADJACENT PROPERTIES THROUGHOUT CONSTRUCTION AT LOCATIONS THAT HAVE DIRECT ACCESS TO 13TH STREET OR WOODLAWN.



# 13TH STREET AND GATEWOOD



## INDEX TO DRAWINGS

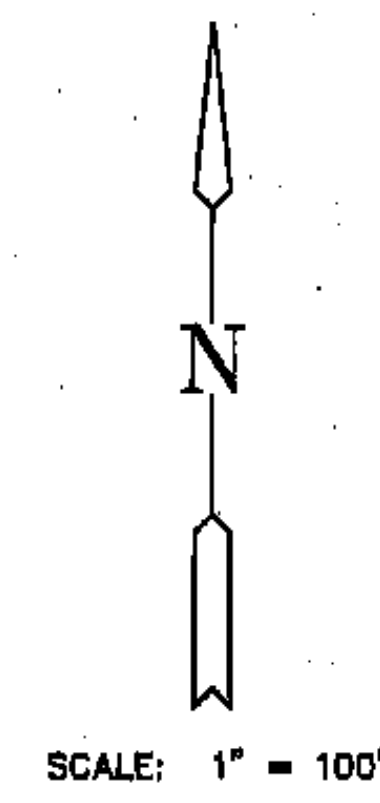
SHEET NO.	DESCRIPTION
1	TITLE SHEET
2-3	TRAFFIC SIGNAL PLANS - WOODLAWN & 34TH ST. N.
4-5	TRAFFIC SIGNAL PLANS - 13TH ST. N. & GATEWOOD
6-8	TRAFFIC SIGNAL DETAILS
9-10	TRAFFIC SIGNAL SPECIFICATIONS
11	WHEELCHAIR RAMP DETAILS
12-13	PAVEMENT MARKING PLAN
14-17	TRAFFIC CONTROL
18-19	BMP DETAILS

## WOODLAWN & 34TH BENCHMARKS

BM #1 C.O.W. DISC NE COR HANDRAIL ON RCBC OVER WOODLAWN (34TH & WOODLAWN) MSL ELEV. 1365.37 C.O.W. 177.97

## 13TH & GATEWOOD BENCHMARKS

BM #1 C.O.W. DISC NE CORNER OF ROCK RD. AND 13TH ST. INTERSECTION ON TRAFFIC SIGNAL POLE, - SEE CITY BM  
BM #2 BM "□" T.C. WEST END MEDIAN SOUTH SIDE OF 13TH & GATEWOOD ST.



C:\Civ\07174\dwg\prop\07174egt.dwg 11/18/2007 10:14:13 AM

**WOODLAWN & 34TH ST.  
13TH & GATEWOOD TRAFFIC SIGNALIZATION**  
PROJECT NAME

**MKEC ENGINEERING CONSULTANTS**  
411 N. WEBB ROAD  
WICHITA, KS. 67206  
318 - 884 - 9800

**TITLE SHEET**  
SHEET TITLE

JTC DESIGN BY.	JWC DRAWN BY.	GJA CHECKED BY.
MAY 2007 DATE	07174 JOB NO.	1 / 19 SHEET/01