

BILL OF MATERIALS (for Information Only)		
ITEM	UNIT	QUANTITY
Traffic Signal Pole Steel w/Mastarm (Std)	Each	3
Traffic Signal Pedestal Pole Aluminum (10')	Each	1
Concrete Controller Pad	Each	1
Concrete Footing - Pole	Each	3
Concrete Footing - Pedestal Pole	Each	1
Service Box - 36 In. Dia.	Each	4
Ground Rod & Clamp	Each	5
Conduit Clamp	Each	As Needed
Pedestrian Signal Lamp L.E.D. (12" Combination)	Each	6
L.E.D. Unit	Each	18
Back Plate For Signal Head (Type A)	Each	6
Entrance Head	Each	1
Circuit Breaker & Box	Each	1
Traffic Signal Head - 12" (Type A) w/Mounting Bracket	Each	6
Pedestrian Signal - 12" (Type K) w/Mounting Bracket	Each	6
Pedestrian Pushbutton w/Sign	Each	6
Pad Mounted Cabinet & Controller System-Type 2070 (See Note)	Each	1
Lead-In Wire No. 6 Awg 1/c (Type THHN)	Lin. Ft.	81
Multi-Conductor Cable No. 14 Awg 2/c	Lin. Ft.	22
Multi-Conductor Cable No. 14 Awg 5/c	Lin. Ft.	398
Multi-Conductor Cable No. 14 Awg 7/c	Lin. Ft.	696
Standard No. 8 Awg 1/c (Type THHN)(Ground)	Lin. Ft.	644
Rigid Galvanized Conduit 1"	Lin. Ft.	39
Rigid Galvanized Conduit 2"	Lin. Ft.	80
Rigid Galvanized Conduit 3"	Lin. Ft.	317
Video Detection Camera And Mounting Hardware (Riser Brackets)	Each	3
Video Detection Processor Unit (Iteris Vantage Or Apr'vd Equal)	Each	1
Video Power Cable No. 16 Awg 3/c	Lin. Ft.	253
Video Cable 75 ohm Coaxial (Belden #8281)	Lin. Ft.	253
Tv Monitor	Each	1
Video System Programming Unit	Each	1
Street Name Signs	Each	3

EQUIPMENT SPECIFICATIONS 2070 CONTROLLER

A. Controller Units: The 2070L controllers supplied shall meet the requirements outlined in CalTrans TEES 2002 (latest revision), and the following requirements:

- The 2070L controllers shall have a 19" EIA rack mountable chassis (mated to the 170 cabinet). Controllers shall be EAGLE or ECONOLITE.
- 2070-1B CPU module with RJ-45 Ethernet port.
- 2070-2A C1 field I/O module for compatibility with CalTrans style C1 connector.
- 2070-3B 8X40 front panel with LCD display.
- 2070-4A 10 amp power supply.
- 2070-7A asynchronous serial communications module (RS-232).
- Any unused slot position shall have a cover plate.

B. Conflict monitors:

The Conflict Monitors supplied shall be 2010 ECL conflict monitors.

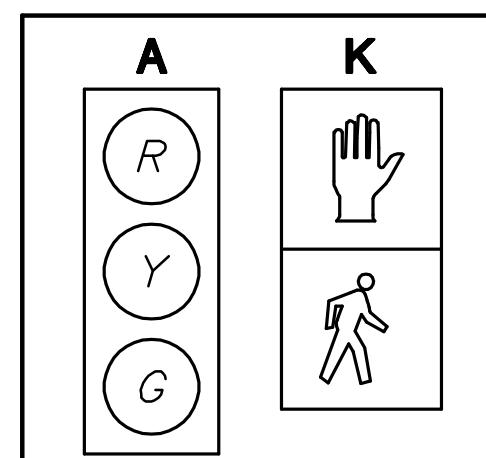
C. 1-Loop-back cable for 2070-2A Field I/O (Type 170, 104 pin and 37 pin connector).

D. 1-Loop-back cable for 2070-7A port.

Note: The contractor shall supply and install all necessary material and equipment for the complete installation and operation of the Traffic Signal whether specifically mentioned or not.

TRAFFIC SIGNAL HEAD SUMMARY				
SIGNAL NO.	TYPE	SIZE	MOUNTING BRACKET	QUANTITY
1, 2, 3	A	3-12"	TYPE I	6
4a, 4b	K	2-12"	TYPE II	2
5a, 5b	K	2-12"	TYPE II	2
6a, 6b	K	2-12"	TYPE II	2

ALL SIGNAL HEADS TO BE L.E.D.



SIGNAL FACE ARRANGEMENT

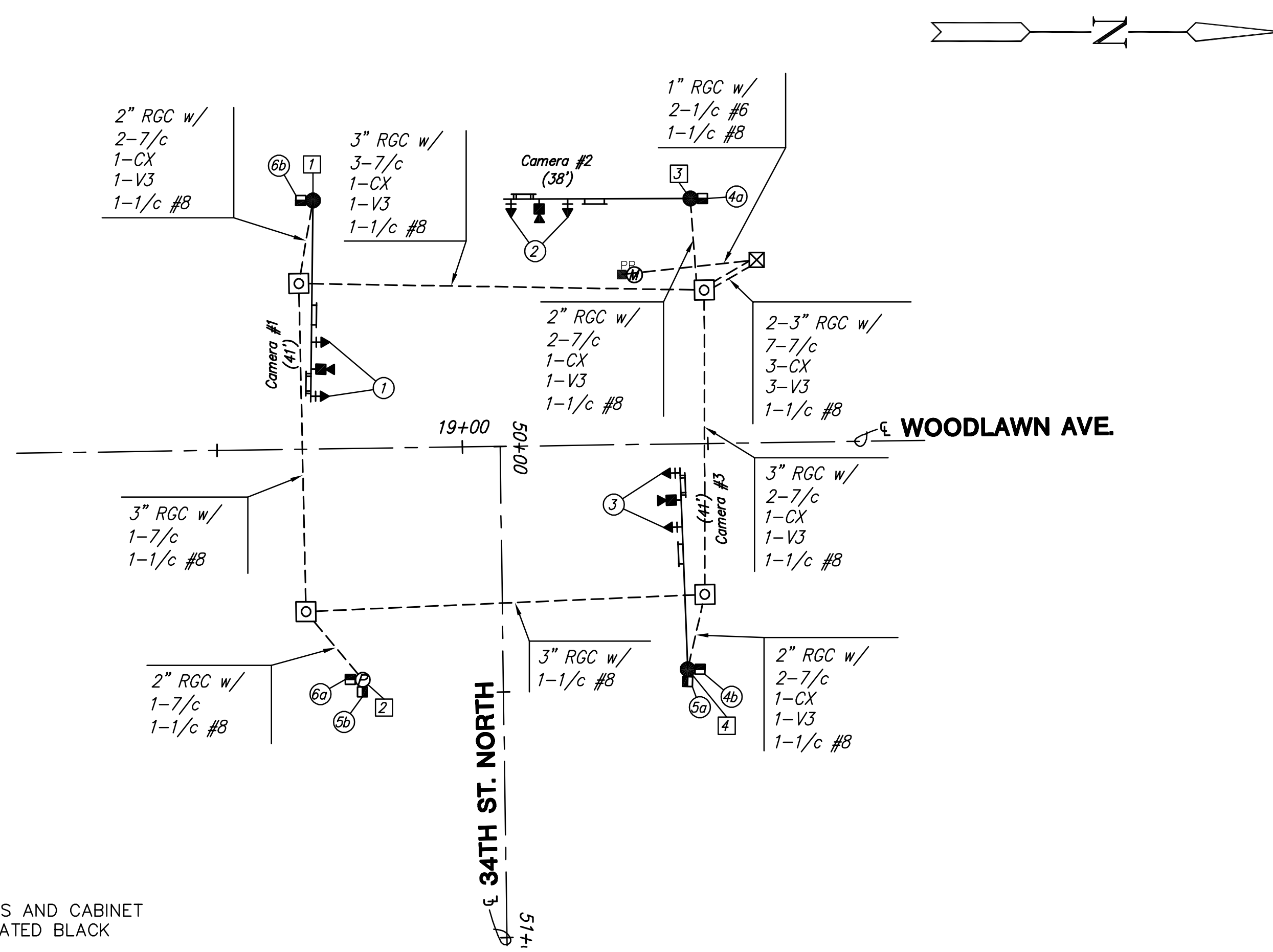
All lenses in each head shall be L.E.D. unit per note.

TRAFFIC SIGNAL POLE SUMMARY								
POLE NO.	STATION	TYPE	ARM LENGTH	SIGNALS ON ARM	X1	X2	OTHER EQUIP. ON ARM	SIGNALS ON POLE
1	18+70.4, Lt.	B	41'	2-E	11'	-	1-G, 1-H, 1-I	1-F
2	18+79.2, Rt.	C	-	-	-	-	-	2-F
3	19+47.3, Lt.	B	38'	2-E	11.5'	-	1-G, 1-H, 1-I	1-F
4	19+45.4, Rt.	B	41'	2-E	11'	-	1-G, 1-H, 1-I	2-F

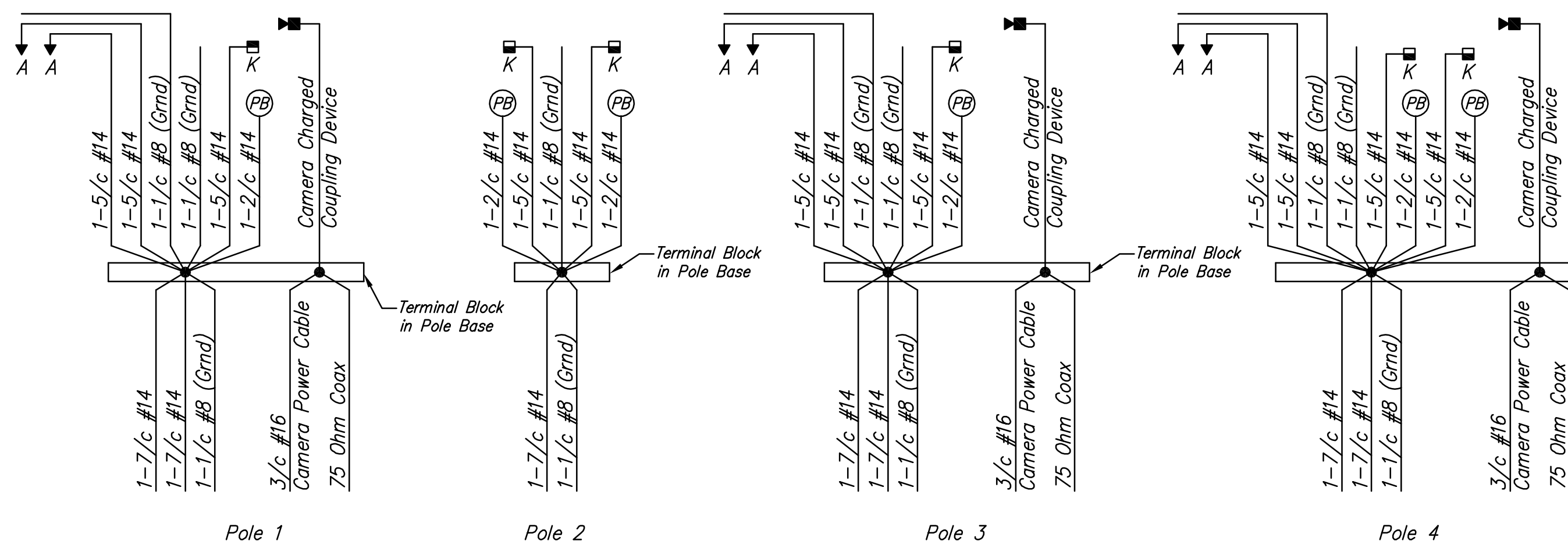
- A Joint Use Steel Pole With Mast Arm
- B Standard Steel Pole With Mast Arm
- C Pedestal Pole (10' Aluminum)
- D Left Turn Sign
- E Traffic Signal
- F Pedestrian Signal With Push Button
- G Street Name Sign
- H Video Detection Camera
- I Wind Damper

STREET NAME SIGN SUMMARY	
LEGEND	QUANTITY
Woodlawn	1
34th St	2
TOTAL	3

Letters shall be series "E Modified".



*ALL POLES, MASTARMS AND CABINET SHALL BE POWDER COATED BLACK



RECAPITULATION OF TRAFFIC SIGNAL QUANTITIES

BID ITEM	QUANTITY	UNIT
TRAFFIC SIGNAL INSTALLATION (WOODLAWN & 34TH ST.)	1	L.S.
PAVEMENT MARKING	1	L.S.

J:\Civil\07174\dwg\prop\07174wr1.dwg 11/16/2007 9:57:22 AM

WOODLAWN & 34TH ST. 13TH & GATEWOOD TRAFFIC SIGNALIZATION
PROJECT NAME

WOODLAWN & 34TH ST. TRAFFIC SIGNAL WIRING PLAN
SHEET TITLE

MKEC ENGINEERING CONSULTANTS
411 N. WEBB ROAD
WICHITA, KS. 67206
316-684-9600

DESIGN BY: JTC | DRAWN BY: JWC | CHECKED BY: GJA
DATE: MAY 2007 | JOB NO.: 07174 | SHEET/OF: 3 / 19