

FINAL PLAT

SHADY RIDGE ADDITION

AN ADDITION TO WICHITA, SEDGWICK COUNTY, KANSAS

We, MKEC Engineering Consultants, Inc., a Registered Corporate Land Surveyor in Kansas, do hereby certify that we have been in responsible charge of surveying and plating of "SHADY RIDGE ADDITION" an addition to Wichita, Sedgwick County, Kansas, into Lots, a Block, and Streets, the same being accurately set forth in the accompanying plat and described herein:

A replat of a portion of land lying in "Woodland Heights, 2nd Addition", an addition to Wichita, Kansas;
 A replat of all of Lot 2, said addition, EXCEPT; West 260 feet thereof;
 A replat of Lots 3 and 4, of said addition.

All reserves, streets, utility easements, building setbacks, access control, together with, a Drainage Easement recorded Film 198, Page 170; together with, a Utility Easement recorded Film 2332, Page 247, together with any and all established public rights-of-way within the above described property are hereby vacated and replated by virtue of K.S.A. 12-512(b).

I hereby certify that the details of this plat are correct to the best of my knowledge and belief this ____ day of _____, 2004.

Gregory J. Allison, PE, LS #1257
 MKEC Engineering Consultants, Inc.
 411 North Webb Road
 Wichita, Kansas 67206

Know all men by these presents that we the undersigned property owners of the land above set forth in the Registered Land Surveyor's Certificate, have caused the same to be surveyed and platted into Lots, a Block, and Streets the same to be known as "SHADY RIDGE ADDITION", an addition to Wichita, Sedgwick County, Kansas. Easements for the construction and maintenance of public utilities and drainage, as indicated on the accompanying plat are hereby granted to the public. Streets are hereby dedicated to and for the public. A drainage plan has been developed for this plat and all drainage easements, right-of-way, or reserves shall remain at established grades or as modified with the approval of the applicable City or County Engineer, and unobstructed to allow for the conveyance of storm water. This subdivision is in part of the Northwest Quarter, Section 22, Township 27 South, Range 1 West, of the Sixth Principal Meridian. Lots 6, 7, 17, 18, 19, 20, 21, 31, 32, 33, 34, 35, and 36, are required to adhere to the minimum pad elevation as shown on the "Minimum Pad Elevations" table.

MINIMUM PAD ELEVATIONS (LOWEST OPENINGS)		
LOT	ELEVATION (CITY DATUM)	ELEVATION (NGVD)
6	141.0	1328.4
7	140.0	1327.4
17	139.0	1326.4
18	139.0	1326.4
19	136.5	1323.9
20	136.0	1323.4
21	135.0	1322.4
31	130.0	1317.4
32	129.0	1316.4
33	128.5	1315.9
34	128.0	1315.4
35	127.5	1314.9
36	127.5	1314.9

THE CREW, A KANSAS GENERAL PARTNERSHIP

Roger W. Evans, Partner _____ Partner
 Tom Warner, Partner _____ Partner
 Bruce Riddle, Partner _____ Partner

STATE OF KANSAS, SEDGWICK COUNTY} ss:

This instrument was acknowledged before me on ____ day of _____, 2004, by Roger W. Evans, Tom Warner, and Bruce Riddle, Partners, The Crew, a Kansas General Partnership.

IN WITNESS WHEREOF, I have hereunto set my hand and affixed my official seal, the day and year last above written.

My Term Expires: _____ Notary Public: _____, Notary Public

We Prairie State Bank, holders of a mortgage on the above described property, do hereby consent to the plat of "SHADY RIDGE ADDITION."

PRAIRIE STATE BANK

Carmen Campbell _____, Senior Vice President

This instrument was acknowledged before me on ____ day of _____, 2004, by Carmen Campbell, Senior Vice President, Prairie State Bank.

IN WITNESS WHEREOF, I have hereunto set my hand and affixed my official seal, the day and year last above written.

My Term Expires: _____ Notary Public: _____, Notary Public

This plat of "SHADY RIDGE ADDITION" has been submitted to and approved by the Wichita-Sedgwick County Metropolitan Area Planning Commission, Wichita, Kansas.

Dated this ____ day of _____, 2004

WICHITA-SEDGWICK COUNTY METROPOLITAN PLANNING COMMISSION

Ronald L. Wernell, Chair _____, Secretary
 John L. Schlegel, Secretary _____, Secretary

At the direction of the City Council.

Carlos Mayans, Mayor _____, Mayor
 Karen Schofield, City Clerk _____, City Clerk

Entered on transfer record this ____ day of _____, 2004

Don Brace, County Clerk _____, County Clerk

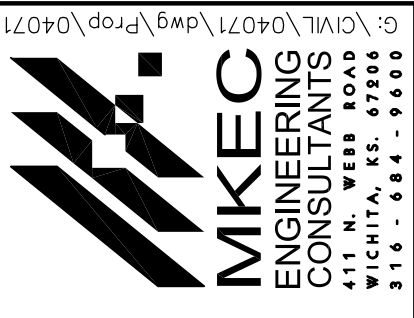
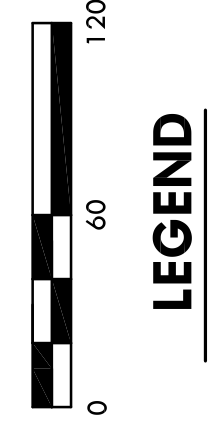
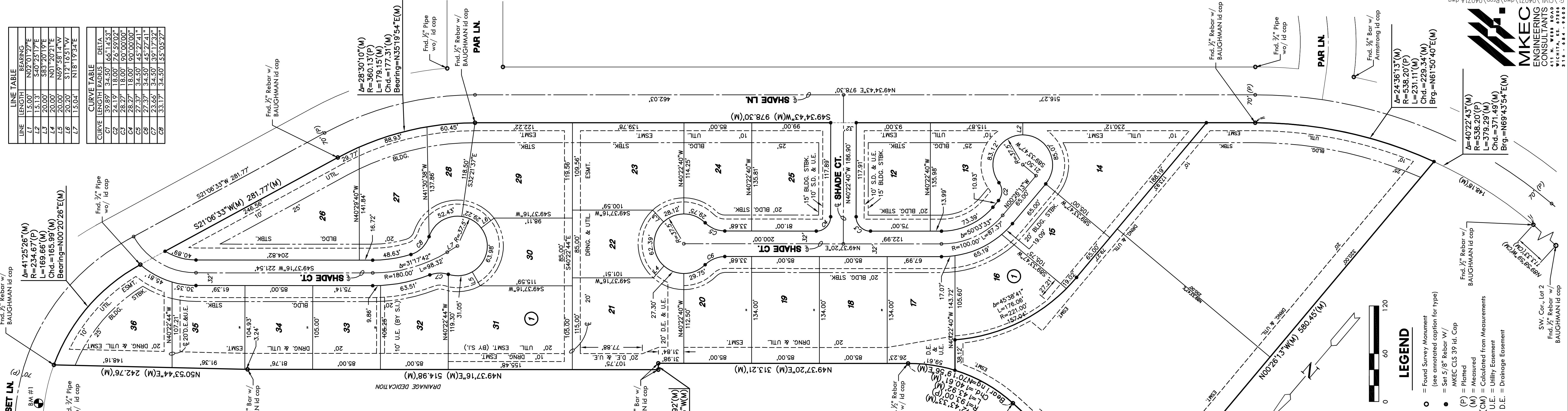
STATE OF KANSAS, SEDGWICK COUNTY} ss:

This is to certify that this instrument was filed for record in the Register of Deeds office this ____ day of _____, 2004, at ____ o'clock ____ M; and is duly recorded.

Bill Meek, Register of Deeds _____, Register of Deeds
 Linda Kizzire, Deputy _____, Deputy

Reviewed in accordance with K.S.A. 58-2005 on this ____ day of _____, 2004.

Tricia L. Robello, LS #1246 _____, Deputy County Surveyor
 Deputy County Surveyor
 Sedgwick County, Kansas



G:\CIVIL\040714\mg\Fcp\040714.dwg