

BENCHMARKS:
 BM #1: BENT 60d NAIL IN LIGHT POLE, 55' SSW OF THE E1/4 COR., SEC. 13, TWP. 26-S, R-1-W.
 ELEV. = 1336.54 NGVD29

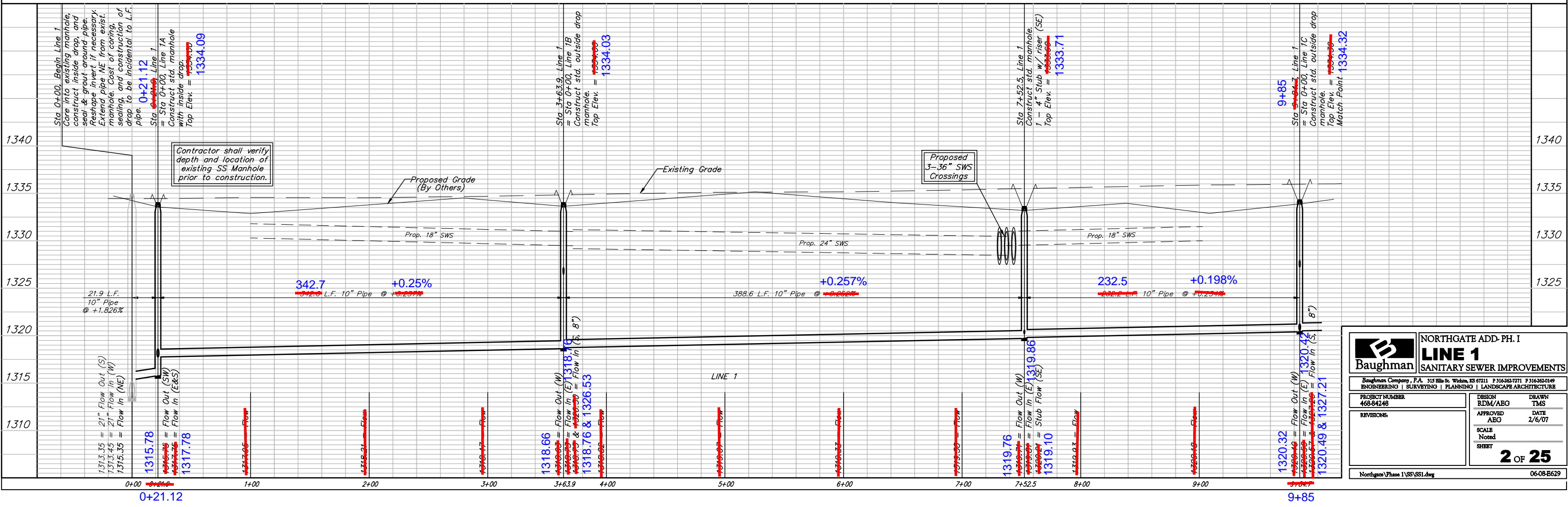
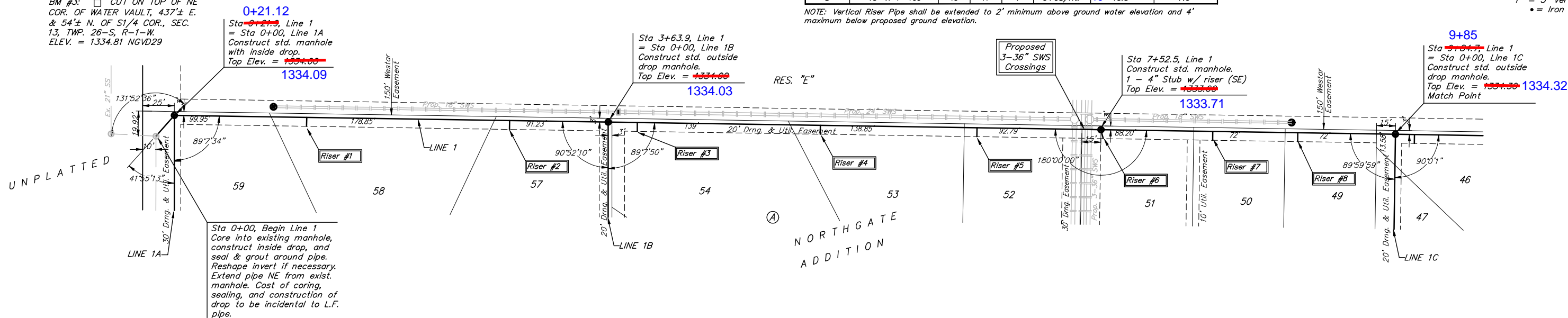
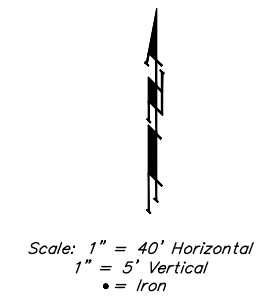
BM #2: RAILROAD SPIKE IN E. FACE OF N. "H" POLE, 60± S. OF N. LINE, S1/2, NE1/4, SEC. 13, TWP. 26-S, R-1-W.
 ELEV. = 1335.93 NGVD29

BM #3: "□" CUT ON TOP OF NE COR. OF WATER VAULT, 437± E. & 54± N. OF S1/4 COR., SEC. 13, TWP. 26-S, R-1-W.
 ELEV. = 1334.81 NGVD29

SEWER SERVICE TABLE

NUMBER	TYPE	LOCATION				FOR INFORMATION ONLY		
		LOT NO.	BLOCK NO.	LINE NO.	STATION \ DIRECTION	APPROXIMATE LENGTH 4" PIPE	VERTICAL	HORIZONTAL
1	10" X 4" Tee	58	A	1	1+00/Rt.	28.6	11.0'	7.0'
2	10" X 4" Tee	57	A	1	2+00/Rt.	89	12.0'	7.0'
3	10" X 4" Tee	54	A	1	3+00/Rt.	90	12.0'	7.0'
4	10" X 4" Tee	53	A	1	5+00/Rt.	31	13.0'	7.0'
5	10" X 4" Tee	52	A	1	6+00/Rt.	53	11.5'	7.0'
6	4" Stub	51	A	1	7+00/Rt.	52	10.5'	7.0'
7	10" X 4" Tee	50	A	1	8+00/Rt.	40	11.0'	7.0'
8	10" X 4" Tee	49	A	1	9+00/Rt.	10	10.5'	7.0'

NOTE: Vertical Riser Pipe shall be extended to 2' minimum above ground water elevation and 4' maximum below proposed ground elevation.



Baughman NORTHGATE ADD. PH. I
LINE 1
 SANITARY SEWER IMPROVEMENTS

PROJECT NUMBER: 468-84248
 DESIGN: RDM/ABG
 DRAWN: TMS
 APPROVED: ABG
 DATE: 2/6/07

SCALE: Noted
 SHEET: 2 OF 25

Northgate Phase 1\SS\SS1.dwg 06-08-B629