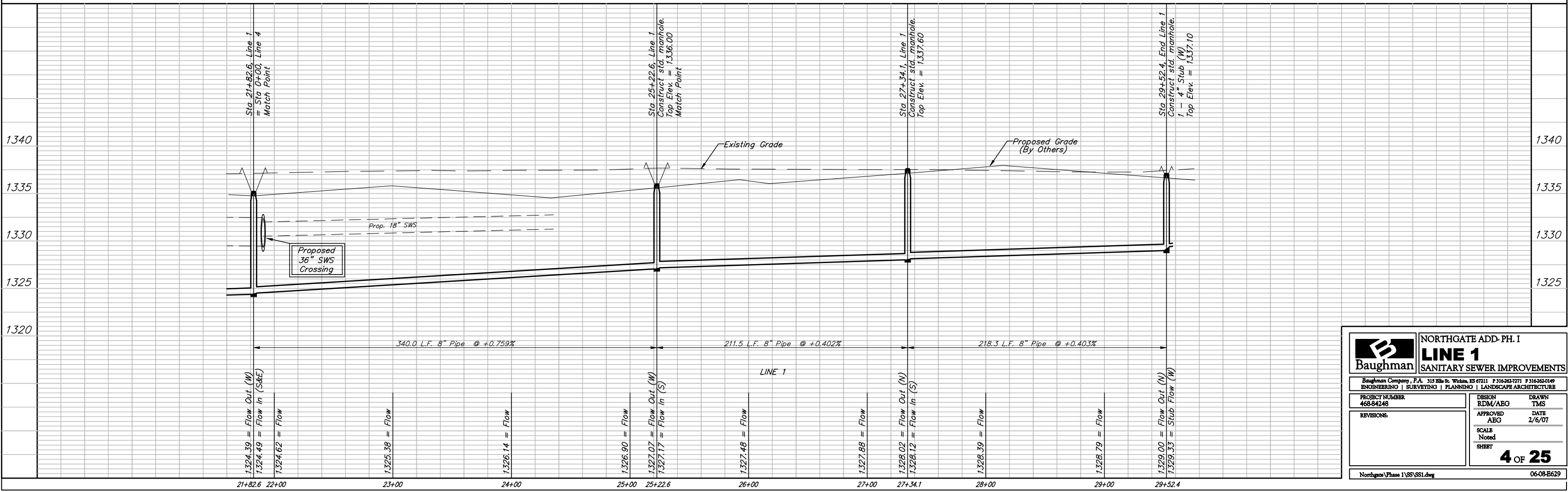
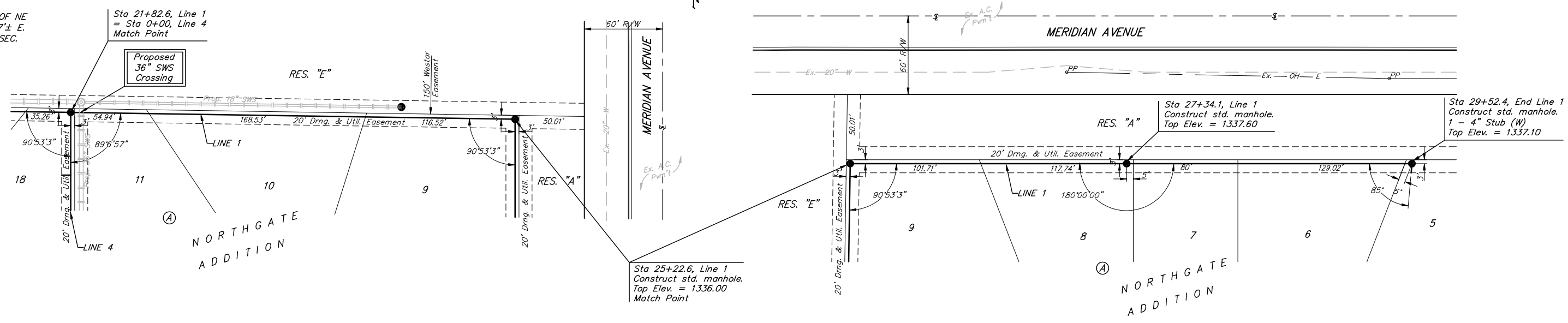


BENCHMARKS:
 BM #1: BENT 60d NAIL IN LIGHT POLE, 55' SSW. OF THE E1/4 COR., SEC. 13, TWP. 26-S, R-1-W.
 ELEV. = 1336.54 NGVD29

BM #2: RAILROAD SPIKE IN E. FACE OF N. "H" POLE, 60'± S. OF N. LINE, S1/2, NE1/4, SEC. 13, TWP. 26-S, R-1-W.
 ELEV. = 1335.93 NGVD29

BM #3: "□" CUT ON TOP OF NE COR. OF WATER VAULT, 437'± E. & 54'± N. OF S1/4 COR., SEC. 13, TWP. 26-S, R-1-W.
 ELEV. = 1334.81 NGVD29

Scale: 1" = 40' Horizontal
 1" = 5' Vertical
 • = Iron



Baughman		NORTHGATE ADD. PH. I	
		LINE 1	
		SANITARY SEWER IMPROVEMENTS	
Baughman Company, P.A. 315 Ellis St. Wichita, KS 67211 P 316-262-7771 F 316-262-0149			
ENGINEERING SURVEYING PLANNING LANDSCAPE ARCHITECTURE			
PROJECT NUMBER 468-84248	DESIGN RDM/ABG	DRAWN TMS	DATE 2/6/07
REVISIONS	APPROVED ABG	SCALE Noted	SHEET
			4 OF 25
Northgate Phase 1\SS\SS1.dwg			06-08-B629