

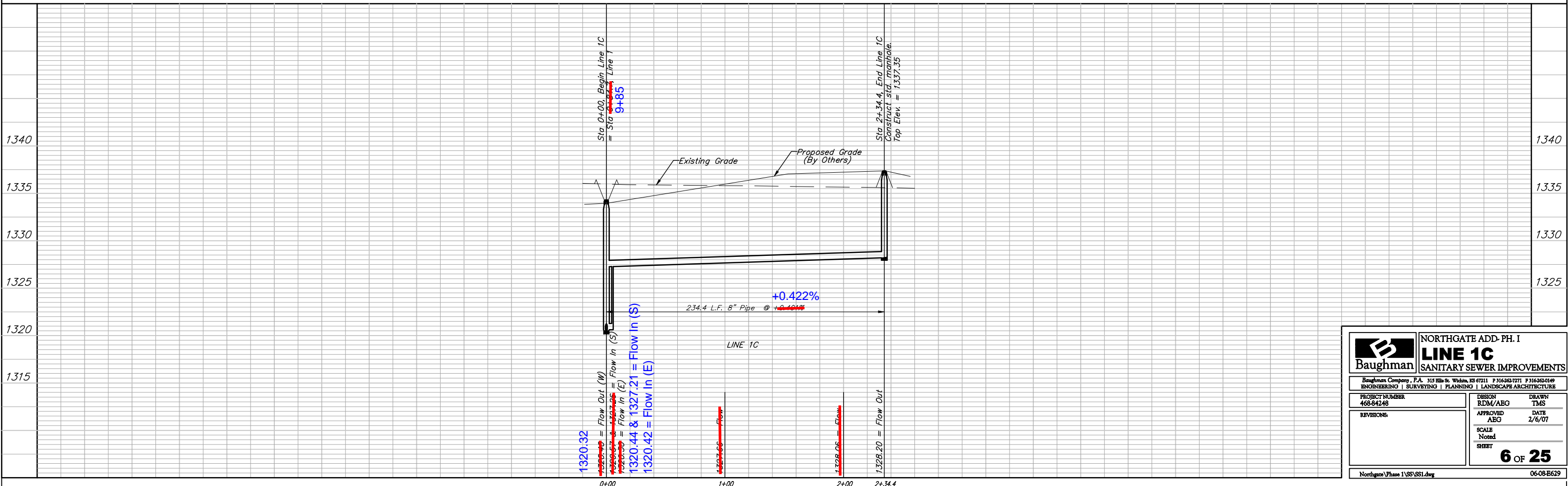
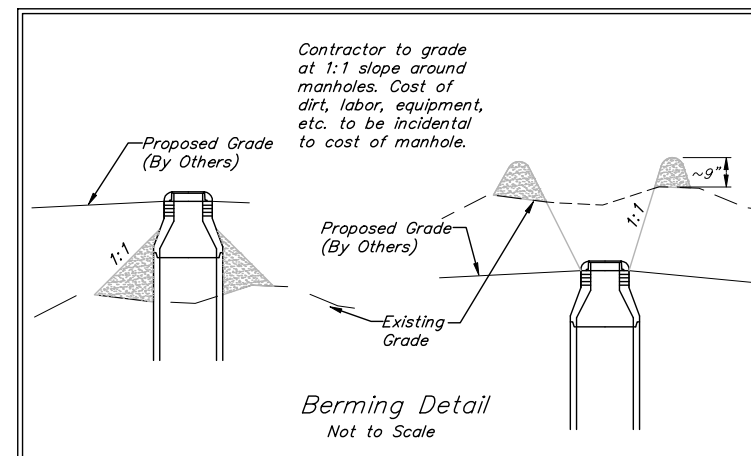
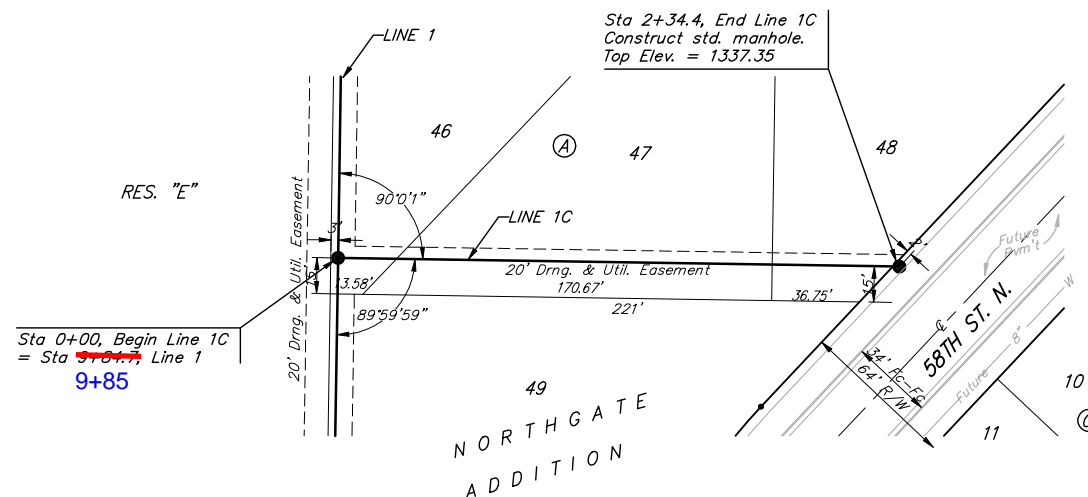
**BENCHMARKS:**  
 BM #1: BENT 60d NAIL IN LIGHT POLE, 55' SSW. OF THE E1/4 COR., SEC. 13, TWP. 26-S, R-1-W.  
 ELEV. = 1336.54 NGVD29

BM #2: RAILROAD SPIKE IN E. FACE OF N. "H" POLE, 60± S. OF N. LINE, S1/2, NE1/4, SEC. 13, TWP. 26-S, R-1-W.  
 ELEV. = 1335.93 NGVD29

BM #3: "□" CUT ON TOP OF NE COR. OF WATER VAULT, 437± E. & 54± N. OF S1/4 COR., SEC. 13, TWP. 26-S, R-1-W.  
 ELEV. = 1334.81 NGVD29



Scale: 1" = 40' Horizontal  
 1" = 5' Vertical  
 • = Iron



		<b>NORTHGATE ADD- PH. I</b> <b>LINE 1C</b> <b>SANITARY SEWER IMPROVEMENTS</b>	
		<small>Baughman Company, P.A. 315 Ellis St. Wichita, KS 67211 P 316-262-7771 F 316-262-0149        ENGINEERING   SURVEYING   PLANNING   LANDSCAPE ARCHITECTURE</small>	
PROJECT NUMBER 468-84248	DESIGN RDM/ABG	DRAWN TMS	DATE 2/6/07
REVISIONS	APPROVED ABG	SCALE Noted	SHEET <b>6 OF 25</b>
<small>Northgate Phase 1\SS\SS1.dwg</small>		<small>06-08-E629</small>	