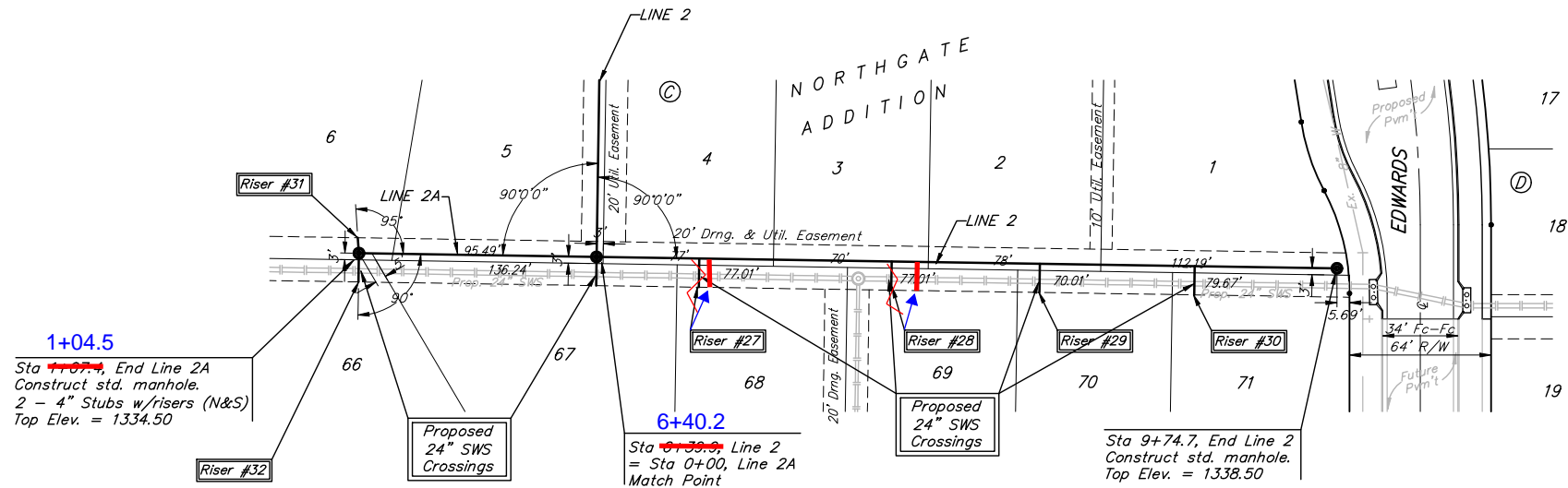
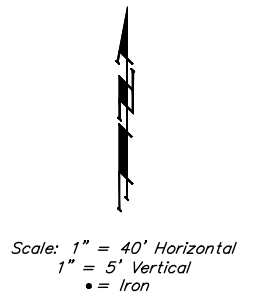


BENCHMARKS:
 BM #1: BENT 60d NAIL IN LIGHT POLE, 55' SSW OF THE E1/4 COR., SEC. 13, TWP. 26-S, R-1-W.
 ELEV. = 1336.54 NGVD29

BM #2: RAILROAD SPIKE IN E. FACE OF N. "H" POLE, 60± S. OF N. LINE, S1/2, NE1/4, SEC. 13, TWP. 26-S, R-1-W.
 ELEV. = 1335.93 NGVD29

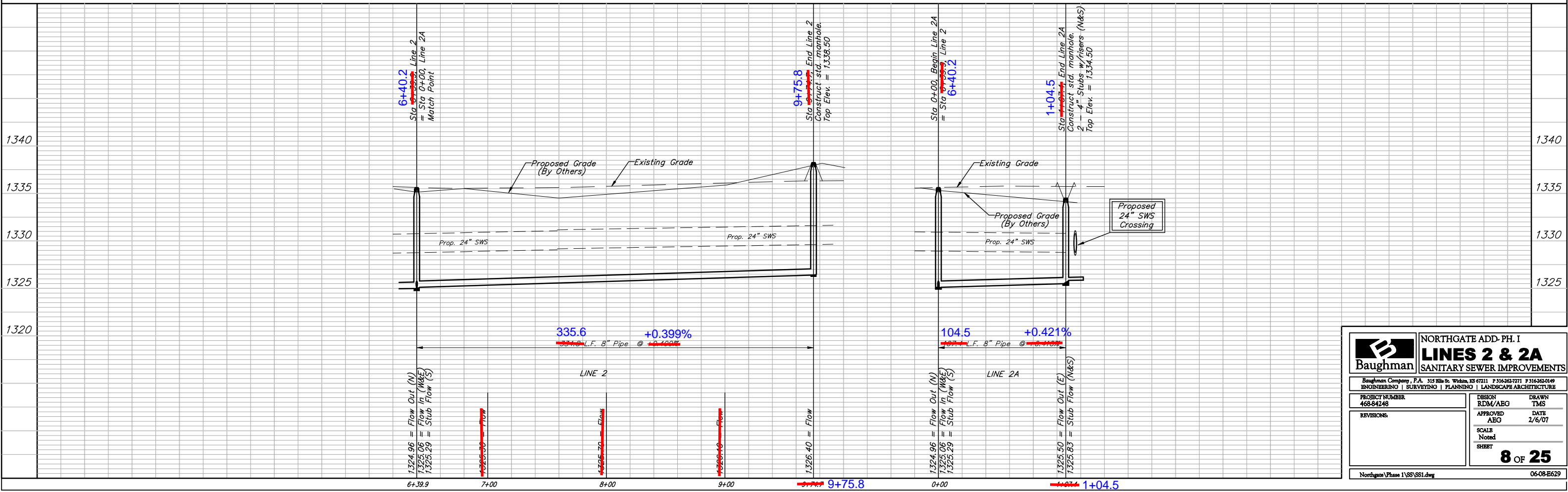
BM #3: "□" CUT ON TOP OF NE COR. OF WATER VAULT, 437± E. & 54± N. OF S1/4 COR., SEC. 13, TWP. 26-S, R-1-W.
 ELEV. = 1334.81 NGVD29



SEWER SERVICE TABLE

NUMBER	TYPE	LOCATION				FOR INFORMATION ONLY		
		LOT NO.	BLOCK NO.	LINE NO.	STATION\ DIRECTION	APPROXIMATE LENGTH 4" PIPE		
						VERTICAL	HORIZONTAL	
27	8" X 4" Tee	68	C	2	6+87/Rt.	88.2	6.0'	13.0'
28	8" X 4" Tee	69	C	2	7+74/Rt.	85.2	5.0'	13.0'
29	8" X 4" Tee	70	C	2	8+41/Rt.	42.2	5.5'	13.0'
30	8" X 4" Tee	71	C	2	9+11/Rt.	11.2	6.0'	13.0'
31	4" Stub	6	C	2A	1+07.4/Rt.	04.5	7.0'	7.0'
32	4" Stub	66	C	2A	1+07.4/Rt.	04.5	7.0'	13.0'

NOTE: Vertical Riser Pipe shall be extended to 2' minimum above ground water elevation and 4' maximum below proposed ground elevation.



Baughman NORTHGATE ADD-PH. I
LINES 2 & 2A
 SANITARY SEWER IMPROVEMENTS

PROJECT NUMBER: 468-84248
 DESIGN: RDM/ABG
 DRAWN: TMS
 APPROVED: ABG
 DATE: 2/6/07
 SCALE: Noted
 SHEET: 8 OF 25

Northgate Phase 1\SS\SS1.dwg 06-08-E629