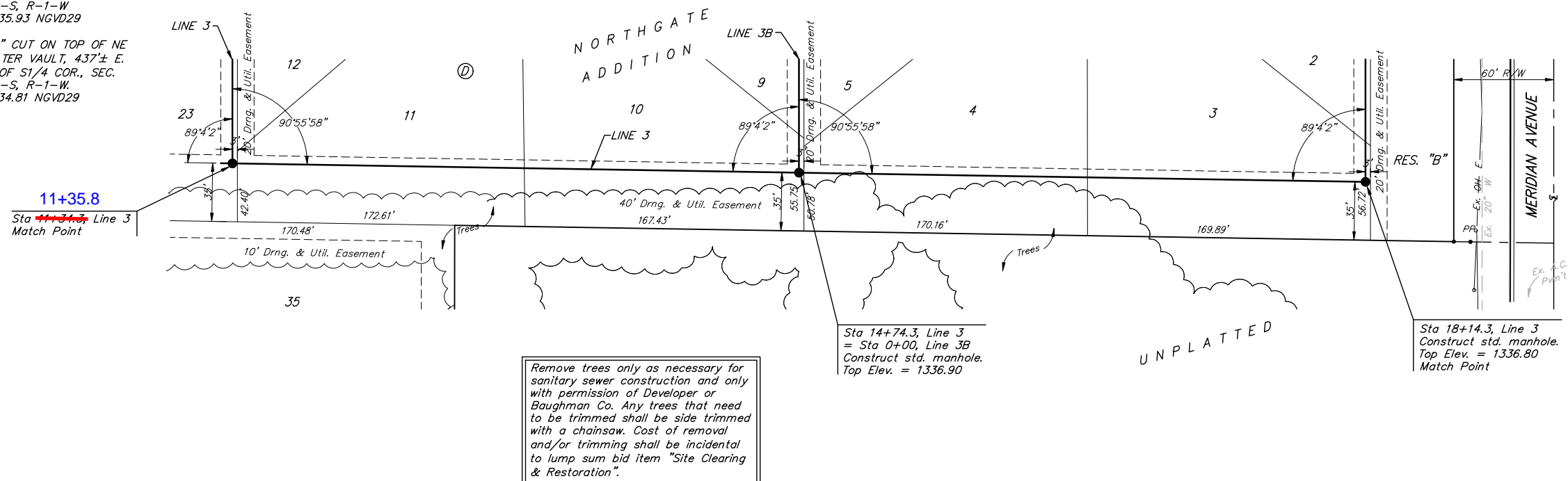


**BENCHMARKS:**  
 BM #1: BENT 60d NAIL IN LIGHT POLE, 55' SSW OF THE E1/4 COR., SEC. 13, TWP. 26-S, R-1-W.  
 ELEV. = 1336.54 NGVD29

BM #2: RAILROAD SPIKE IN E. FACE OF N. "H" POLE, 60± S. OF N. LINE, S1/2, NE1/4, SEC. 13, TWP. 26-S, R-1-W.  
 ELEV. = 1335.93 NGVD29

BM #3: "□" CUT ON TOP OF NE COR. OF WATER VAULT, 437± E. & 54± N. OF S1/4 COR., SEC. 13, TWP. 26-S, R-1-W.  
 ELEV. = 1334.81 NGVD29

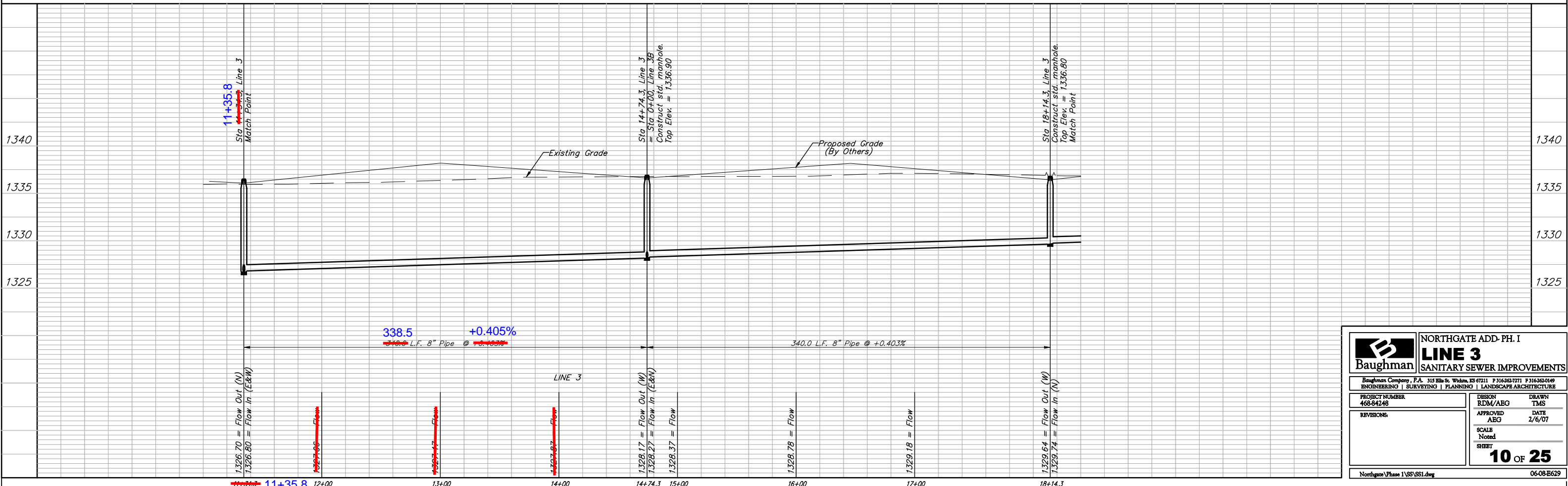


Scale: 1" = 40' Horizontal  
 1" = 5' Vertical  
 • = Iron

Remove trees only as necessary for sanitary sewer construction and only with permission of Developer or Baughman Co. Any trees that need to be trimmed shall be side trimmed with a chainsaw. Cost of removal and/or trimming shall be incidental to lump sum bid item "Site Clearing & Restoration".

Sta 14+74.3, Line 3 = Sta 0+00, Line 3B  
 Construct std. manhole.  
 Top Elev. = 1336.90

Sta 18+14.3, Line 3  
 Construct std. manhole.  
 Top Elev. = 1336.80  
 Match Point



	<b>NORTHGATE ADD- PH. I</b> <b>LINE 3</b> <b>SANITARY SEWER IMPROVEMENTS</b>	
	<small>Baughman Company, P.A. 315 Ellis St. Wichita, KS 67211 P 316-262-7771 F 316-262-0149        ENGINEERING   SURVEYING   PLANNING   LANDSCAPE ARCHITECTURE</small>	
<small>PROJECT NUMBER 468-84248</small>	<small>DESIGN RDM/ABG</small>	<small>DRAWN TMS</small>
<small>REVISIONS</small>	<small>APPROVED ABG</small>	<small>DATE 2/6/07</small>
<small>SCALE Noted</small>		<small>SHEET <b>10 OF 25</b></small>
<small>Northgate Phase 1\SS\SS1.dwg</small>		<small>06-08-E629</small>