

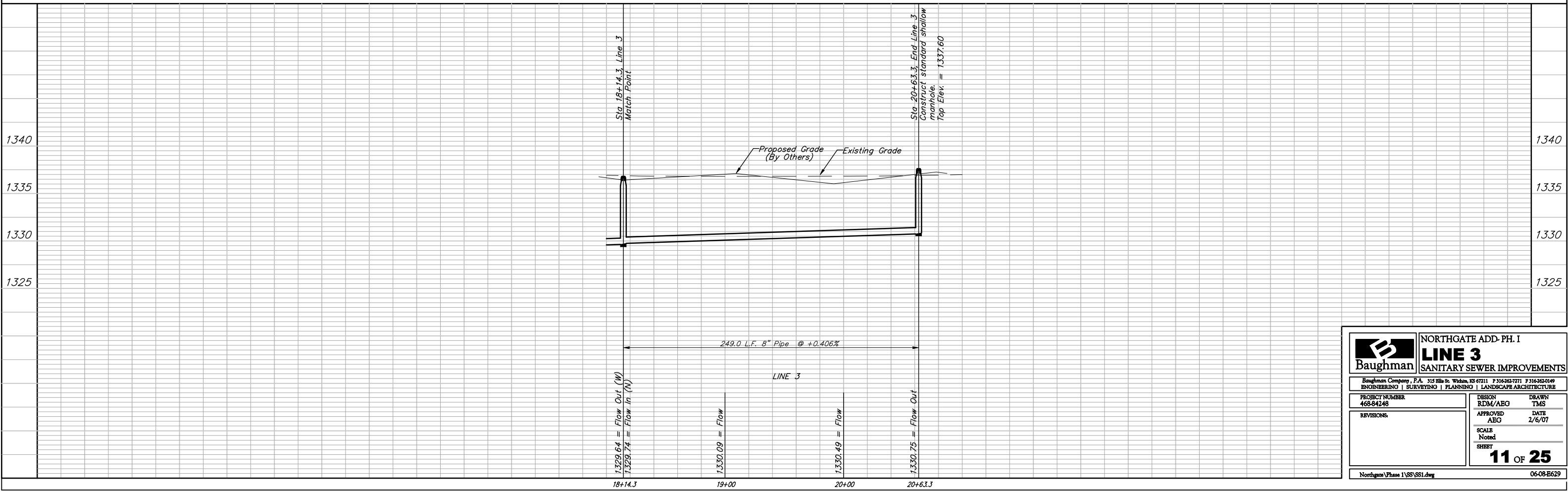
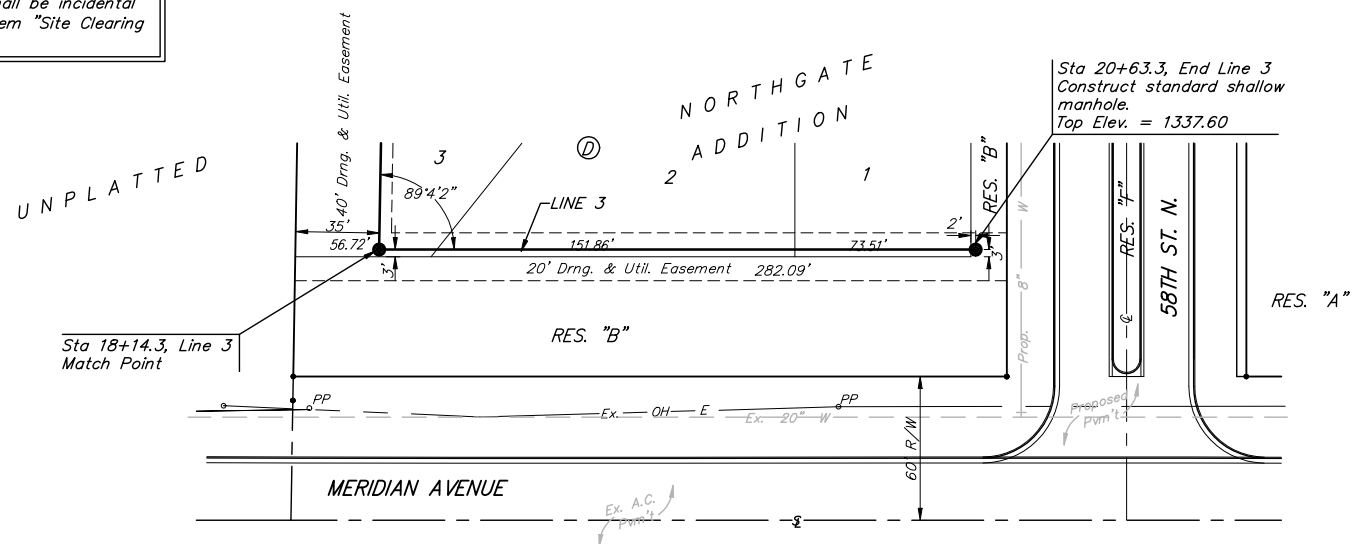
**BENCHMARKS:**  
 BM #1: BENT 60d NAIL IN LIGHT POLE, 55' SSW OF THE E1/4 COR., SEC. 13, TWP. 26-S, R-1-W.  
 ELEV. = 1336.54 NGVD29

BM #2: RAILROAD SPIKE IN E. FACE OF N. "H" POLE, 60± S. OF N. LINE, S1/2, NE1/4, SEC. 13, TWP. 26-S, R-1-W.  
 ELEV. = 1335.93 NGVD29

BM #3: "□" CUT ON TOP OF NE COR. OF WATER VAULT, 437± E. & 54± N. OF S1/4 COR., SEC. 13, TWP. 26-S, R-1-W.  
 ELEV. = 1334.81 NGVD29

Remove trees only as necessary for sanitary sewer construction and only with permission of Developer or Baughman Co. Any trees that need to be trimmed shall be side trimmed with a chainsaw. Cost of removal and/or trimming shall be incidental to lump sum bid item "Site Clearing & Restoration".

Scale: 1" = 40' Horizontal  
 1" = 5' Vertical  
 • = Iron



		<b>NORTHGATE ADD. PH. I</b> <b>LINE 3</b> <b>SANITARY SEWER IMPROVEMENTS</b>	
<small>Baughman Company, P.A. 315 Ellis St. Wichita, KS 67211 P 316262-7771 F 316262-0149        ENGINEERING   SURVEYING   PLANNING   LANDSCAPE ARCHITECTURE</small>			
PROJECT NUMBER 468-84248	DESIGN RDM/ABG	DRAWN TMS	DATE 2/6/07
REVISIONS	APPROVED ABG	SCALE Noted	SHEET <b>11 OF 25</b>
<small>Northgate Phase 1\SS\SS1.dwg</small>		<small>06-08-B629</small>	