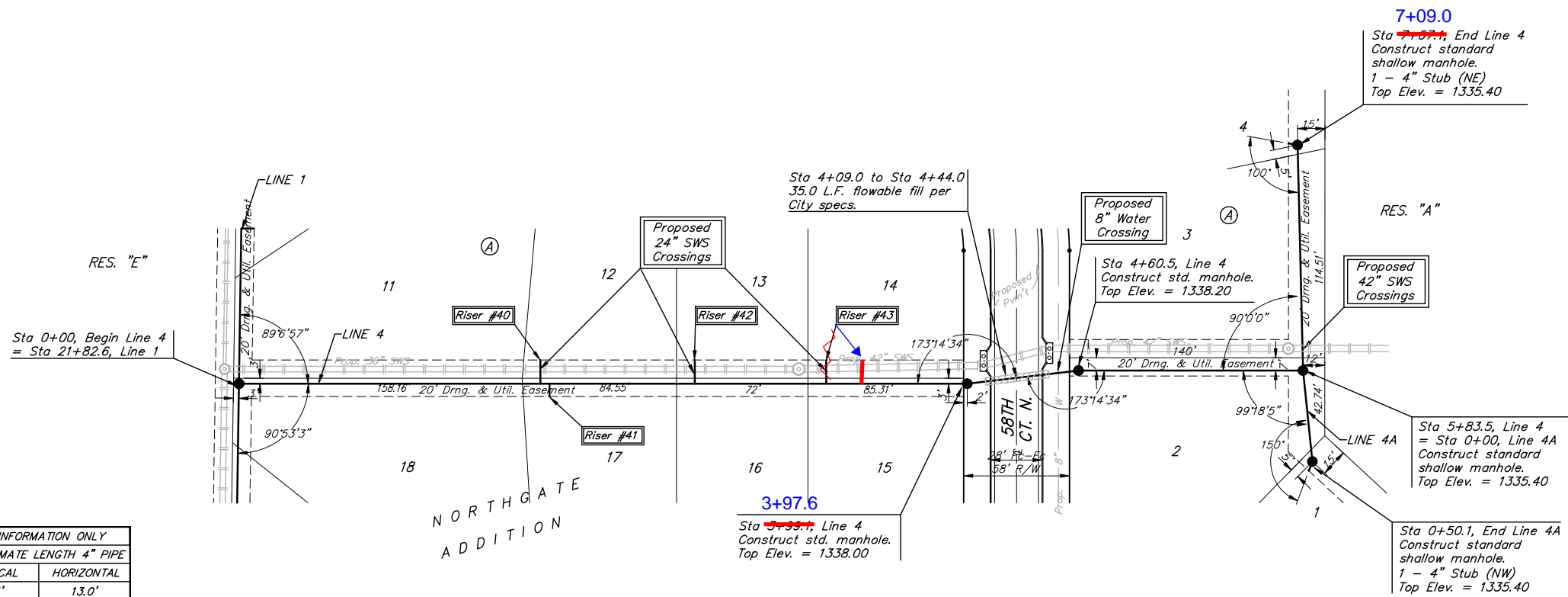


BENCHMARKS:
 BM #1: BENT 60d NAIL IN LIGHT POLE, 55' SSW OF THE E1/4 COR., SEC. 13, TWP. 26-S, R-1-W.
 ELEV. = 1336.54 NGVD29

BM #2: RAILROAD SPIKE IN E. FACE OF N. "H" POLE, 60± S. OF N. LINE, S1/2, NE1/4, SEC. 13, TWP. 26-S, R-1-W.
 ELEV. = 1335.93 NGVD29

BM #3: "□" CUT ON TOP OF NE COR. OF WATER VAULT, 437± E. & 54± N. OF S1/4 COR., SEC. 13, TWP. 26-S, R-1-W.
 ELEV. = 1334.81 NGVD29

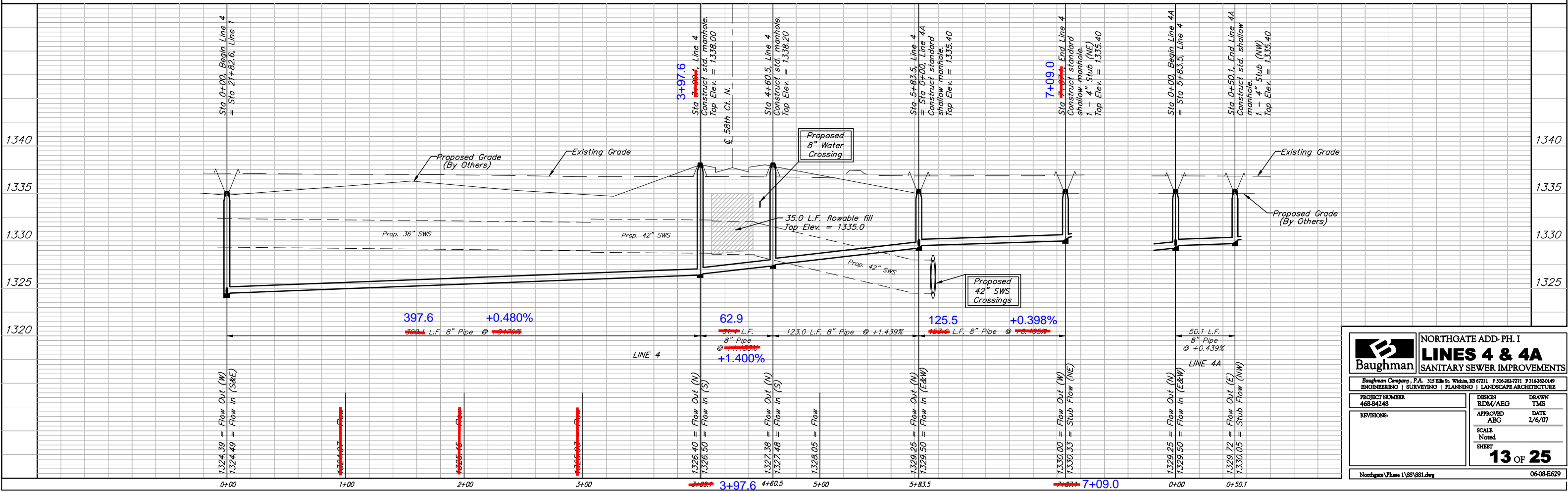
Scale: 1" = 40' Horizontal
 1" = 5' Vertical
 • = Iron



SEWER SERVICE TABLE

NUMBER	TYPE	LOCATION				FOR INFORMATION ONLY		
		LOT NO.	BLOCK NO.	LINE NO.	STATION \ DIRECTION	APPROXIMATE LENGTH 4" PIPE	VERTICAL	HORIZONTAL
40	8" X 4" Tee	12	A	4	1+70/Lt.	64	9.5'	13.0'
41	8" X 4" Tee	17	A	4	1+70/Rt.	69	9.5'	7.0'
42	8" X 4" Tee	13	A	4	2+50/Lt.	50.5	8.5'	13.0'
43	8" X 4" Tee	14	A	4	3+22/Lt.	41.5	7.5'	13.0'

NOTE: Vertical Riser Pipe shall be extended to 2' minimum above ground water elevation and 4' maximum below proposed ground elevation.



Baughman NORTHGATE ADD. PH. I
LINES 4 & 4A
 SANITARY SEWER IMPROVEMENTS

PROJECT NUMBER: 468-84248
 DESIGN: RDM/AEG
 DRAWN: TMS
 APPROVED: AEG
 DATE: 2/6/07
 SCALE: Noted
 SHEET: 13 OF 25

Northgate Phase I\SS\SS1.dwg 06-08-E629