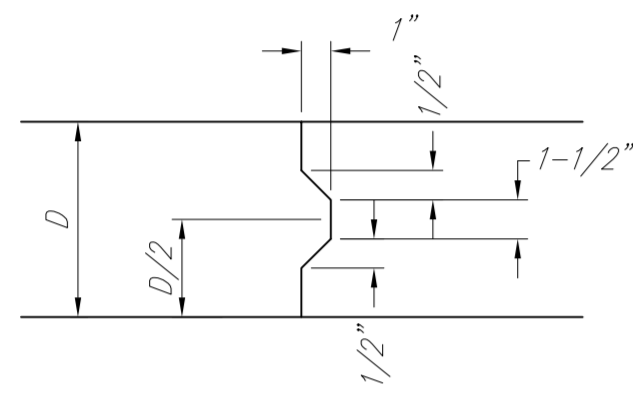
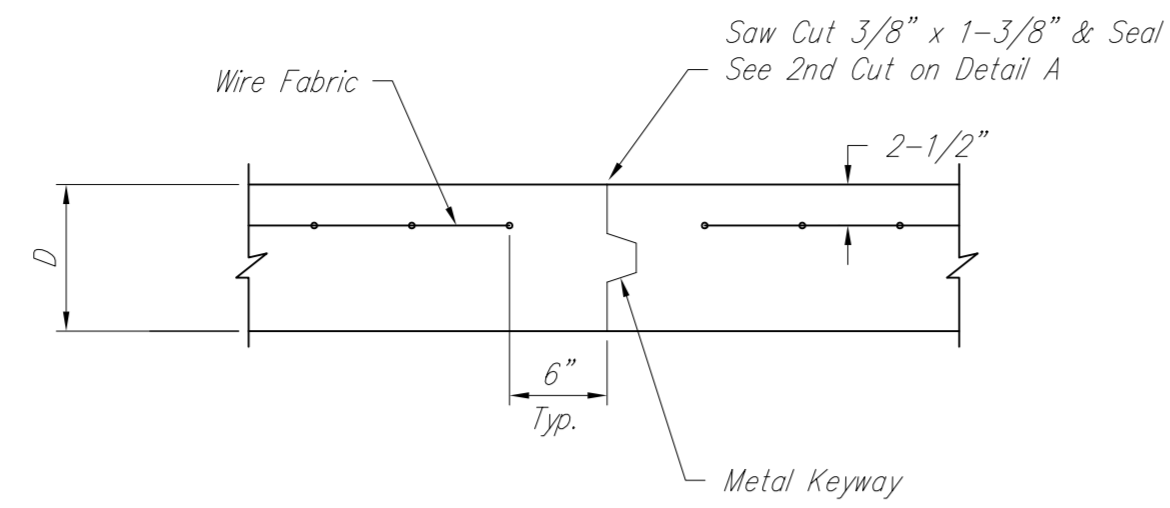


**EXPANSION JOINT**

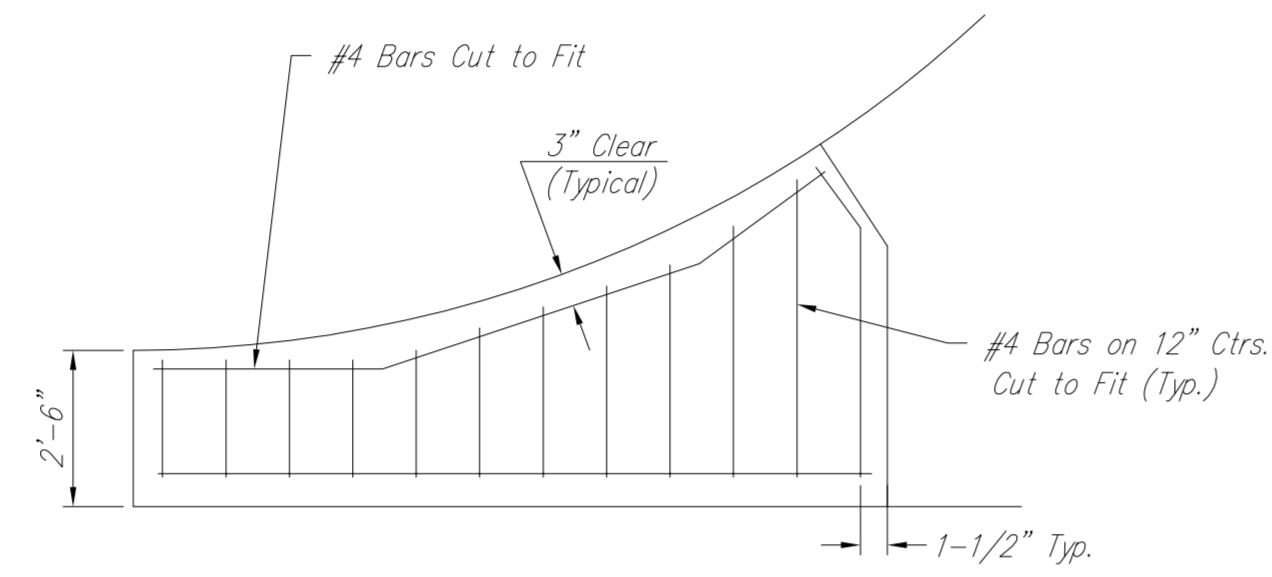
NOTE: Extra Thickness to be Subsidiary to Price of Square Yards Pavement



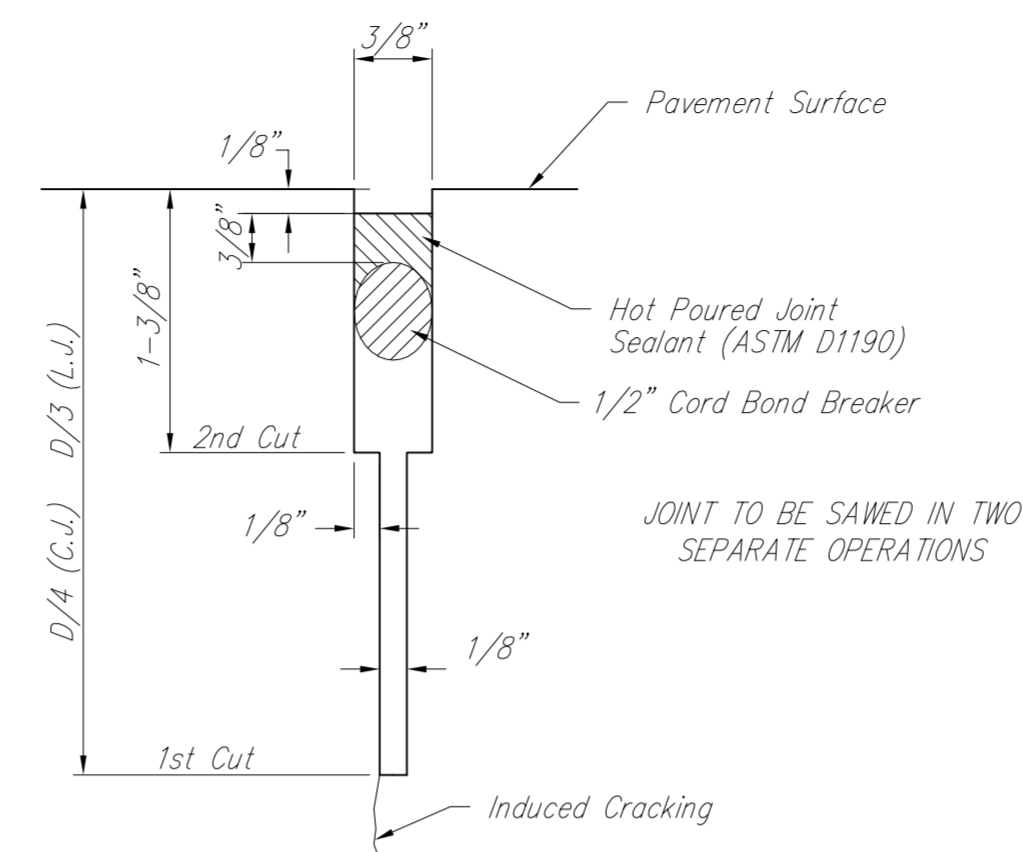
**KEYWAY DETAIL**



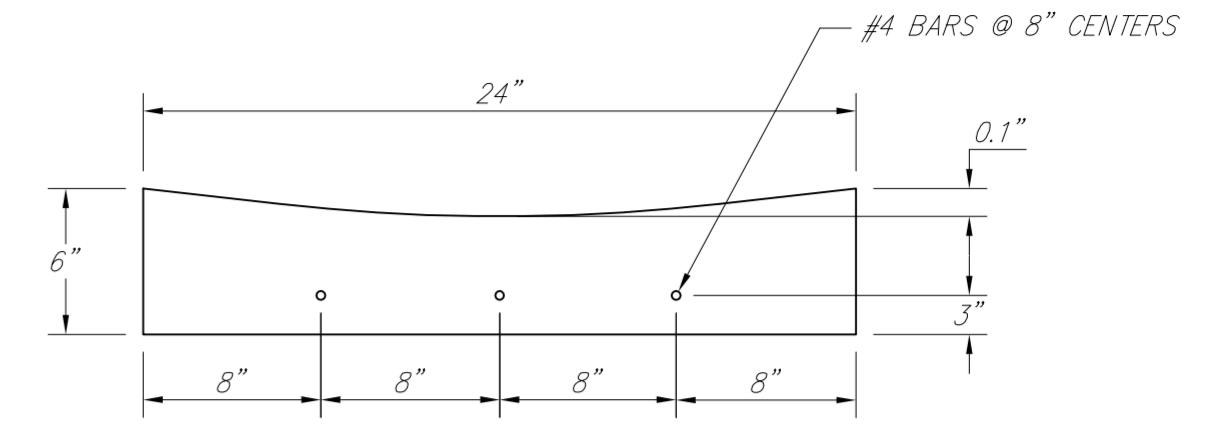
**OPTIONAL CONTRACTION JOINT**



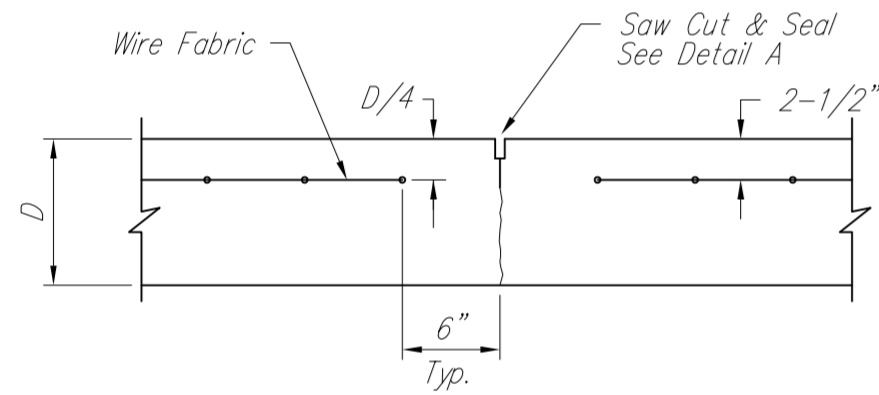
**WING REINFORCING DETAIL**



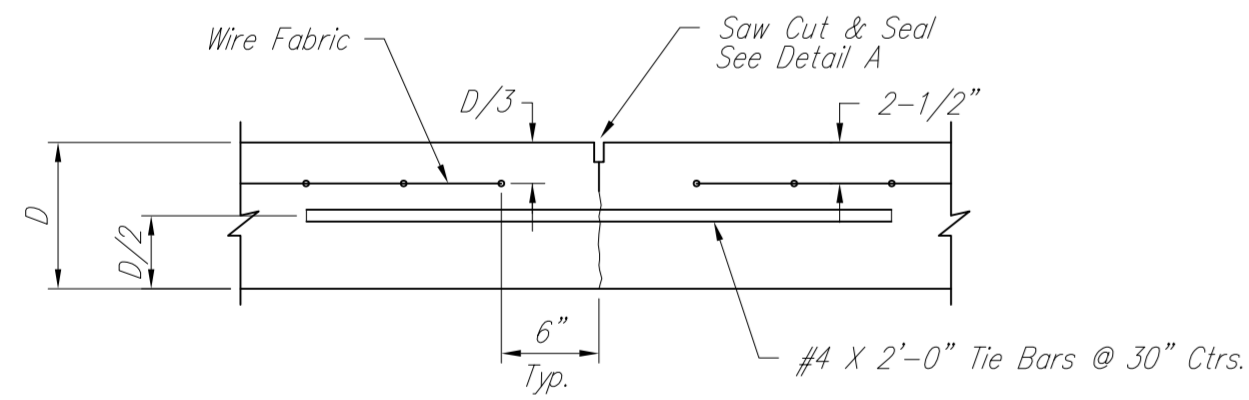
**SAW JOINT DETAIL**



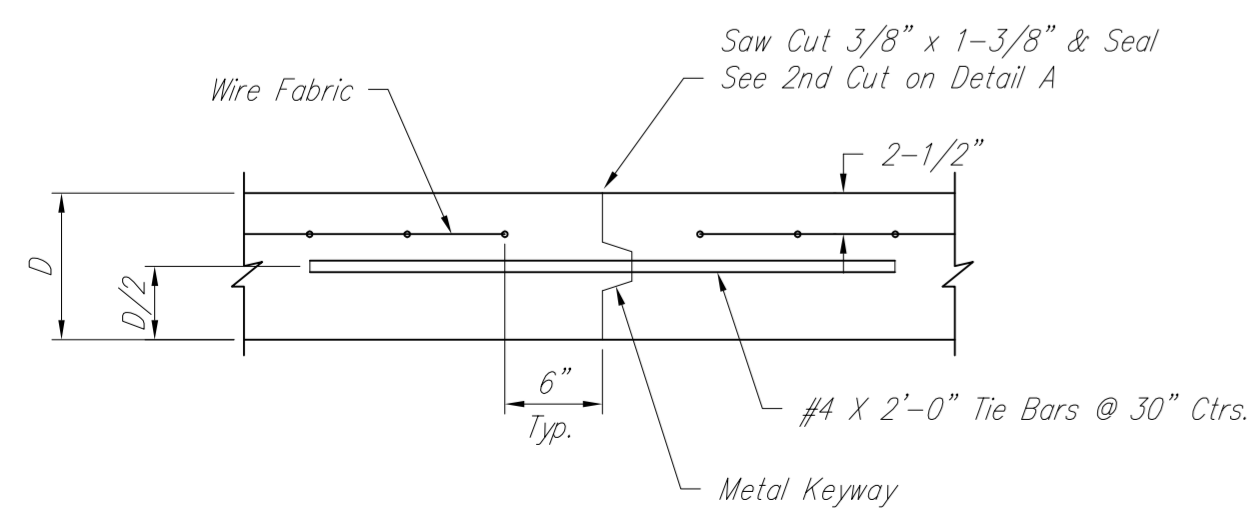
**CONCRETE FLUME DETAIL**



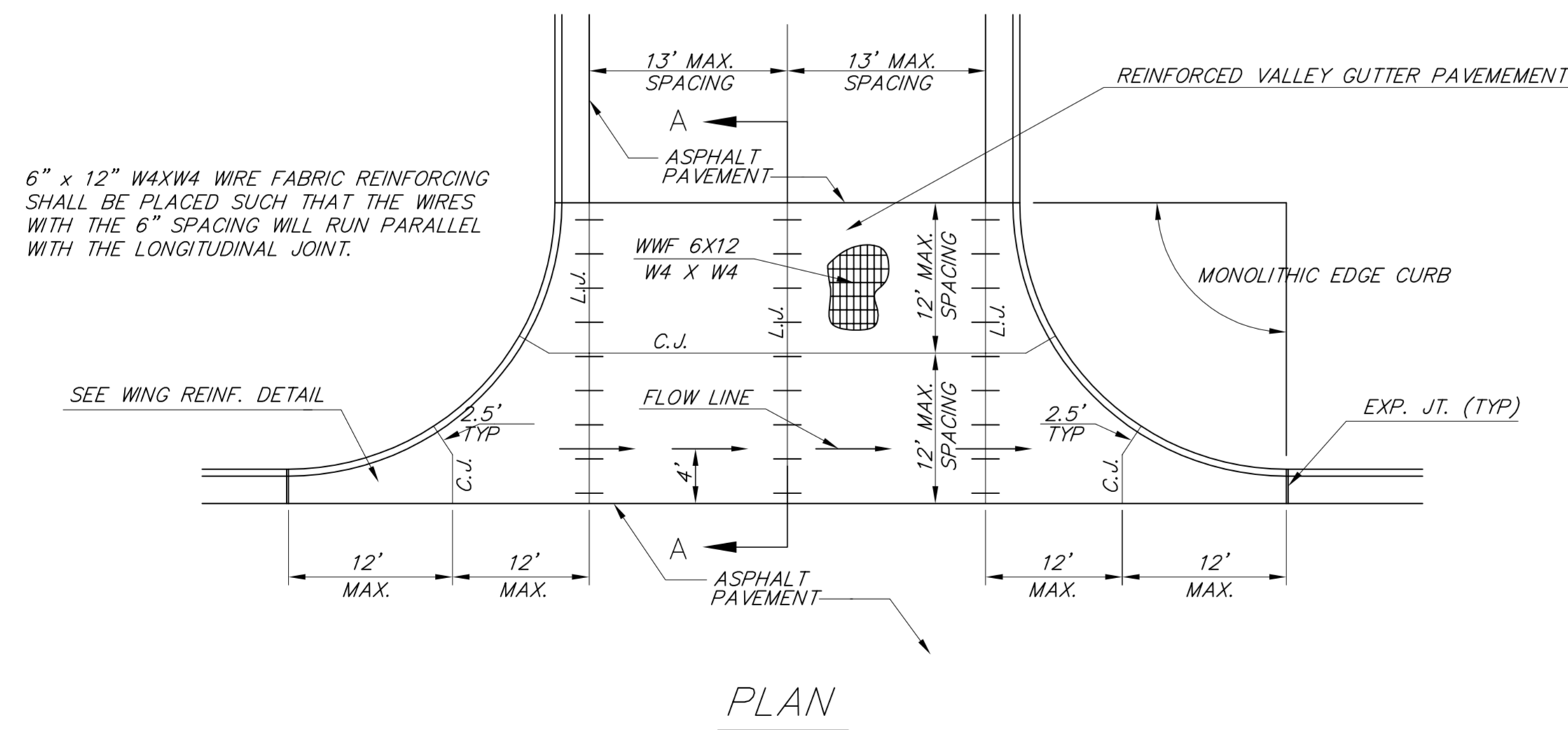
**CONTRACTION JOINT DETAIL (C.J.)**



**LONGITUDINAL JOINT DETAIL (L.J.)**

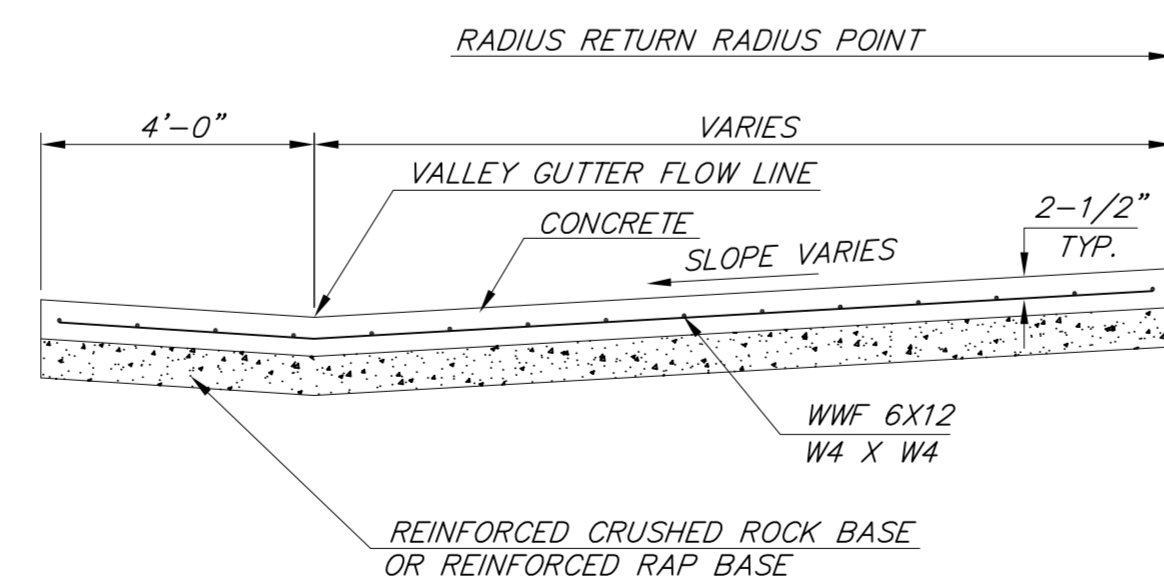


**OPTIONAL LONGITUDINAL JOINT DETAIL (L.J.)**



**PLAN**

6" x 12" W4XW4 WIRE FABRIC REINFORCING SHALL BE PLACED SUCH THAT THE WIRES WITH THE 6" SPACING WILL RUN PARALLEL WITH THE LONGITUDINAL JOINT.



**SECTION A-A**

**REINFORCED VALLEY GUTTER DETAIL**

<p>THE CITY OF WICHITA</p> <p>CITY ENGINEER'S OFFICE CITY HALL - SEVENTH FLOOR 455 NORTH MAIN STREET WICHITA, KANSAS 67202 (316) 268-4501 (316) 268-4114 FAX</p>	<b>VALLEY GUTTER DETAILS</b>	
	<b>WHEELCHAIR RAMP DETAILS</b>	
	PROJECT NUMBER 472-84447	OCA # 766180
DATE MAR 96	SHEET 15 OF 36	