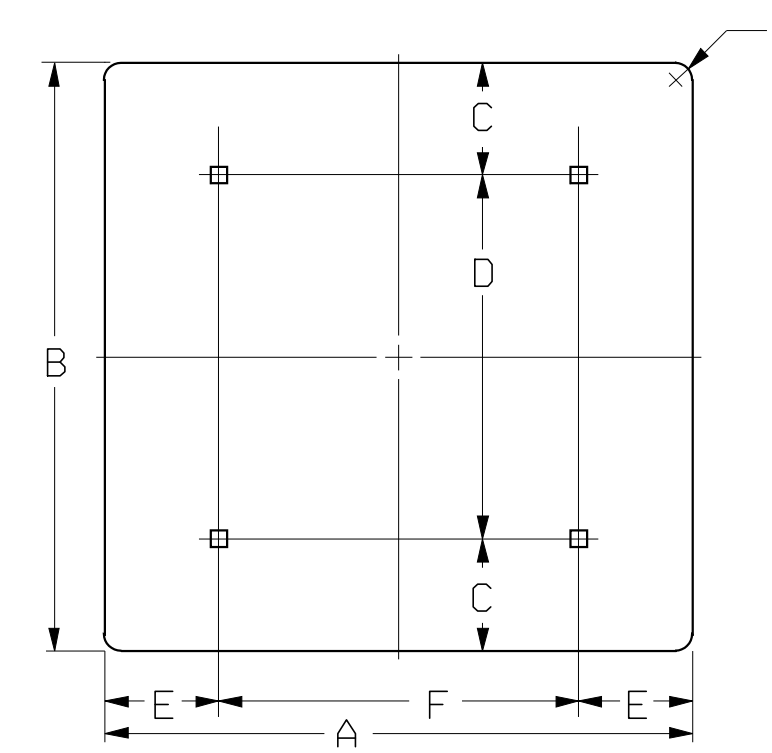
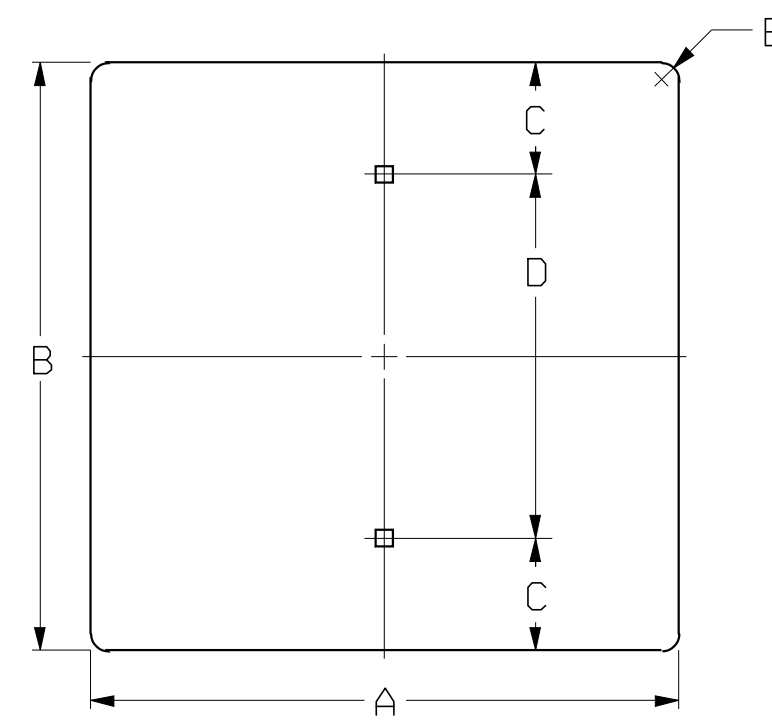


APPROVED	DESIGNED	QUANTITIES	QUANLCK
DETAILED	DETAIL CK.	TRACED	TRACE CK.



STATE	PROJECT NO.	YEAR	SHEET NO.	TOTAL SHEETS
KANSAS				

SIGN SIZE	A	B	C	D	E	T	AREA
3 X 8	3	8	1	6	3/8	0.040	0.17
6 X 12	6	12	3	6	3/8	0.040	0.50
12 X 6	12	6	1/2	3	3/8	0.063	0.50
12 X 18	12	18	3	12	1/2	0.063	1.50
12 X 24	12	24	3	18	1/2	0.080	2.00
12 X 36	12	36	6	24	1/2	0.080	3.00
12 X 48	12	48	6	36	1/2	0.080	4.00
15 X 15	15	15	1/2	12	1/2	0.063	1.56
18 X 6	18	6	1/2	3	1/2	0.063	0.75
18 X 12	18	12	3	6	1/2	0.063	1.50
18 X 18	18	18	3	12	1/2	0.063	2.25
18 X 24	18	24	3	18	1/2	0.080	3.00
21 X 15	21	15	1/2	12	1/2	0.080	2.19
24 X 6	24	6	1/2	3	1/2	0.080	1.00
24 X 12	24	12	3	6	1/2	0.080	2.00
24 X 18	24	18	3	12	1/2	0.080	3.00
24 X 24	24	24	3	18	1/2	0.080	4.00
24 X 30	24	30	3	24	1/2	0.080	5.00
24 X 36	24	36	6	24	1/2	0.080	6.00
30 X 15	30	15	1/2	12	1/2	0.080	3.13
30 X 18	30	18	3	12	1/2	0.080	3.75
30 X 24	30	24	3	18	1/2	0.080	5.00
30 X 30	30	30	3	24	1/2	0.080	6.25
30 X 36	30	36	6	24	1/2	0.080	7.50
36 X 12	36	12	3	6	1/2	0.080	3.00
36 X 18	36	18	3	12	1/2	0.080	4.50
36 X 24	36	24	3	18	1/2	0.080	6.00
36 X 30	36	30	3	24	1/2	0.080	7.50
36 X 36	36	36	6	24	1/2	0.080	9.00

SIGN SIZE	A	B	C	D	E	F	G	T	AREA
36 X 12	36	12	3	6	6	24	1/2	0.080	3.00
36 X 18	36	18	6	12	6	30	1/2	0.080	4.50
36 X 24	36	24	6	12	6	24	1/2	0.080	6.00
36 X 30	36	30	6	18	6	30	1/2	0.080	7.50
36 X 36	36	36	6	24	6	24	1/2	0.080	9.00
36 X 42	36	42	6	30	6	30	1/2	0.080	10.50
48 X 12	48	12	3	6	9	30	1/2	0.080	4.00
48 X 18	48	18	3	12	9	30	1/2	0.080	6.00
48 X 24	48	24	6	12	9	30	2	0.080	8.00
48 X 30	48	30	6	18	9	30	0	0.100	10.00
48 X 36	48	36	6	24	9	30	0	0.100	12.00
48 X 42	48	42	6	30	9	30	0	0.100	14.00
48 X 48	48	48	9	30	9	30	0	0.100	16.00
48 X 72	48	72	15	42	9	30	0	0.100	24.00
48 X 96	48	96	21	54	9	30	0	0.100	32.00
54 X 36	54	36	6	30	12	30	0	0.100	13.50
54 X 42	54	42	6	30	12	30	0	0.100	15.75
60 X 12	60	12	3	6	12	36	0	0.100	5.00
60 X 18	60	18	3	12	12	36	0	0.100	7.50

SIGN SIZE	A	B	C	D	E	F	G	T	AREA
60 X 24	60	24	6	12	12	36	0	0.100	10.00
60 X 30	60	30	6	18	12	36	0	0.100	12.50
60 X 36	60	36	6	24	12	36	0	0.100	15.00
60 X 42	60	42	6	30	12	36	0	0.100	17.50
60 X 48	60	48	9	30	12	36	0	0.100	20.00
60 X 60	60	60	12	36	12	36	0	0.100	25.00
72 X 12	72	12	3	6	15	42	0	0.100	6.00
72 X 18	72	18	3	12	15	42	0	0.100	9.00
72 X 24	72	24	6	12	15	42	0	0.100	12.00
72 X 30	72	30	6	18	15	36	0	0.100	15.00
72 X 36	72	36	6	24	15	42	0	0.100	18.00
72 X 42	72	42	6	30	15	42	0	0.100	21.00
72 X 48	72	48	9	30	15	42	0	0.100	24.00
84 X 18	84	18	6	12	15	48	0	0.100	10.50
84 X 30	84	30	6	18	18	48	0	0.100	17.50
84 X 36	84	36	6	24	18	48	0	0.100	21.00
84 X 42	84	42	6	30	18	48	0	0.100	24.50
84 X 48	84	48	9	30	18	48	0	0.100	28.00

NOTE:  
All holes are 3/8" square, unless otherwise noted.

The dimension "T" is the thickness of the aluminum blank.

- ① Holes shall be 5/16" Diameter.
- ② Dimension "D" requires a Center Hole.

All dimensions are in inches.

3					
2					
1					
NO.	DATE	REVISIONS	BY	APP'D	

KANSAS DEPARTMENT OF TRANSPORTATION  
SIGN BLANK DETAILS FOR  
FLAT SHEET SIGNS

TE506 07-01-03

DESIGNED	DDG	DETAILED	AKB	QUANTITIES	TRACED
DESIGN CK.	SAB	DETAIL CK.	DDG	QUAN. CK.	TRACE CK.

4					
3					
2					
1					
NO.	DATE	REVISIONS	BY	APP'D	