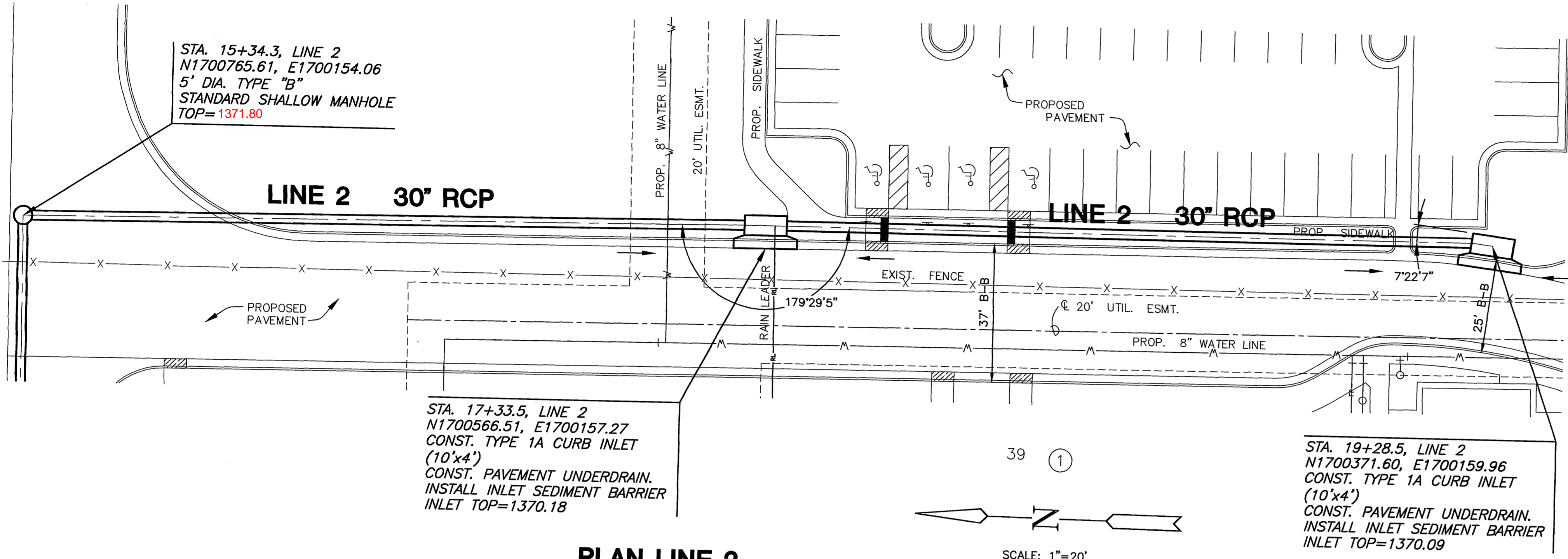
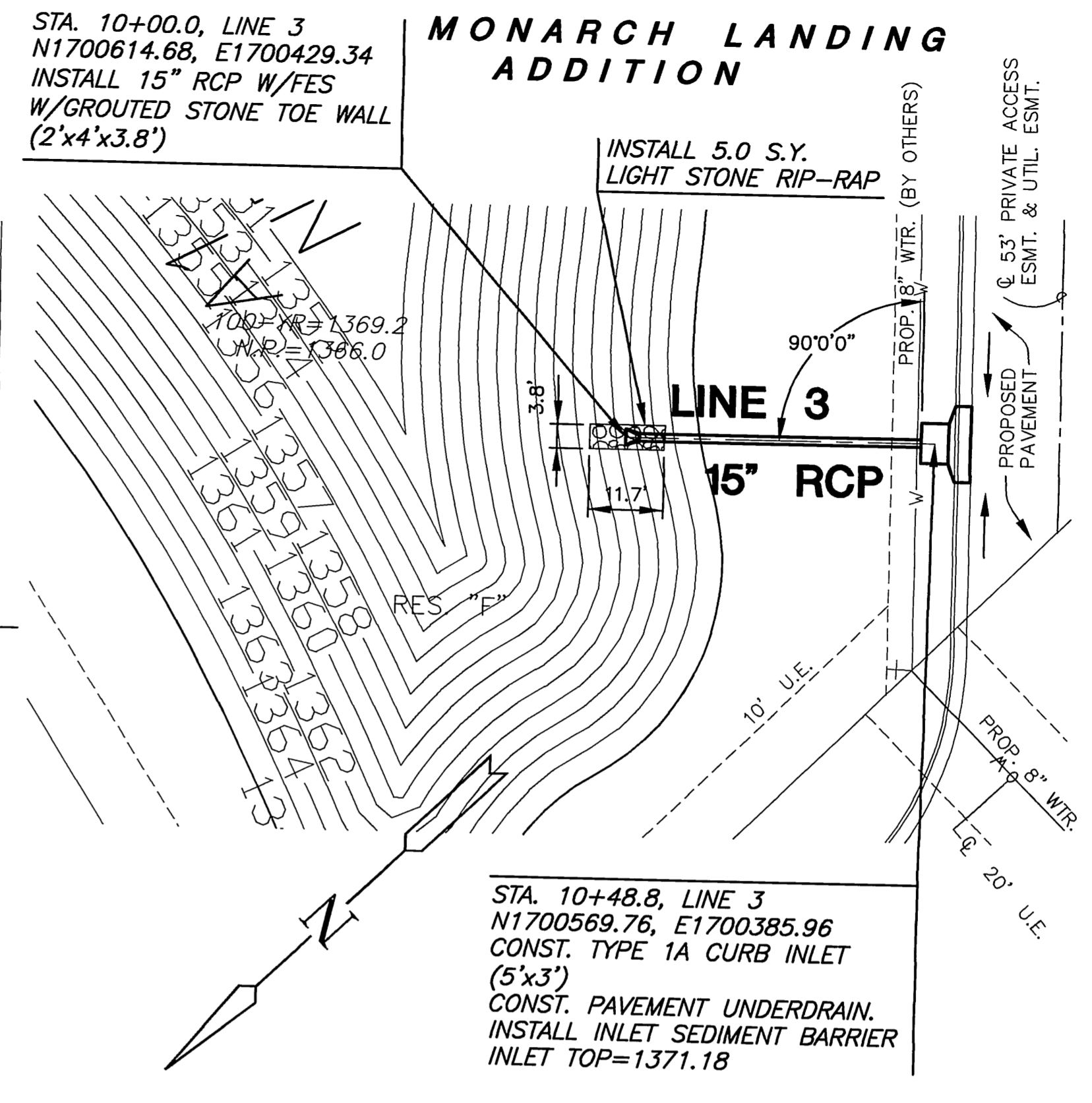


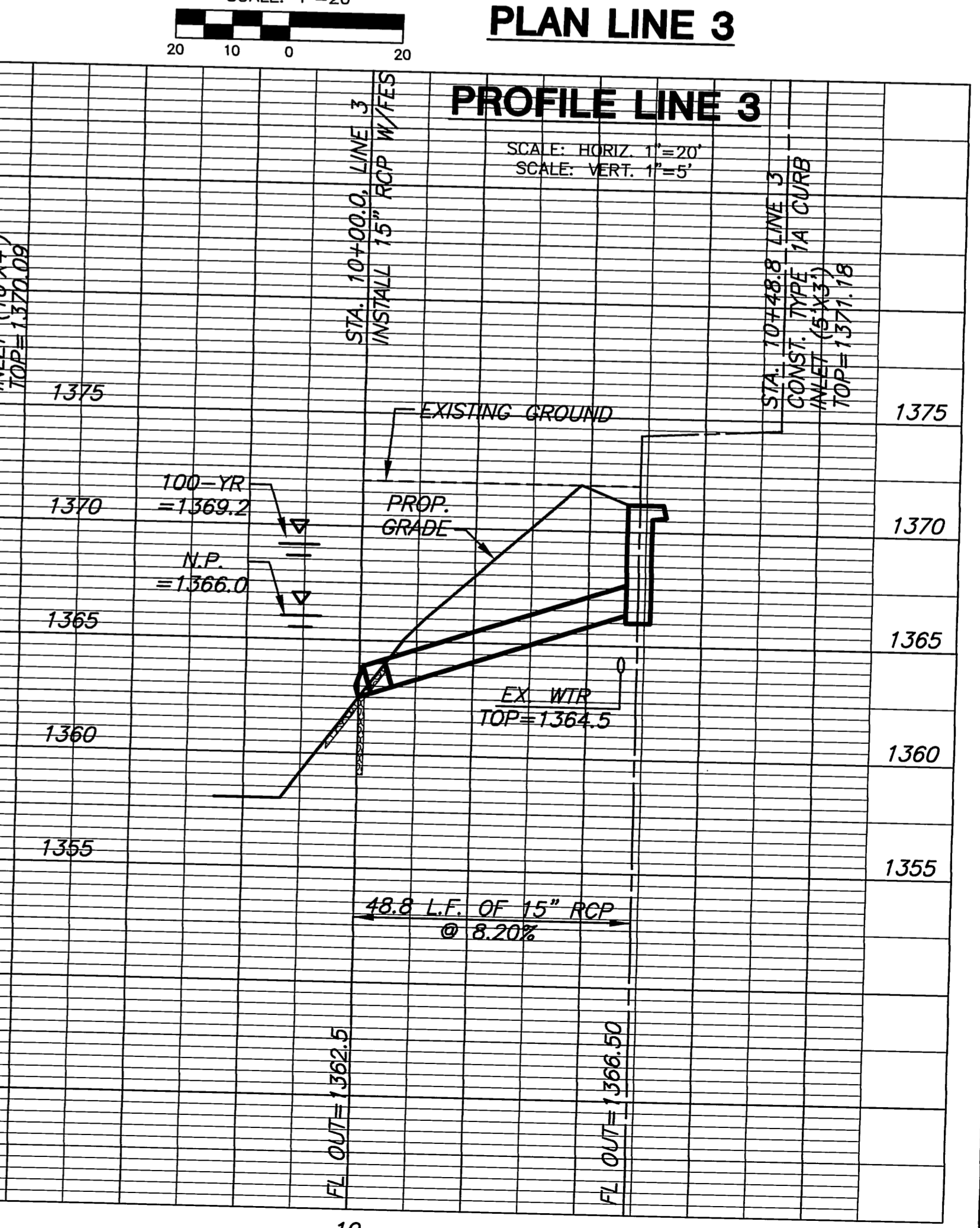
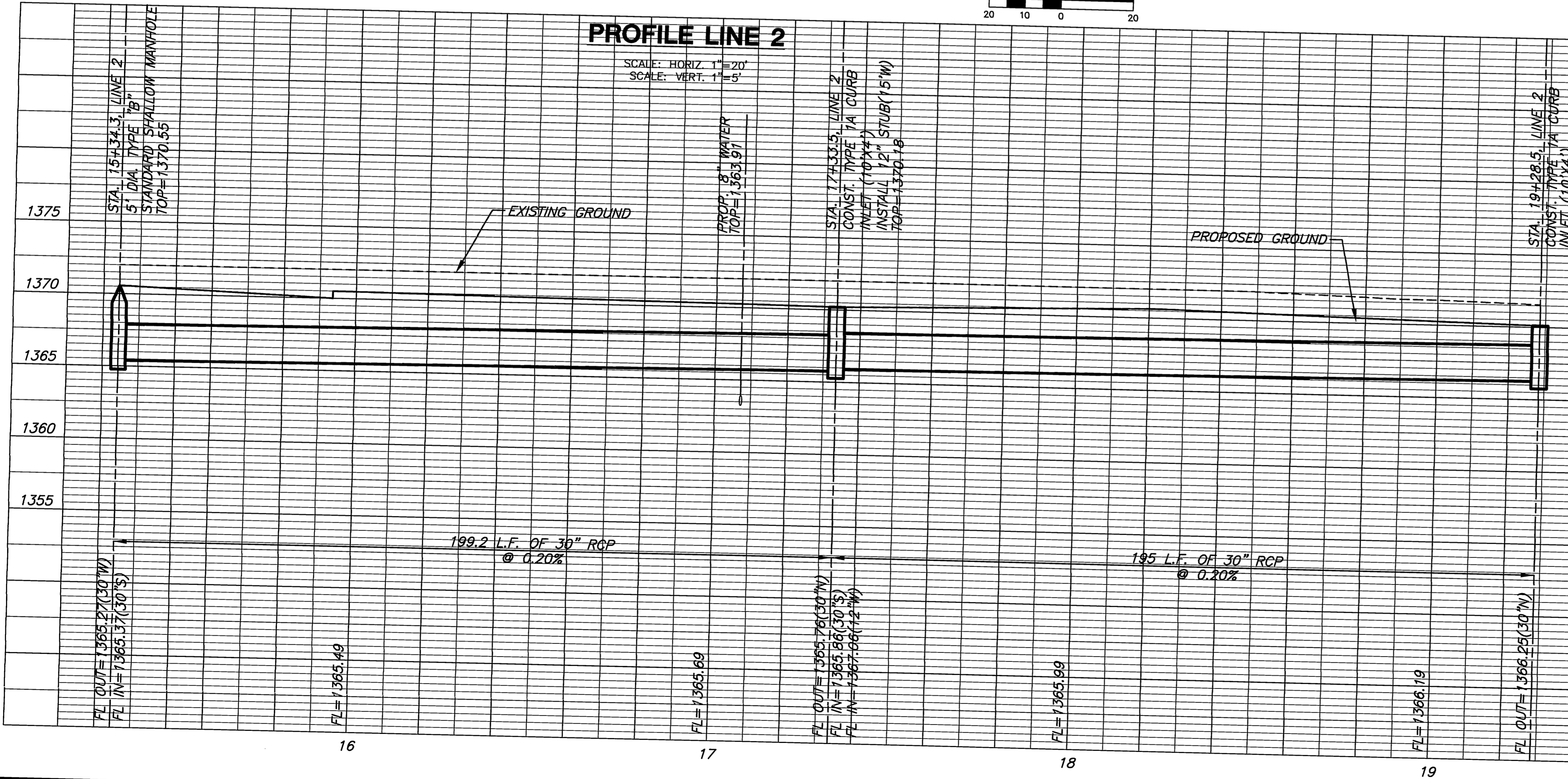
MONARCH LANDING ADDITION



PLAN LINE 2



PLAN LINE 3



MKEC
 ENGINEERING
 CONSULTANTS, INC.
 411 N. WEBB ROAD
 WICHITA, KS. 67206
 316-684-9600

SCOTT R. SERRIS
 LICENSED PROFESSIONAL ENGINEER
 KANSAS
 3/19/07

STORM WATER SEWER PLANS
ANDOVER ELEMENTARY SCHOOL #2
 LOT 39, BLOCK 1 MONARCH LANDING ADDITION

LINES 2 & 3
 SHEET TITLE
 06544
 PROJECT NUMBER

DESIGN BY: SRS
 DRAWN BY: MK
 CHECKED BY: MAB

ISSUED: MARCH 2007
 REVISED:

SHEET NO.
4 of 5

PLOTTED: Monday, March 19, 2007 @ 12:08PM