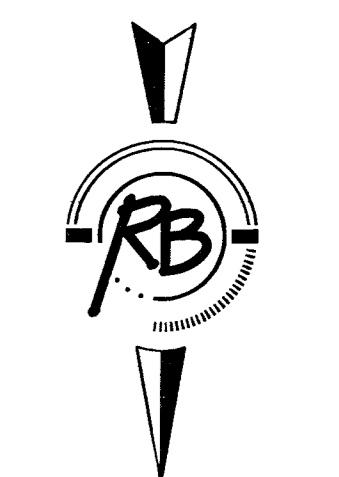


SEWER SERVICE TABLE

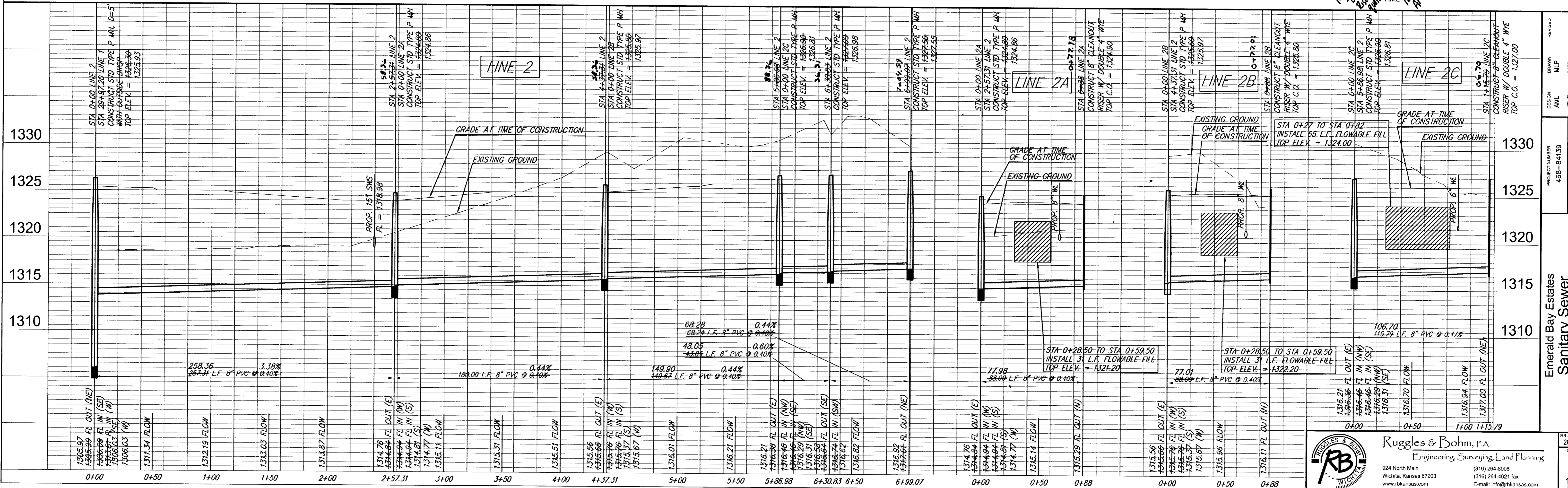
NUMBER	TYPE	LOCATION			FOR INFORMATION ONLY	
		LOT NO.	BLOCK NO.	LINE NO.	STATION \ DIRECTION	APPROXIMATE LENGTH 4" PIPE
19	8" X 4" Tee Saddle	15	1	2	0+18/R 44	7'
20	8" X 4" Tee Saddle	14	1	2	1+75/R 73	6'
21	4" MH Riser	13	1	2	2+57/R 50	5'
22	8" X 4" Tee Saddle	12	1	2	3+65/R 64	6'
23	4" MH Riser	11	1	2	4+31/R 38	5'
24	4" MH Riser	10	1	2	6+31/R 36	5'
25	4" MH Riser	9	1	2	6+31/R 36	5'
26	4" MH Riser	8	1	2	6+99/R 704	5'
27	8" X 4" Double Wye	2	1	2A	0+83/L 78	5'
28	8" X 4" Double Wye	3	1	2A	0+83/L 78	5'
29	8" X 4" Double Wye	4	1	2B	0+83/L 77	5'
30	8" X 4" Double Wye	5	1	2B	0+83/R 77	5'
31	8" X 4" Double Wye	6	1	2C	1+31/L 07	5'
32	8" X 4" Double Wye	7	1	2C	1+31/R 07	5'

NOTE: Vertical Riser Pipe shall be extended to 2' minimum above ground water elevation and 4' maximum below proposed ground elevation.

NOTE: ALL BACKFILL FOR SHALL BE SAND FLUSHED AND VIBRATED.



"AS-BUILT"
 12-4-07
 RB
 3-15-07
 AML
 P-171
 AML



Ruggles & Bohn, P.A.
 Engineering, Surveying, Land Planning

924 North Main (316) 264-8008
 Wichita, Kansas 67203 (316) 264-4621 fax
 www.rtkansas.com E-mail: info@rtkansas.com

RB JOB 2822E
 SHEET 17

PROJECT NUMBER: 468-84139
 DESIGN: AML
 DRAWING FILE: Sanitary Sewer (LINE 2A-D)

EMERALD BAY ESTATES
 Sanitary Sewer
 WICHITA, KANSAS

DESIGNED BY: AML
 DRAWN BY: MLP
 CHECKED BY: AML
 DATE: Jun. 5, 2006
 REVIEW: []