

NOTE: ALL BACKFILL FOR SHALL BE SAND FLUSHED AND VIBRATED.

Unplatted

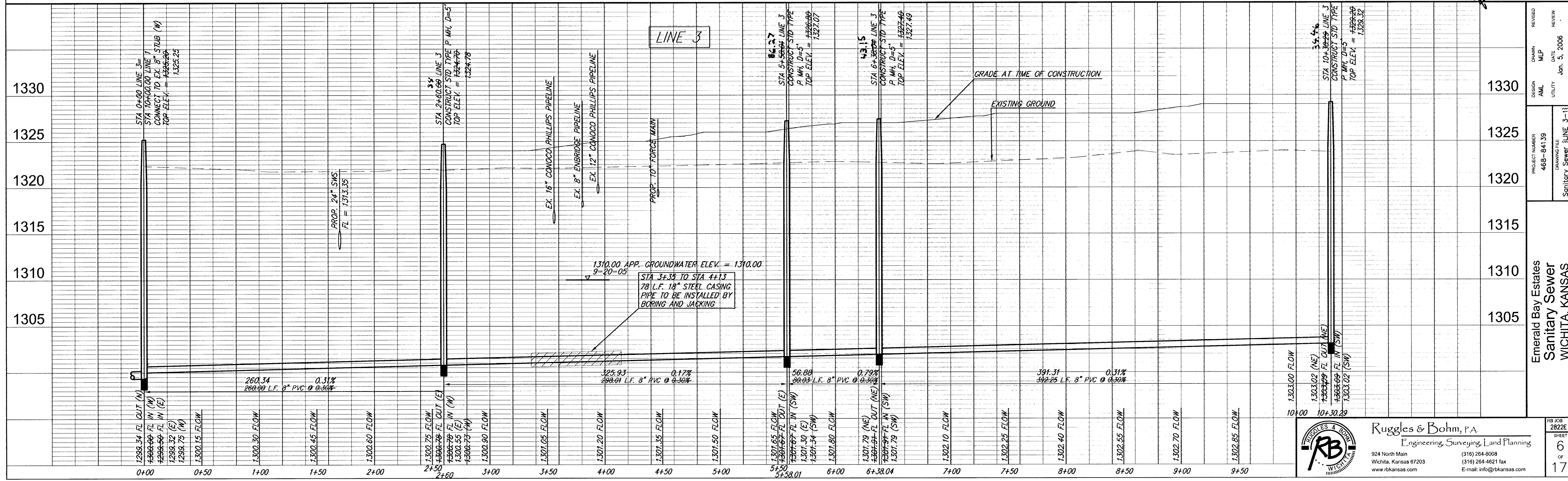
SEWER SERVICE TABLE

NUMBER	TYPE	LOCATION			FOR INFORMATION ONLY	
		LOT NO.	BLOCK NO.	LINE NO.	STATION\ DIRECTION	APPROXIMATE LENGTH 4" PIPE
33	4" MH Riser	34	1	3	0+00/L	21'
34	8" X 4" Tee Saddle	35	1	3	1+15/L	20'
35	8" X 4" Tee Saddle	36	1	3	2+05/L	19'
36	8" X 4" Tee Saddle	37	1	3	5+22/L	21'
37	8" X 4" Tee Saddle	38	1	3	7+08/L	21'
38	8" X 4" Tee Saddle	39	1	3	7+98/L	22'
39	8" X 4" Tee Saddle	40	1	3	8+85/L	22'
40	8" X 4" Tee Saddle	41	1	3	9+25/L	22'

NOTE: Vertical Riser Pipe shall be extended to 2' minimum above ground water elevation and 4' maximum below proposed ground elevation.

SCALE 1" = 40' HORIZ.
1" = 5' VERT.
IRON = ●

"AS-BUILT"
12-2-07
3-15-07
AML



REVISIONS

NO.	DATE	BY	REVISION
1	Jan. 3, 2006	MLP	DESIGN
2		AML	UTILITY

PROJECT NUMBER: 468-84139
DRAWING FILE: Sanitary Sewer (LINE 3-1)

Emerald Bay Estates
Sanitary Sewer
WICHITA, KANSAS

Ruggles & Bohm, P.A.
Engineering, Surveying, Land Planning
924 North Main
Wichita, Kansas 67203
www.rbkansas.com
(316) 264-8008
(316) 264-4621 fax
E-mail: info@rbkansas.com

RB JOB 2822E
SHEET 6 OF 17