

REVISIONS		
NO.	DESCRIPTION	DATE

LEFT TURN IMPROVEMENTS & SIGNAL PLANS TO SERVE NORTHGATE COMMERCIAL 1st ADDITION WICHITA, KANSAS

NW 54th ST. NORTH & N. MERIDIAN
CITY OF WICHITA PRIVATE PROJECT NO. 178PPP (607879)
JAMES ARMOR, P.E., CITY ENGINEER

INDEX OF SHEETS

- COVER SHEET
- T1. KEY MAP AND GENERAL NOTES
- T1A. BILL OF MATERIALS
- T2. TYPICAL SECTIONS
- T3-T4. PLAN AND PROFILE
- T5. ISLAND DETAIL
- T6. SIGNAL PLAN
- T7. WIRING DIAGRAM
- T8. TRAFFIC SIGNAL QUANTITIES SHEET
- T9. STRIPING PLAN

KDOT STANDARDS

- DELETED T10 T12. TRAFFIC SIGNAL INSTALLATION DETAIL SHEET
- T13. TRAFFIC SIGNAL INSTALLATION DETAIL SHEET
- DELETED T14 T17. TRAFFIC SIGNAL SPECIFICATIONS
- T18. TYPICAL MISCELLANEOUS PAVEMENT MARKING

CITY OF WICHITA STANDARDS

- T19. STEEL SIGNAL POLE ASSEMBLY DETAILS
- T20. SERVICE/JUNCTION BOX, CONTROLLER PAD CONSTRUCTION/INSTALLATION DETAILS
- T21. SIGNING DETAILS
- T22-T23. STANDARD DRIVE
- T24. VALLEY GUTTER DETAILS & WHEELCHAIR RAMP DETAILS
- T25. STANDARD WHEELCHAIR RAMP (TYPE A)
- T26. PAVEMENT ASPHALT CONCRETE STANDARD

RESOURCE LIST

GAS COMPANY
AQUILA GAS COMPANY
1611 SOUTH HOOVER
WICHITA, KANSAS 67209
PH: (316) 941-1888
CONTACT: CALVIN BRIGGS

ELECTRIC COMPANY
WESTAR ENERGY
201 NORTH MARKET
WICHITA, KS 67202
PH: (316) 281-8624
CONTACT: SHANE PRICE

KANSAS GAS SERVICE
1021 EAST 26TH STREET NORTH
WICHITA, KANSAS 67219
PH: (316) 832-3101
CONTACT: CHARLENE LAWLSS

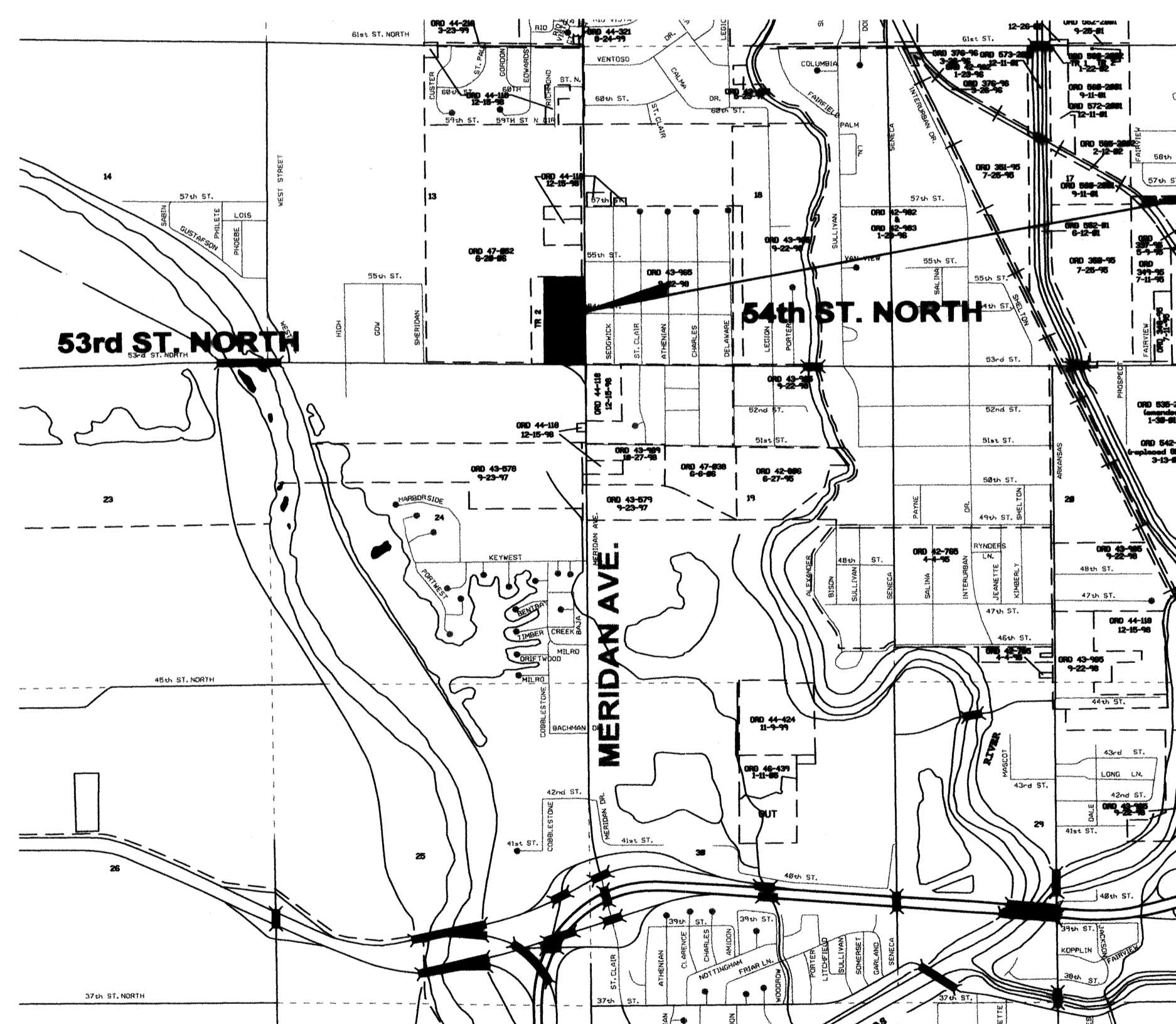
WATER & SEWER COMPANY
CITY OF WICHITA, KS
CITY HALL 466 NORTH MAIN
WICHITA, KS 67202
PH: (316) 288-4855
FAX: (620) 421-7080
CONTACT: BILL PERKINS

KANSAS DEPT. OF TRANSPORTATION (KDOT)
DISTRICT 5 (SOUTH CENTRAL DIVISION)
ROBERT COOK - DISTRICT ENGINEER
PH: (620) 863-3361

PLANNING / ZONING
CITY OF WICHITA
METROPOLITAN AREA PLANNING
DEPARTMENT
CITY HALL - 10TH FLOOR
466 NORTH MAIN
WICHITA, KANSAS 67202
PH: (316) 288-4421
CONTACT: DONNA GOLTRY

CIVIL ENGINEERS
SMC CONSULTING ENGINEERS, P.C.
TERENCE L. HAYNES, P.E.
815 WEST MAIN ST.
OKLAHOMA CITY, OK 73106
PH: (405) 232-7715
FAX: (405) 232-7899

TELEPHONE COMPANY
SOUTHWESTERN BELL
154 NORTH BROADWAY, ROOM 210
WICHITA, KS 67202
PH: (316) 288-2245
CONTACT: BOB ALLEY



PROJECT LOCATION

APPROVED AS NOTED
BY CITY ENGINEER OF WICHITA

DRIVEWAY APPROACHES _____
PAVING VRH 3/29/07
TRAFFIC SIGNALS PDG 3/29/07

NOTE TO CONTRACTOR

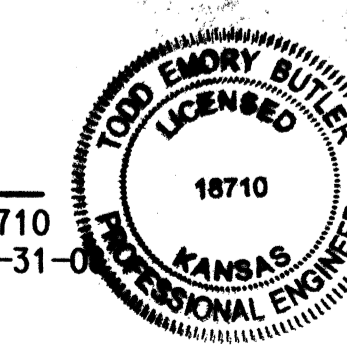
INSPECTION AND TESTING FOR THIS PROJECT IS TO BE PROVIDED BY A LICENSED CONSULTING ENGINEERING FIRM CONTRACTED BY THE OWNER/DEVELOPER. SAID INSPECTION TO BE IN ACCORDANCE WITH THE CITY OF WICHITA STANDARD CONSTRUCTION ENGINEERING PRACTICES AND CERTIFIED BY A LICENSED PROFESSIONAL ENGINEER. NO WORK SHALL BE PERFORMED IN DEDICATED EASEMENTS OR PUBLIC RIGHT-OF-WAY BY THE CONTRACTOR UNTIL SUCH INSPECTION IS ARRANGED FOR AND REQUIRED BONDS HAVE BEEN SUBMITTED TO AND APPROVED BY THE CITY. NOR SHALL ANY WORK BE COMMENCED IN DEDICATED EASEMENTS OR PUBLIC RIGHT-OF-WAY WITHOUT WRITTEN AUTHORIZATION BY THE CITY ENGINEER. IMPROVEMENTS PERFORMED UNDER THIS PROJECT SHALL NOT BE ACCEPTED BY THE CITY UNTIL ALL APPLICABLE DOCUMENTATION HAS BEEN SUBMITTED TO THE CITY ENGINEER. THIS MAY INCLUDE: RECORD DRAWINGS, INSPECTION LOGS, TEST DOCUMENTATION, TV TAPES, AND A CERTIFICATE OF COMPLETION. THE ABOVE SHALL BE PERFORMED BY THE CONSULTING FIRM CONTRACTED TO INSPECT THIS PROJECT.

As Built Plans:

CONTRACTOR: La Farge & PSE
INSPECTOR: Larry Gann, K E Miller Engineering
.PDF by: NWS, 11-29-07

MARCH 2007

PLANS PREPARED BY
TRAFFIC ENGINEERING CONSULTANTS, INC.
OKLAHOMA CITY, OK

TRAFFIC ENGINEERING CONSULTANTS

 Todd E. Butler
 TODD E. BUTLER, P.E. # 18710
 C.A. # E-1150, RENEWAL 12-31-07
 DATE 3-28-07

6990 S. Western, Suite 300 - Oklahoma City, OK 73139, Ph: 406-720-7721, Fax: 406-720-9648, Web: www.tecokc.com

SEDGWICK COUNTY

TRAFFIC ENGINEERING - P.E.

03/28/07 F:\CAD\1-563\111e.dgn