

- CONCRETE
- ASPHALT PAVEMENT
- PAVEMENT REMOVAL

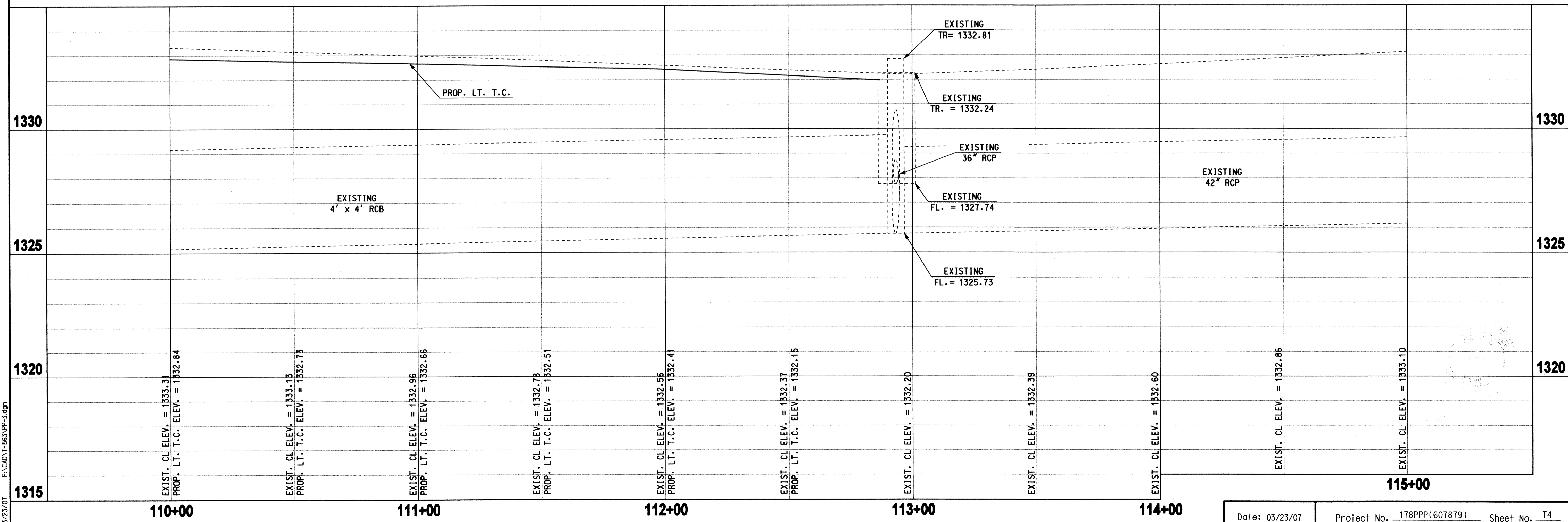
T
E
C

TRAFFIC
ENGINEERING
CONSULTANTS

Todd E. Butler
TODD E. BUTLER, P.E. # 18710
C.A. # E-1150, RENEWAL 12-31

9-26-07
DATE

6800 S. Western, Suite 300 - Oklahoma City, OK 73139, Ph: 406-728-7721, Fax: 406-728-9848, Web: www.tecokc.com



03/23/07 FACADVT-563/PP-3.dgn