

FHWA REGION NO.	STATE	PROJECT NO.	YEAR	SHEET NO.	TOTAL SHEETS
7	KANSAS	54-87-K-6657-01	2002	2	1122

**VOLUME I**

- 1 Title Sheet
- 2 Index of Sheets
- 3-6 Typical Section - Mainline
- 7-11 Typical Section - Sideroads
- 12 Foundation Treatment and Compaction of Earthwork
- 13-14 Superelevation and Cross-slope Transition Diagrams
- 15 General Notes
- 16-63 Plan, Geometric Coordinate, and Profile Sheets (US-54)
- 64-69 Plan and Profile Sheets (Maize Road)
- 70-75 Plan and Profile Sheets (Tyler Road)
- 76-81 Ramp Profiles
- 82-92 Intersection Details
- 93-116 Paving Plans
- 117-126 Concrete Bridge Approach Pavement Details
- 127-134 Pavement Details
- 135-146 Inlet and Manhole Details
- 147 Edge Drain Details (Deleted)
- 148-150 Headwall Details
- 151-162 Storm Sewer Plans
- 163-180 Storm Sewer Profiles
- 181-195 Storm Sewer Schedules
- 196-227 Waterline Plans, Profiles, and Details
- 228-233 Concrete Safety Barrier Details
- 234-236 QuadGuard Details

**VOLUME II**

- 237 Index of Sheets
- 238 Cast in Place Retaining Walls General Notes
- 238A Planter Wall Details
- 239 Cast-in-place Retaining Walls Architectural Details
- 240-250 Retaining Wall and Planter Plans (Cast-In-Place)
- 251 Planter Wall Handrail Details
- 252-270 Retaining Wall and Planter Elevations (Cast-In-Place)
- 271-364 Retaining Wall and Planter Details (Cast-In-Place)
- 365-368 Retaining Wall #9 Details
- 369-374 Retaining Wall #10 Details
- 375-376 MSE Retaining Wall General Notes
- 377-386 MSE Retaining Wall Plans and Profiles
- 387 Metal End Section
- 388 Concrete End Sections
- 389-397 2-2.4x0.9 RCB Details (Sta 14+443.483)
- 398-399 1.8x0.9 RFB Details (Sta 15+407.000)
- 400-410 2.4x1.8 RFB Details (Sta 17+090.000)
- 411-417 3.4x2.4 RFB Details (Sta .17+121.754 to 17+420)
- 418 RCB Transition Details (3.4X2.4 to 3.0x2.1)
- 419-425 3.0x2.1RCB Details (Sta 17+423 to 17+776)
- 426-427 2.1x1.2 RCB Details (Maize Sta. 4+146)
- 428-429 2.1x1.2 RCB Details (Tyler Sta. 5+311)
- 430-433 RCB Standard Details

**VOLUME III**

- 434 Index of Sheets
- 435-476 Bridge No. 54-87-19.05 (489) W.B. & Bridge No. 54-87-19.06(491) E.B.
- 477-498 Bridge No. 54-87-19.32(495) F.W.B.
- 499-531 Bridge No. 54-87-19.30(493) E.B. & Bridge No. 54-87-19.31(494) W.B.
- 532-564 Bridge No. 54-87-19.29(492) F.E.B.
- 565-606 Bridge No. 54-87-20.13(496) W.B. & Bridge No. 54-87-20.12(497) E.B.
- 607-611 Bridge Standards
- 612-623 Summary of Quantities
- 624 Earthwork Balances
- 625 Recapitulation of Quantities
- 626-631 Temporary Project Water Pollution Control (Soil Erosion)
- 632-654 Lighting Plans and Details
- 655-668 Traffic Signals

**VOLUME IV**

- 669 Index of Sheets
- 670-792 Signing and Pavement Marking
- 793-794 Construction Sequence
- 795-823 Traffic Control
- 823A Traffic Control
- 824-846 Traffic Control
- 847-894 Landscaping and Irrigation Plans and Details
- 894A Wetland Mitigation Plan
- 895-896 Drainage Maps

**VOLUME V**

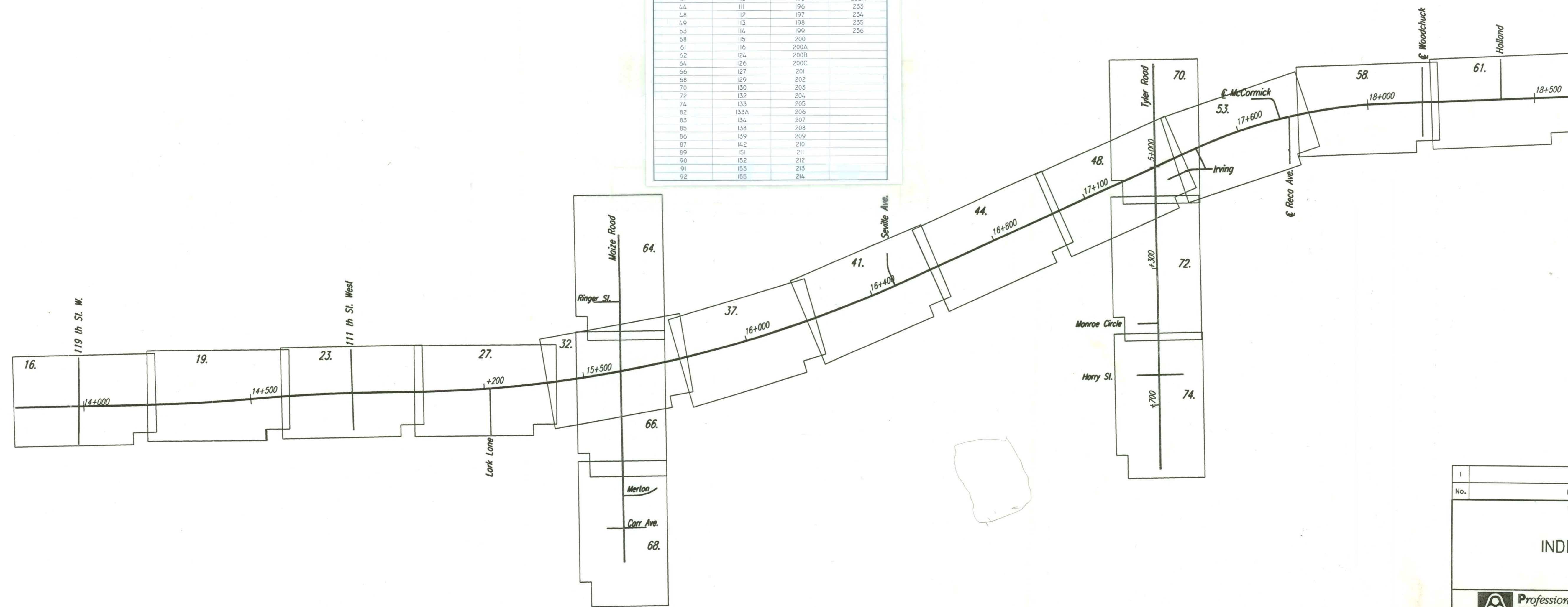
- 897 Index of Sheets
- 898-1048 Cross Sections - Mainline and Frontage Roads
- 1049-1060 Cross Sections - Cowskin
- 1061-1081 Cross Sections - Maize Road
- 1082-1106 Cross Sections - Tyler Road
- 1107-1110 Cross Sections - Woodchuck
- 1111-1114 Cross Sections - Seville
- 1115 Cross Sections - Lark
- 1116 Cross Sections - Irving
- 1117-1118 Cross Sections - Holland
- 1119-1120 Cross Sections - Channel Change at Sta. 14+425
- 1121-1122 Cross Sections - Channel Change at Sta. 17+090

DATE	
BY	
REFERENCES NOTED	
REFERENCES CHECKED	

**SHEET INDEX FOR RECORD DRAWING EDITS**

WEST KELLOGG FREEWAY  
MAIZE & TYLER ROAD INTERCHANGES PROJECT  
CITY OF WICHITA PROJECT NUMBER: 472-83533

VOLUME I			
SHEET #			
2A	93	156	215
3	94	161	216
4	95	162	217R
5	96	181	218
6	97	182	219
10	98	183	220
12	99	184	221
15	100	185	222
15A	101	186	223
16	102	187	224
19	103	188	225
23	104	189	226
24	105	190	227
27	106	191	228
32	107	192	229
33	108	193	230
37	109	194	231
41	110	195	232A
44	111	196	233
48	112	197	234
49	113	198	235
53	114	199	236
58	115	200	
61	116	200A	
62	124	200B	
64	126	200C	
66	127	201	
68	129	202	
70	130	203	
72	132	204	
74	133	205	
82	133A	206	
83	134	207	
85	138	208	
86	139	209	
87	142	210	
89	151	211	
90	152	212	
91	153	213	
92	155	214	



DSNR: MDH OPER: JGP SCALE: 1:1  
 I:/1997/97362/INDEX.DGN 11-23-1999 7:46:30 LAST REV: BY:

I	Revisions	By	Date
No.			
<b>CITY OF WICHITA</b>			
<b>INDEX OF SHEETS</b>			
SEDGWICK COUNTY			
<b>Professional Engineering Consultants, P.A.</b> <small>303 S. TOPSKA • WICHITA, KANSAS 67202          316-262-2691 • FAX 316-262-3003</small>			
Designed by	WDH	Checked by	
Drawn by	JGP	Date	Apr 11, 2002
		Job No.	97362