

FHWA REGION NO.	STATE	PROJECT NO.	YEAR	SHEET NO.	TOTAL SHEETS
7	KANSAS	54-87 K-6657-01	2002	16	1122

Curve Data (C7)
 P.I. Sta. 14+338.068 Bk.=
 P.I. Sta. 14+337.932 Ahd.
 $\Delta=3^{\circ} 56' 43.7''$
 $R=5000.000$ m
 $T=172.221$ m
 $L=344.306$ m
 $E=2.965$ m
 $S.E.=NC$

DATE	BY
REFERENCES NOTED	REFERENCES CHECKED

NOTE:
 Record Drawing information for ADDITIONAL and REVISED 'Drive Entrances' are ONLY presented on "Kellogg, Maize Road or Tyler Road Plan" sheets...NOT on "Geometric Coordinate Layout" or "Paving Plan" sheets.

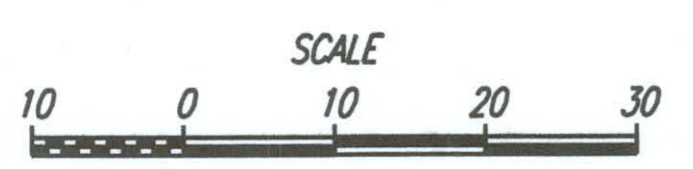
LEGEND

- Pavement Removal
- Pavement Milling & Bituminous Overlay
- Concrete Pavement ①
- Bituminous Pavement ②
- Light Type Surfacing
- Light Stone Riprap
- Proposed Storm Sewer
- Existing Utilities
- Proposed Relocated Utilities

- ① Concrete shoulders, curb & gutter, and driveways not shaded. See Driveway Summary of Quantities for pavement type.
- ② May include areas with Bituminous Overlay on Conc. Base. See Paving Plans & Typ. Sections.

Note: R/W callouts on Kellogg are to the Future and/or Proposed, and not Existing Traveled way.

UTILITIES
 Power - K G & E
 Telephone - Southwestern Bell
 Gas - Kansas Gas Service
 Cable TV - Cox Communications
 Water - City of Goddard Water Dept.
 Pipeline - KOCH Industries
 Water (Proposed) - City of Wichita



PLAN: Lat. & Long. (meters)

PROFILE: Horiz. same as above, Vert.

Note: These plans are prepared in System International Units (Metric).
 Conversion Factor: 1 Meter = 3.2808333 Feet

PROJECT SURVEY CONTROL

Datum Bench Mark: BM#9
 Chisled "+" cut on south concrete headwall on 4' x 4' RCB, 60.5' Rt. Sta. 442+59.5, Elev. 1414.91 on 1992 KDOT Proj. 54-87 K-3388-01. Elev. 431.265 NGVD 29, Located 923.3m W of 119th St. W 18.4m S of @ US-54.

P.O.T. Future @ Sta. 13+985.354=
 S.R. Sta. 3+000.000 119th St. W.
 1. Set #4 bar in exist. concrete pavement 0.480m W
 2. @ Conc. joint, 119th St. W. 3.630m S
 3. S. end concrete, N. end asphalt 23.260m N
 4. SE Cor. Sec. 25, T27S, R2W

P.C. Future @ Sta. 14+165.847 (C7)
 1. Set #4 bar w/cap in median between E. Bd. Lanes & Frontage Rd. 7.30m E
 2. PK Nail in N. Face Post 7.96m W
 3. PK Nail in N. Face Post 6.53m S
 4. PK Nail @ Frontage Rd. 0.5m S
 5. E-W Cable Fence

Fr. Rd. Lt. Sta. 13+999.815=
 @ 119th St. Sta. 2+964.668

Sta. 13+985.354=
 @ 119th St. Sta. 3+000.000

Fr. Rd. Rt. Sta. 13+965.637=
 @ 119th St. Sta. 3+035.336

E 1/4 Cor. Sec. 25, T27S, R2W
 1. Found 60d nail in 3/4" iron pipe over stone, @ 119th St. W 20.235m NE
 2. 60d nail/washer top fence line post 12.520m E
 3. 3 nails south face fence corner post 12.300m WSW
 4. 3 nails east face fence brace post 10.700m S
 5. Ctr. drive #1200 S 119th St. W

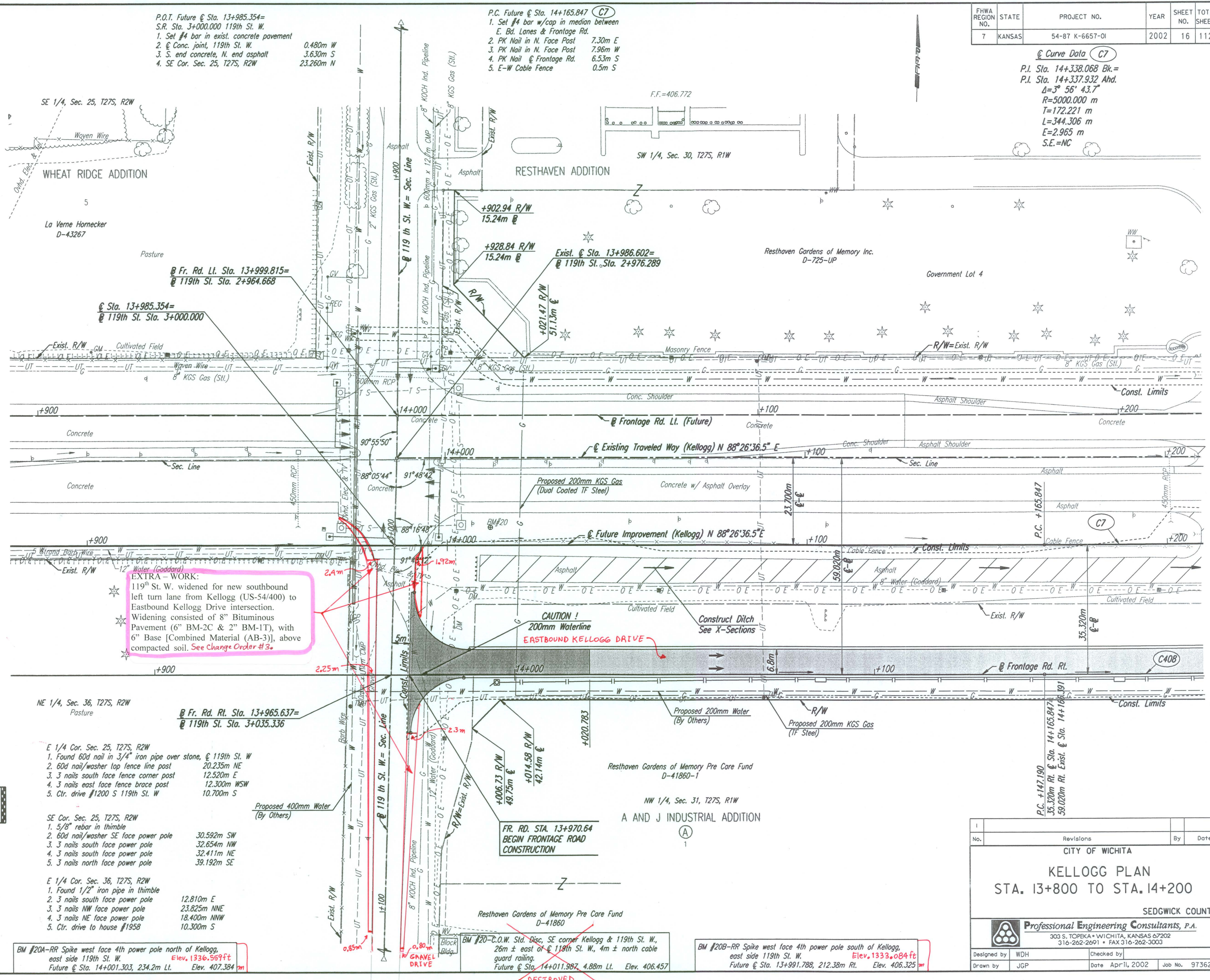
SE Cor. Sec. 25, T27S, R2W
 1. 5/8" rebar in thimble 30.592m SW
 2. 60d nail/washer SE face power pole 32.654m NW
 3. 3 nails south face power pole 32.411m NE
 4. 3 nails south face power pole 39.192m SE
 5. 3 nails north face power pole

E 1/4 Cor. Sec. 36, T27S, R2W
 1. Found 1/2" iron pipe in thimble 12.810m E
 2. 3 nails south face power pole 23.825m NNE
 3. 3 nails NW face power pole 18.400m NNW
 4. 3 nails NE face power pole 10.300m S
 5. Ctr. drive to house #1958

BM #20A-RR Spike west face 4th power pole north of Kellogg, east side 119th St. W. Elev. 1336.599ft
 Future @ Sta. 14+001.303, 234.2m Lt. Elev. 407.384m

FR. RD. STA. 13+970.64 BEGIN FRONTAGE ROAD CONSTRUCTION
 Future @ Sta. 14+011.982, 4.88m Lt. Elev. 406.457

BM #20B-RR Spike west face 4th power pole south of Kellogg, east side 119th St. W. Elev. 1333.084ft
 Future @ Sta. 13+991.718, 212.38m Rt. Elev. 406.325m



No.	Revisions	By	Date

CITY OF WICHITA
KELLOGG PLAN
 STA. 13+800 TO STA. 14+200
 SEDGWICK COUNTY

Professional Engineering Consultants, P.A.
 303 S. TOPEKA • WICHITA, KANSAS 67202
 316-262-2691 • FAX 316-262-3003

Designed by: WDH
 Drawn by: JGP
 Checked by: []
 Date: April, 2002
 Job No.: 97362

DSNR: WDH OPER: JGP SCALE: 1:500
 1/1997/97362/PL138.DGN 11-23-1999 7:24:23 LAST REV: 1-28-2002 BY: svb