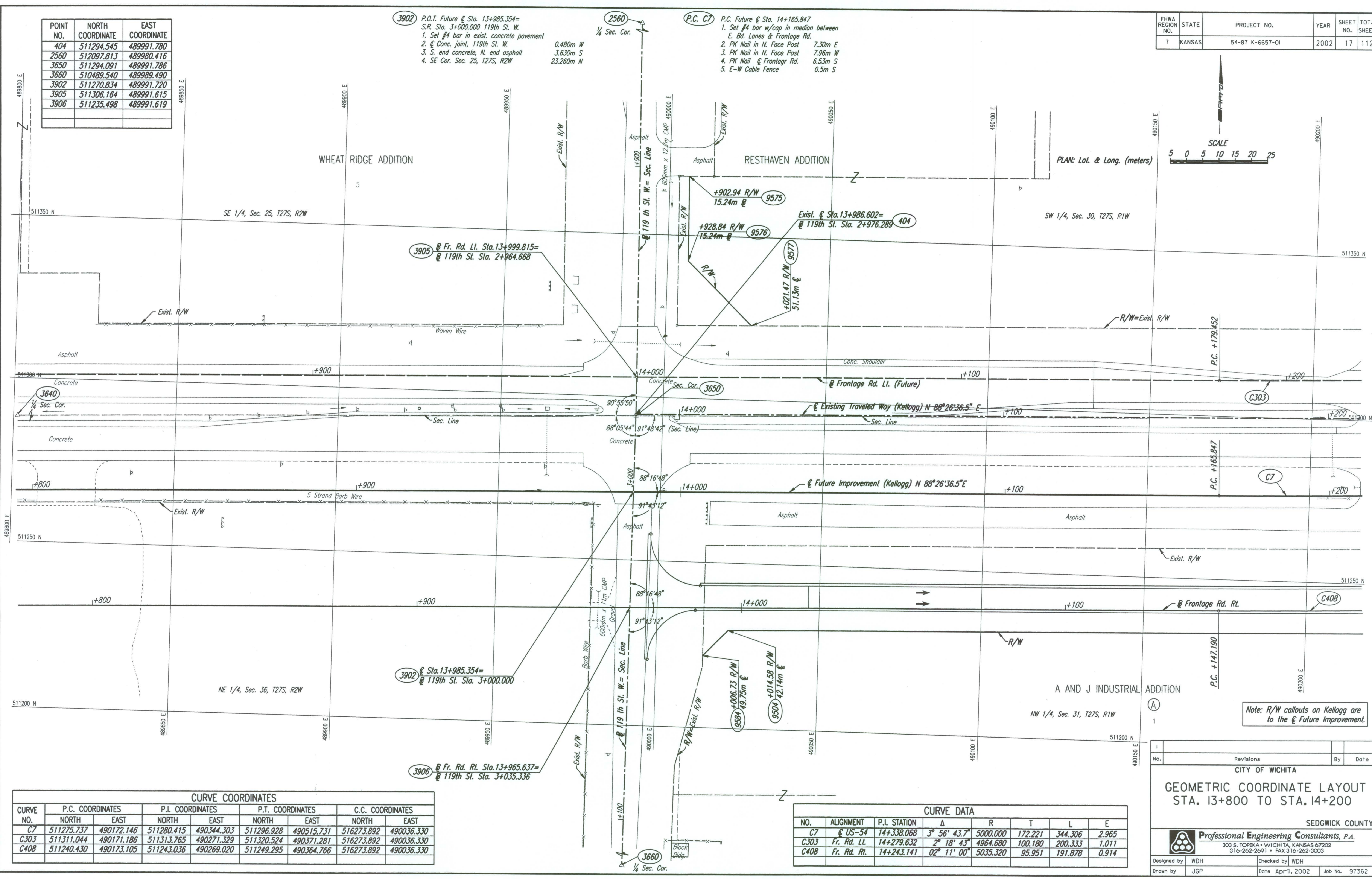
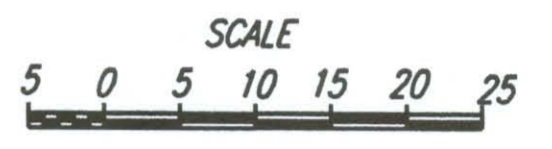


FHWA REGION NO.	STATE	PROJECT NO.	YEAR	SHEET NO.	TOTAL SHEETS
7	KANSAS	54-87 K-6657-01	2002	17	1122

POINT NO.	NORTH COORDINATE	EAST COORDINATE
404	511294.545	489991.780
2560	512097.813	489980.416
3650	511294.091	489991.786
3660	510489.540	489989.490
3902	511270.834	489991.720
3905	511306.164	489991.615
3906	511235.498	489991.619

- 3902** P.O.T. Future @ Sta. 13+985.354=  
S.R. Sta. 3+000.000 119th St. W.  
1. Set #4 bar in exist. concrete pavement  
2. @ Conc. joint, 119th St. W.  
3. S. end concrete, N. end asphalt  
4. SE Cor. Sec. 25, T27S, R2W
- 2560** 1/4 Sec. Cor.
- P.C. C7** P.C. Future @ Sta. 14+165.847  
1. Set #4 bar w/cap in median between  
E. Bd. Lanes & Frontage Rd.  
2. PK Nail in N. Face Post 7.30m E  
3. PK Nail in N. Face Post 7.96m W  
4. PK Nail @ Frontage Rd. 6.53m S  
5. E-W Cable Fence 0.5m S

DATE	
BY	
REFERENCES NOTED	
REFERENCES CHECKED	



CURVE NO.	P.C. COORDINATES		P.I. COORDINATES		P.T. COORDINATES		C.C. COORDINATES	
	NORTH	EAST	NORTH	EAST	NORTH	EAST	NORTH	EAST
C7	511275.737	490172.146	511280.415	490344.303	511296.928	490515.731	516273.892	490036.330
C303	511311.044	490171.186	511313.765	490271.329	511320.524	490371.281	516273.892	490036.330
C408	511240.430	490173.105	511243.036	490269.020	511249.295	490364.766	516273.892	490036.330

CURVE DATA							
NO.	ALIGNMENT	P.I. STATION	Δ	R	T	L	E
C7	@ US-54	14+338.068	3° 56' 43.7"	5000.000	172.221	344.306	2.965
C303	Fr. Rd. Lt.	14+279.632	2° 18' 43"	4964.680	100.180	200.333	1.011
C408	Fr. Rd. Lt.	14+243.141	02° 11' 00"	5035.320	95.951	191.878	0.914

Note: R/W callouts on Kellogg are to the @ Future Improvement.

No.	Revisions	By	Date

CITY OF WICHITA  
GEOMETRIC COORDINATE LAYOUT  
STA. 13+800 TO STA. 14+200

SEDGWICK COUNTY

Professional Engineering Consultants, P.A.  
303 S. TOPEKA • WICHITA, KANSAS 67202  
316-262-2691 • FAX 316-262-3003

Designed by	WDH	Checked by	WDH
Drawn by	JGP	Date	April 11, 2002
		Job No.	97362

DSNR: JPS OPER: JGP SCALE: 1:500  
 1/1997/97362/GEOMCOORD/G138.DGN 12-01-1999 10:13:57 LAST REV: 12-27-01 BY: JGP