

CURVE DATA							
NO.	ALIGNMENT	P.I. STATION	Δ	R	T	L	E
C7	US-54	14+338.068	3° 56' 43.7"	5000.000	172.221	344.306	2.965
C8	US-54	14+682.374	3° 56' 43.7"	5000.000	172.221	344.306	2.965
C306	Fr. Rd. Lt.	14+646.058	5° 31' 49"	606.800	29.306	58.567	0.707
C307	Fr. Rd. Lt.	14+515.099	0° 59' 38"	2511.200	21.780	43.559	0.094
C408	Fr. Rd. Rt.	14+243.141	2° 11' 00"	5035.320	95.951	191.878	0.914
C409	Fr. Rd. Rt.	14+358.457	5° 33' 00"	400.000	19.388	38.746	0.470
C410	Fr. Rd. Rt.	14+412.388	9° 42' 56"	406.800	34.573	68.981	1.467
C411	Fr. Rd. Rt.	14+598.318	3° 59' 02"	950.000	33.041	66.056	0.574

Curve Data (C7)  
 P.I. Future @ Sta. 14+338.068 Bk.=  
 P.I. Future @ Sta. 14+337.932 Ahd.  
 1. Set #4 bar in median between E. Bd. Lanes & Frontage Rd.  
 2. 60d nail in N. face post 8.41 m E  
 3. 60d nail in N. face post 6.77 m W  
 4. PK nail @ Frontage Rd. 6.73 m S  
 5. Cable fence E-W 0.4 m S

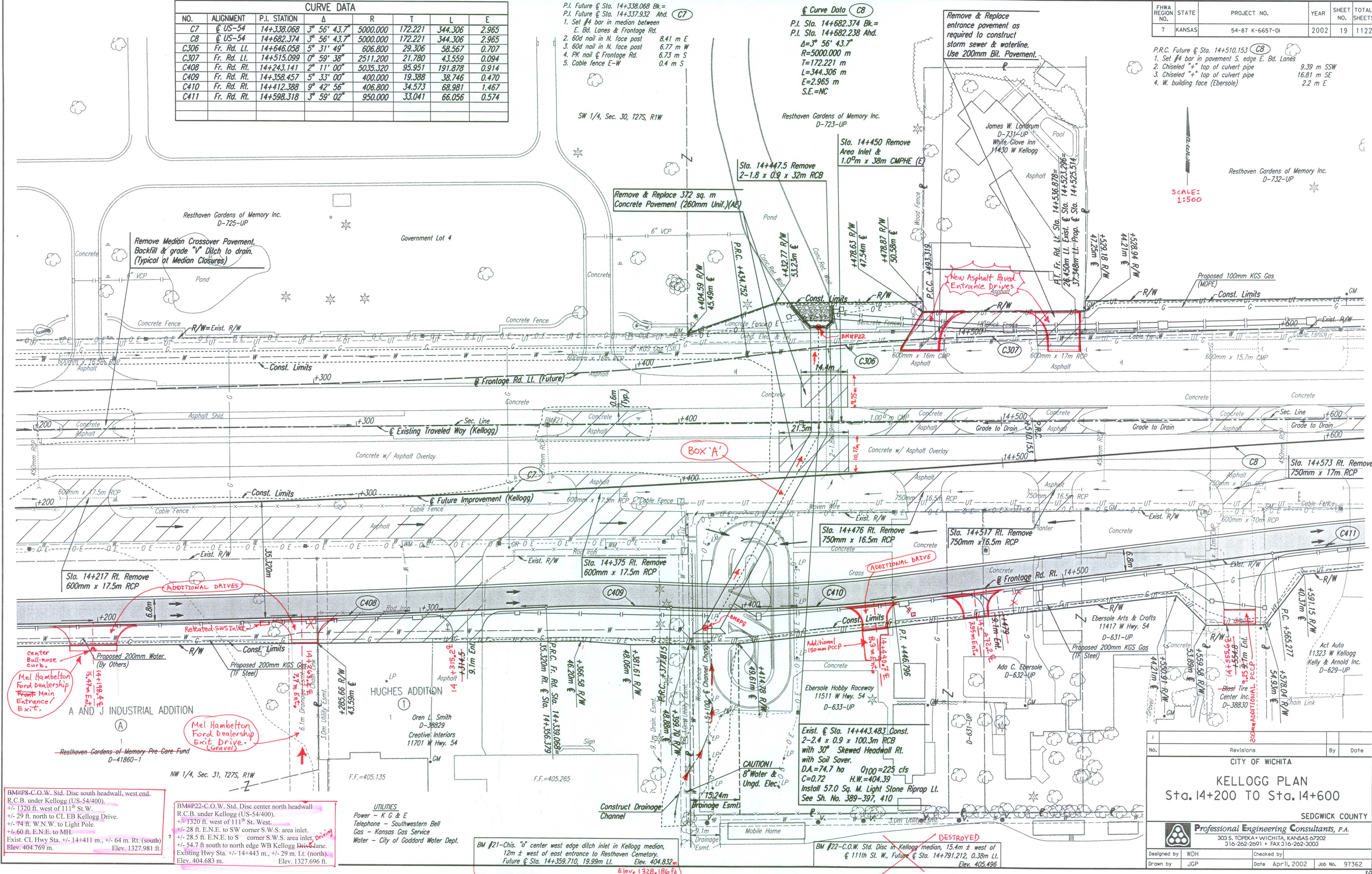
Curve Data (C8)  
 P.I. Sta. 14+682.374 Bk.=  
 P.I. Sta. 14+682.238 Ahd.  
 Δ=3° 56' 43.7"  
 R=5000.000 m  
 T=172.221 m  
 L=344.306 m  
 E=2.965 m  
 S.E.=NC

FHWA REGION NO.	STATE	PROJECT NO.	YEAR	SHEET NO.	TOTAL SHEETS
7	KANSAS	54-87 K-6657-OI	2002	19	1122

P.R.C. Future @ Sta. 14+510.153 (C8)  
 1. Set #4 bar in pavement S. edge E. Bd. Lanes 9.39 m SSW  
 2. Chiseled "+" top of culvert pipe 16.81 m SE  
 3. Chiseled "+" top of culvert pipe 2.2 m E  
 4. W. building face (Ebersole)

DATE	BY

REFERENCES NOTED	REFERENCES CHECKED



SCALE: 1:500

DSNR: WDH OPER: JGP SCALE: 1:500  
 i:/1997/97362/PL142.DGN 11-23-1999 7:20:41 LAST REV: 1-29-2002 BY: svb

BM#P8-C.O.W. Std. Disc south headwall, west end, R.C.B. under Kellogg (US-54/400).  
 +/- 1320 ft. west of 111<sup>th</sup> St. W.  
 +/- 29 ft. north to CL EB Kellogg Drive.  
 +/- 74 ft. W.N.W. to Light Pole.  
 +/- 60 ft. E.N.E. to MH.  
 Exist. CL Hwy Sta. +/- 14+411 m, +/- 64 m. Rt. (south) Elev. 404.769 m.  
 Exist. CL Hwy Sta. +/- 14+443 m, +/- 29 m. Lt. (north) Elev. 1327.981 ft.

BM#P22-C.O.W. Std. Disc center north headwall R.C.B. under Kellogg (US-54/400).  
 +/- 1320 ft. west of 111<sup>th</sup> St. West.  
 +/- 28 ft. E.N.E. to SW corner S.W.S. area inlet.  
 +/- 54.7 ft. south to north edge WB Kellogg Drive lane.  
 Existing Hwy Sta. +/- 14+443 m, +/- 29 m. Lt. (north) Elev. 404.683 m.  
 Elev. 1327.696 ft.

BM #21-Chis. "a" center west edge ditch inlet in Kellogg median, 12m ± west of east entrance to Resthaven Cemetery, Future @ Sta. 14+359.710, 19.99m Lt. Elev. 404.832 m.  
 Elev. 1328.186 ft

BM #22-C.O.W. Std. Disc in Kellogg median, 15.4m ± west of @ 111th St. W., Future @ Sta. 14+791.212, 0.38m Lt. Elev. 405.496

No.	Revisions	By	Date

CITY OF WICHITA  
**KELLOGG PLAN**  
 Sta. 14+200 TO Sta. 14+600  
 SEDGWICK COUNTY

**Professional Engineering Consultants, P.A.**  
 303 S. TOPEKA • WICHITA, KANSAS 67202  
 316-262-2691 • FAX 316-262-3003

Designed by	WDH	Checked by	
Drawn by	JGP	Date	April, 2002
		Job No.	97362