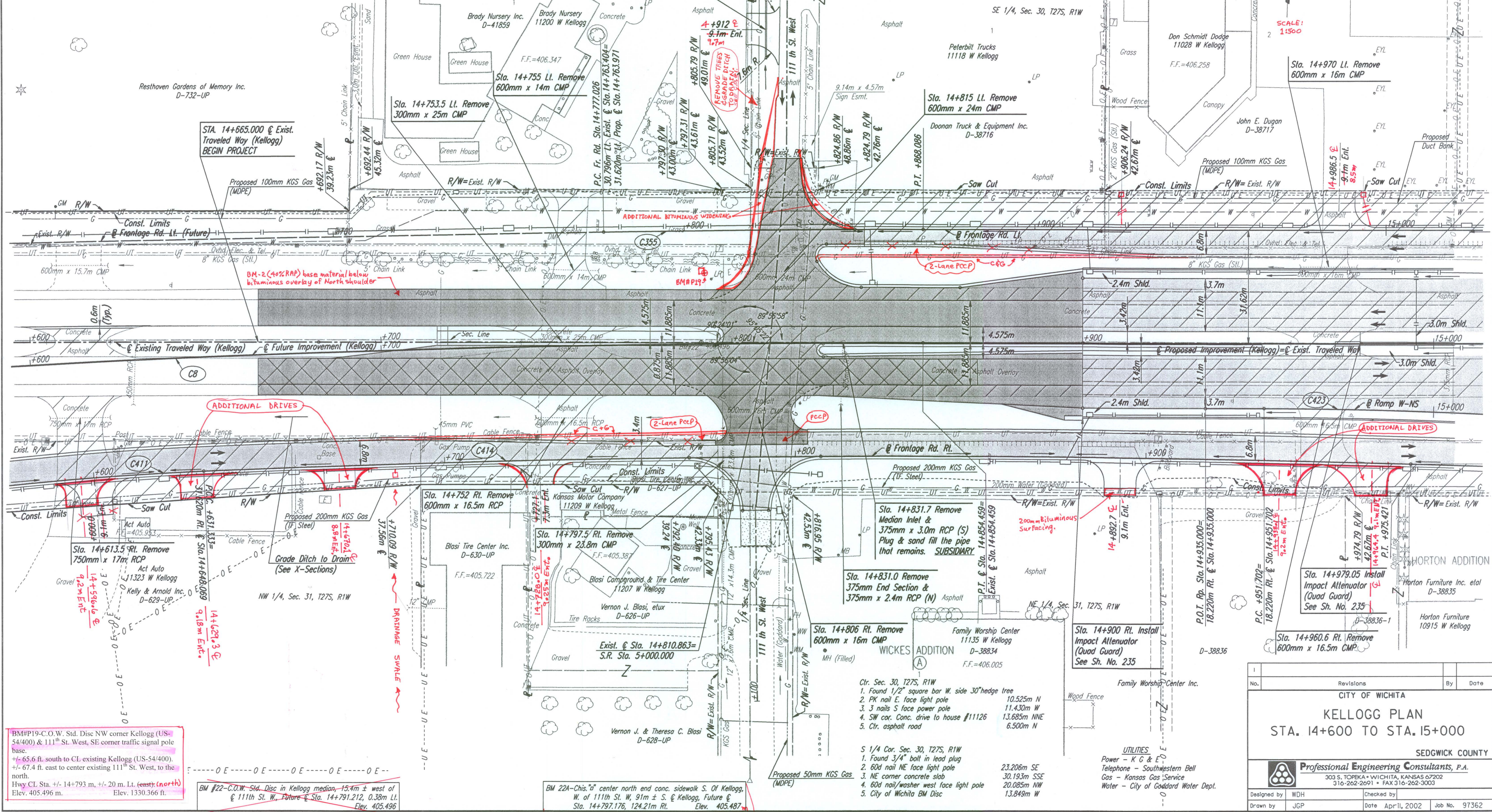


FHWA REGION NO.	STATE	PROJECT NO.	YEAR	SHEET NO.	TOTAL SHEETS
7	KANSAS	54-87 K-6657-01	2002	23	1122

CURVE DATA						
NO.	ALIGNMENT	P.I. STATION	Δ	R	T	L
CB	@ US-54	14+682.374	3° 56' 43.7"	5000.000	172.221	344.306
C355	Fr. Rd. Lt.	14+822.557	1° 02' 13"	5031.620	45.531	91.060
C411	Fr. Rd. Rt.	14+598.318	3° 59' 02"	950.000	33.041	66.056
C414	Fr. Rd. Rt.	14+803.446	3° 58' 05"	4968.380	172.113	344.089
C423	Ramp W-NS	14+984.182	2° 51' 45"	1300.000	32.480	64.946

P.I. @ Sta. 14+682.374 Bk. =
P.I. @ Sta. 14+682.238 Ahd. **CB**
1. Set #4 bar w/cap in median
2. S. edge concrete W. Bd. Lanes 4.72 m N
3. PK nail in edge of asphalt E. Bd. Lanes 6.675 m SE
4. PK nail in edge of asphalt E. Bd. Lanes 6.46 m SW

P.I. @ Sta. 14+854.459 **CB**
1. Set #4 bar w/cap in median 4.585 m N
2. S. edge concrete W. Bd. Lanes 7.07 m SE
3. PK nail in edge of asphalt E. Bd. Lanes 7.58 m SW
4. PK nail in edge of asphalt E. Bd. Lanes 49.41 m W



DATE	BY
REFERENCES NOTED	REFERENCES CHECKED

DSNR: WDH OPER: JGP SCALE: 1:500
 1/1997/97362/PL146-150.DGN 12-1-1999 7:19:49 LAST REV: 1-29-2002 BY: svb

BM#P19-C.O.W. Std. Disc NW corner Kellogg (US-54/400) & 111th St. West, SE corner traffic signal pole base.
 +/- 65.6 ft. south to CL existing Kellogg (US-54/400).
 +/- 67.4 ft. east to center existing 111th St. West, to the north.
 Hwy CL Sta. +/- 14+793 m, +/- 20 m. Lt. (east)(north)
 Elev. 405.496 m. Elev. 1330.366 ft.

BM #22-C.O.W. Std. Disc in Kellogg median, 15.4m ± west of
 @ 111th St. W., Future @ Sta. 14+791.212, 0.38m Lt.
 Elev. 405.496

BM 22A-Chis. "d" center north end conc. sidewalk S. Of Kellogg,
 W. of 111th St. W., 91m ± S. @ Kellogg, Future @
 Sta. 14+797.176, 124.21m Rt. Elev. 405.487
 Elev. 1330.335 ft

Cr. Sec. 30, T27S, R1W
 1. Found 1/2" square bar w. side 30" hedge tree
 10.525m N
 2. PK nail E. face light pole 11.430m W
 3. 3 nails S face power pole 13.685m NNE
 4. SW cor. Conc. drive to house #11126 6.500m N
 5. Cr. asphalt road

S 1/4 Cor. Sec. 30, T27S, R1W
 1. Found 3/4" bolt in lead plug 23.206m SE
 2. 60d nail NE face light pole 30.193m SSE
 3. NE corner concrete slab 20.085m NW
 4. 60d nail/washer west face light pole 13.849m W
 5. City of Wichita BM Disc

Revisions

No.	Revisions	By	Date

CITY OF WICHITA
KELLOGG PLAN
 STA. 14+600 TO STA. 15+000

SEDGWICK COUNTY
Professional Engineering Consultants, P.A.
 303 S. TOPEKA • WICHITA, KANSAS 67202
 316-262-2991 • FAX 316-262-3003

Designed by: WDH
 Drawn by: JGP
 Checked by: []
 Date: April, 2002
 Job No.: 97362

DESTROYED