

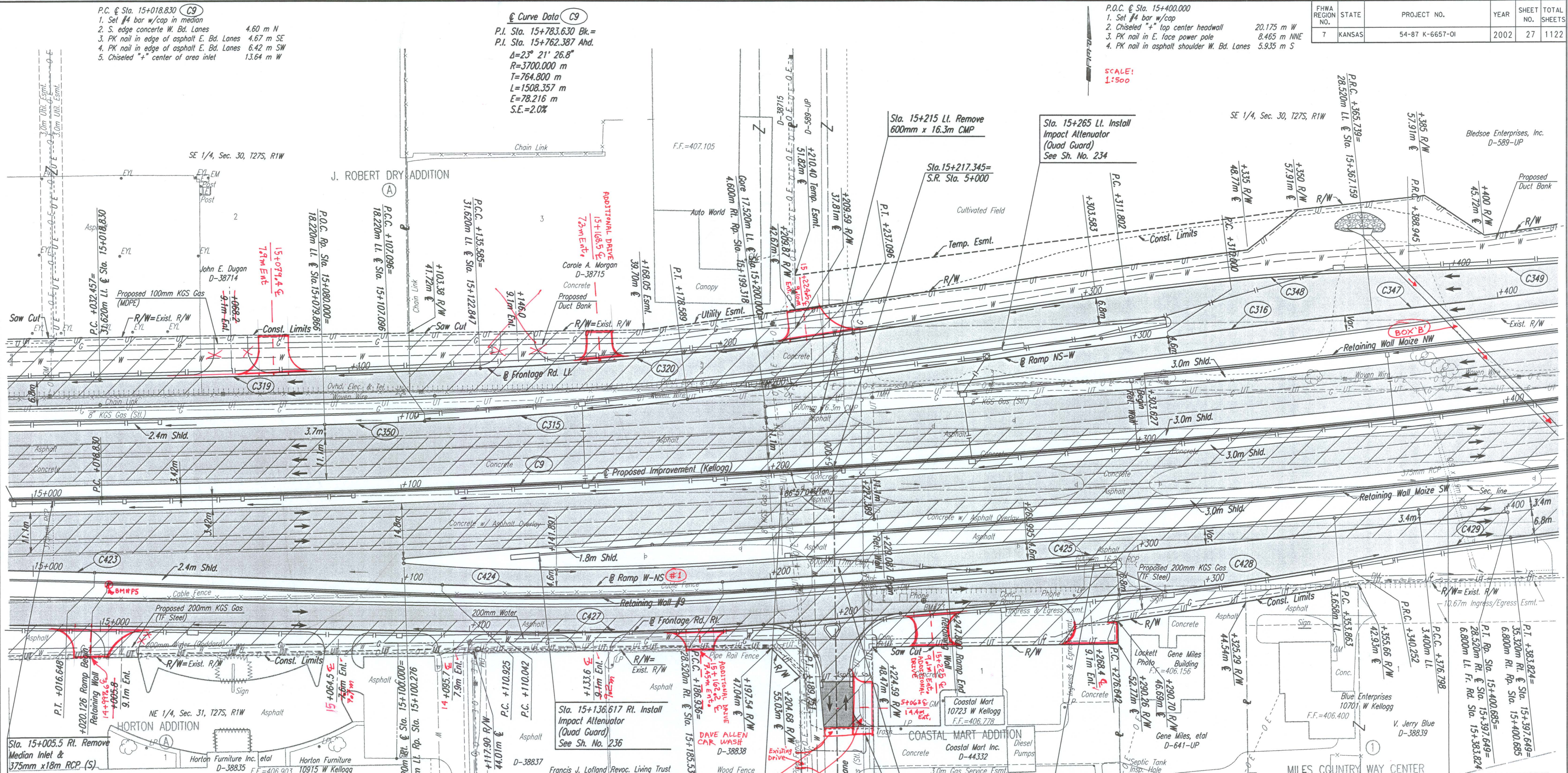
P.C. @ Sta. 15+018.830 (C9)
 1. Set #4 bar w/cap in median
 2. S. edge concrete W. Bd. Lanes 4.60 m N
 3. PK nail in edge of asphalt E. Bd. Lanes 4.67 m SE
 4. PK nail in edge of asphalt E. Bd. Lanes 6.42 m SW
 5. Chiseled "+" center of area inlet 13.64 m W

Curve Data (C9)
 P.I. Sta. 15+783.630 Bk.=
 P.I. Sta. 15+762.387 Ahd.
 A=23° 21' 26.8"
 R=3700.000 m
 T=764.800 m
 L=1508.357 m
 E=78.216 m
 S.E.=2.0%

P.C.C. @ Sta. 15+400.000
 1. Set #4 bar w/cap
 2. Chiseled "+" top center headwall 20.175 m W
 3. PK nail in E. face power pole 8.465 m NWE
 4. PK nail in asphalt shoulder W. Bd. Lanes 5.935 m S

FHWA REGION NO.	STATE	PROJECT NO.	YEAR	SHEET NO.	TOTAL SHEETS
7	KANSAS	54-87 K-6657-01	2002	27	1122

DATE	BY	REFERENCES NOTED	REFERENCES CHECKED



NO.	ALIGNMENT	P.I. STATION	Δ	R	T	L	E
C9	US-54	15+783.630	23° 21' 26.8"	3700.000	764.800	1508.357	78.216
C315	Ramp NS-W	15+142.866	5° 07' 13"	800.000	35.771	71.494	0.799
C316	Ramp NS-W	15+337.871	1° 05' 36"	2921.373	27.871	55.739	0.133
C319	Fr. Rd. Ll.	15+084.024	1° 36' 39"	3668.380	51.567	103.128	0.362
C320	Fr. Rd. Ll.	15+186.384	5° 48' 58"	1000.000	50.799	101.511	1.289
C347	Ramp NS-W	15+405.302	1° 14' 05"	3671.480	39.562	79.122	0.213
C348	Fr. Rd. Ll.	15+350.426	7° 17' 02"	606.800	38.623	77.143	1.228
C349	Fr. Rd. Ll.	15+422.941	6° 29' 09"	600.000	33.996	67.920	0.962
C350	Ramp NS-W	15+093.548	0° 25' 18"	3681.780	13.548	27.096	0.025
C423	Fr. Rd. Ll.	15+084.182	2° 51' 45"	1300.000	32.480	64.946	0.406
C424	Ramp W-NS	15+148.960	5° 26' 38"	800.000	38.034	76.011	0.904
C425	Ramp W-NS	15+293.840	3° 17' 05"	3728.520	106.904	213.749	1.532
C427	Fr. Rd. Ll.	15+149.929	5° 37' 25"	812.100	39.887	79.709	0.979
C428	Fr. Rd. Ll.	15+308.476	6° 00' 23"	606.800	31.834	63.610	0.834
C429	Fr. Rd. Ll.	15+362.048	4° 09' 39"	600.000	21.796	43.572	0.396

BM#P5-C.O.W. Std. Disc top, west end retaining wall, south EB Kellogg (US-54/400) outside barrier rail, in front of 10915 West Kellogg.
 +/- 25.3 ft. south to CL EB Kellogg Drive.
 +/- 42.6 ft. west to east end of EB overhead sign.
 Hwy Sta. +/- 15+021 m, +/- 24 m Rt. (South).
 Elev. 406.809 m. Elev. 1334.672 ft.

Sta. 15+203 Remove Median Inlet & 375mm x 18m RCP (S)

BM #23-Chis. "d" N. Side-aband. Light pole base, 23m ± E @ Lark Lane, 21m ± S. @ E. Bd. Kellogg, @ Sta. 15+239.387, 36.43m Rt. Elev. 406.774

Revisions

No.	Revisions	By	Date

CITY OF WICHITA
KELLOGG PLAN
STA. 15+000 TO STA. 15+400

SEDGWICK COUNTY
Professional Engineering Consultants, P.A.
 303 S. TOPEKA • WICHITA, KANSAS 67202
 316-262-2691 • FAX 316-262-3003

Designed by: WDH
 Drawn by: JGP
 Checked by:
 Date: April, 2002
 Job No.: 97362

DSNR: WDH OPER: JGP SCALE: 1:500
 1/1997/97362/PL150-154.DGN 11-05-1999 7:38:05 LAST REV: 1-30-2002 BY: svb