

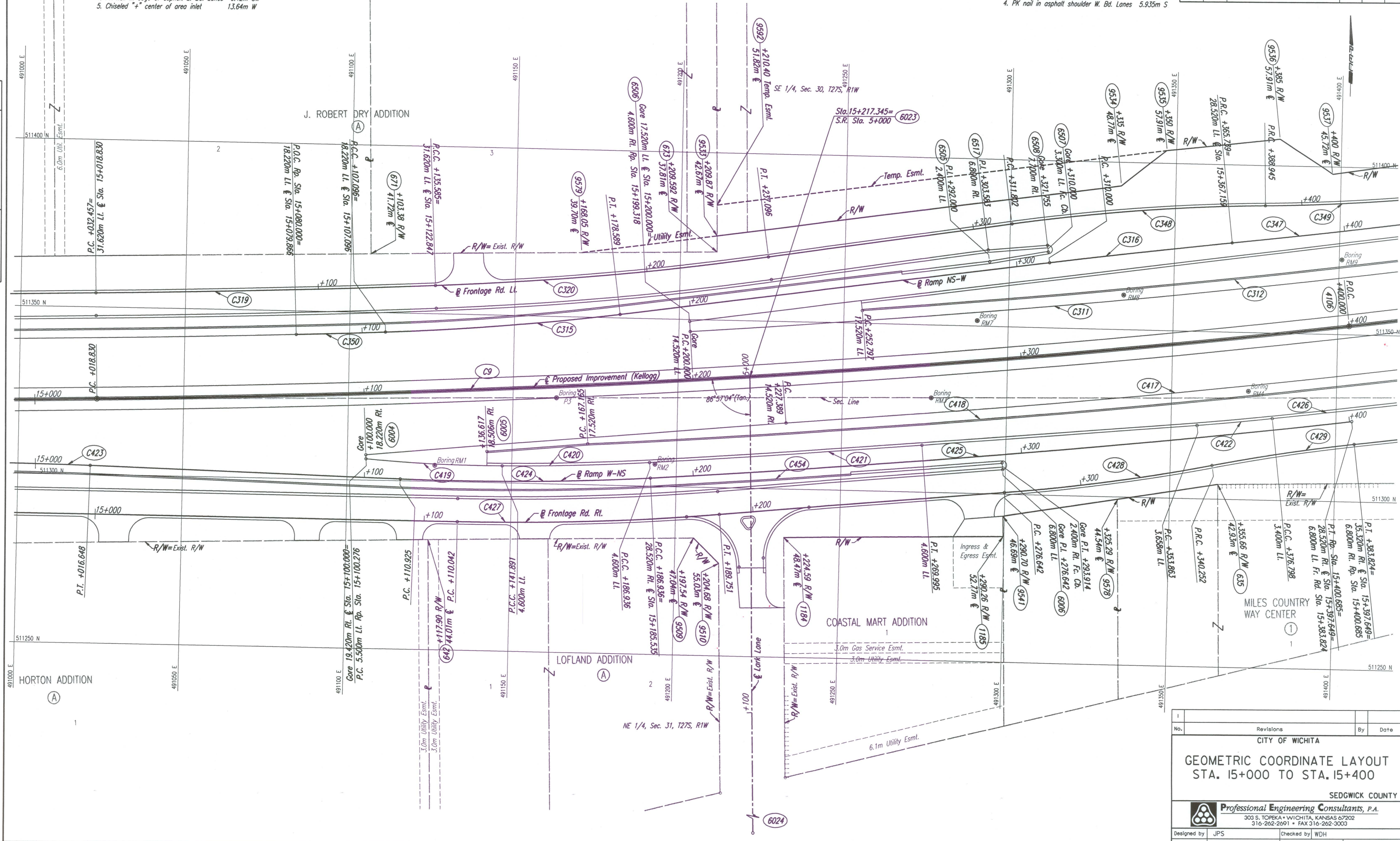
DSNR: JPS OPER: JGP SCALE: 1:500  
 I:/1997/97362/GEOMCOORD/G150.DGN 11-05-1999 7:27:25 LAST REV: 12-21-01 BY: JGP

DATE	
BY	
REFERENCES NOTED	
REFERENCES CHECKED	

**P.C. C9**  
 P.C. @ Sta. 15+018.830  
 1. Set #4 bar w/cap in median 4.60m N  
 2. S. edge concrete W. Bd. Lanes 4.67m SE  
 3. PK nail in edge of asphalt E. Bd. Lanes 6.42m SW  
 4. PK nail in edge of asphalt E. Bd. Lanes 6.42m SW  
 5. Chiseled "+" center of area inlet 13.64m W

P.O.C. @ Sta. 15+400.000 (4106)  
 1. Set #4 bar w/cap 20.175m W  
 2. Chiseled "+" top center headwall 8.465m NNE  
 3. PK nail in E. face power pole 5.935m S  
 4. PK nail in asphalt shoulder W. Bd. Lanes

FHWA REGION NO.	STATE	PROJECT NO.	YEAR	SHEET NO.	TOTAL SHEETS
7	KANSAS	54-87 K-6657-01	2002	28	1122



No.	Revisions	By	Date

**CITY OF WICHITA**

**GEOMETRIC COORDINATE LAYOUT  
 STA. 15+000 TO STA. 15+400**

SEDGWICK COUNTY

**Professional Engineering Consultants, P.A.**  
 303 S. TOPEKA • WICHITA, KANSAS 67202  
 316-262-2691 • FAX 316-262-3003

Designed by	JPS	Checked by	WDH
Drawn by	JGP	Date	April, 2002
		Job No.	97362