

FHWA REGION NO.	STATE	PROJECT NO.	YEAR	SHEET NO.	TOTAL SHEETS
7	KANSAS	54-87 K-6657-01	2002	32	1122

CURVE DATA						
NO.	ALIGNMENT	P.I. STATION	Δ	R	T	E
C9	US-54	15+783.630	23° 21' 26.8"	3700.000	764.800	1508.357
C279	Fr. Rd. Rt.	15+772.349	13° 16' 32"	800.000	93.097	185.361
C321	Fr. Rd. Lt.	15+787.208	10° 18' 06"	3664.680	330.343	658.905
C347	Ramp NS-W	15+405.302	1° 14' 05"	3671.480	39.562	79.122
C349	Fr. Rd. Lt.	15+422.941	6° 29' 09"	600.000	33.996	67.920

- P.O.T. @ Sta. 15+612.397=
 @ Maize Rd. Sta. 4+000.000
- Set #4 bar in concrete @ joint
 - SW Cor. Sec. 29, T27S, R1W 50.28 m S
 - Chiseled "+" top of curb 9.88 m E
 - Chiseled "+" top of curb 10.29 m E
 - N. end concrete, S. end asphalt 1.51 m N

- P.I. @ Sta. 15+783.630 (Bk.)=
 @ Sta. 15+762.387 (And.)
- Set #4 bar w/cap
 - N. rail railroad tracks
 - PK nail in W. face RR x sign
 - 60d nail in ctr. tracks
 - N. end, ctr. concrete drive at 10207 W. Harry 15.60 m ESE

BM#P16-C.O.W. Std. Disc. top North bridge rail, East end, WB Kellogg bridge (Br. #489) over Maize Road above bridge data plate.
 Hwy CL Sta +/- 15+665 m, +/- 18 m Lt. (north). Elev. 411.366 m.
 Elev. 1349.622 ft.

BM#P17-C.O.W. Std. Disc top South bridge rail, west end, EB Kellogg bridge (#491) over Maize Road above bridge data plate.
 Hwy CL Sta +/- 15+559 m, +/- 18 m Rt. (south). Elev. 411.994 m.
 Elev. 1351.682 ft.

SE 1/4, Sec. 30, T27S, R1W

BM#P25-C.O.W. Std. Disc. SW corner EB Kellogg Dr. & Maize Road, NE corner traffic signal pole base. +/- 164 ft. north to center of Kellogg (US-54/400). +/- 49 ft. east to center Maize Road.
 Hwy CL Sta +/- 15+590 m, +/- 50 m Rt. (south). Elev. 403.614 m.
 Elev. 1324.189 ft.

Sta. 15+612.397 Construct Br. No. 54-87-19.05(489) W.B. 32 000 - 42 000 - 32 000 Composite Steel Box Girder Spans 17 100 Roadway See Sh. Nos. 435-476

Sta. 15+596 Lt. Remove Curb Inlet & 900mm x 51m RCP (N)

Sta. 15+624 Lt. Remove Manhole & 450mm x 21m RCP (W)

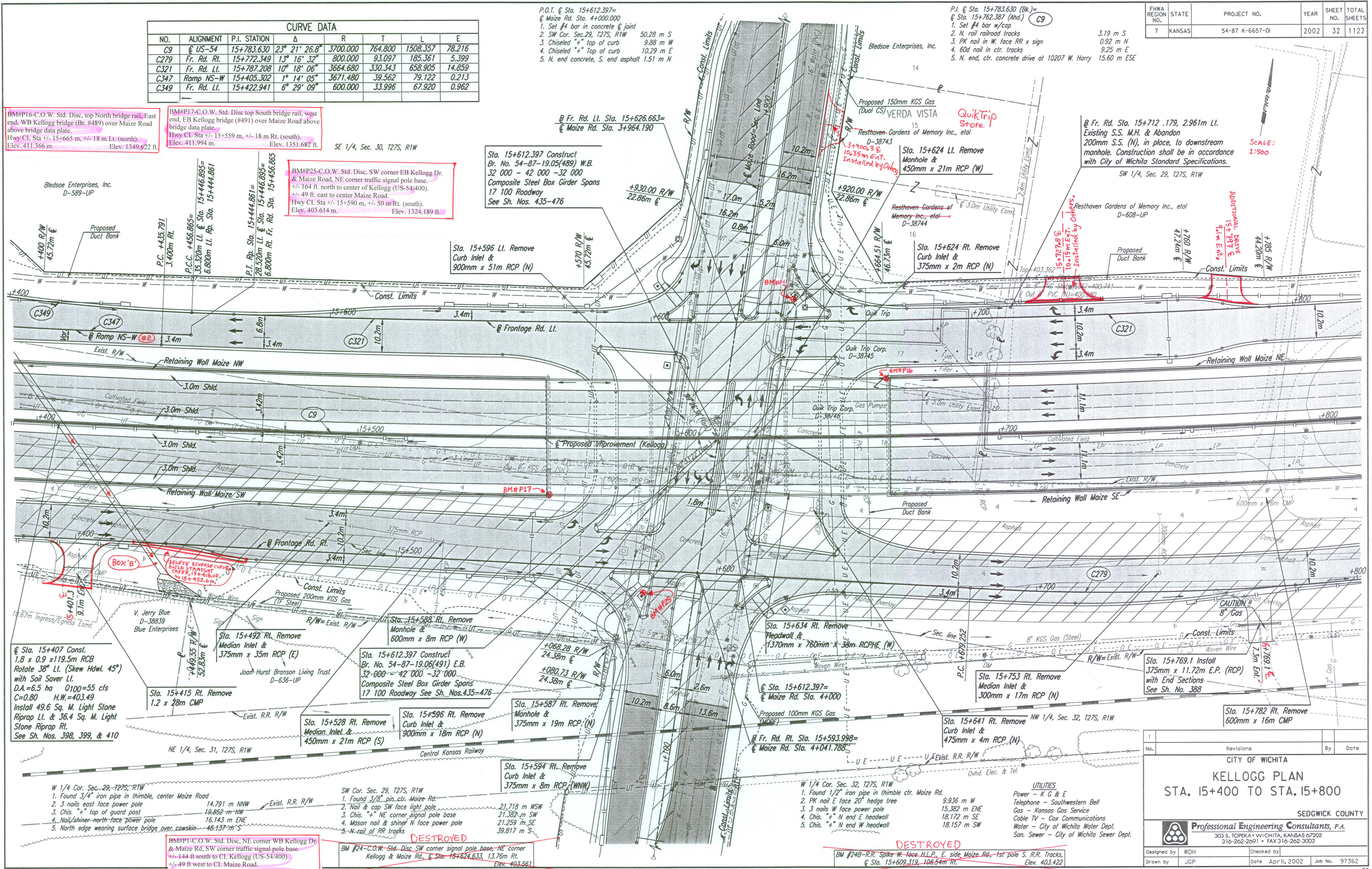
Sta. 15+624 Rt. Remove Curb Inlet & 375mm x 2m RCP (N)

@ Fr. Rd. Sta. 15+712.179, 2.961m Lt. Existing S.S. M.H. & Abandon 200mm S.S. (N), in place, to downstream manhole. Construction shall be in accordance with City of Wichita Standard Specifications.
 SW 1/4, Sec. 29, T27S, R1W

SCALE: 1:500

DATE	BY

REFERENCES NOTED	REFERENCES CHECKED



DSNR: WDH OPER: JGP SCALE: 1:500
 I:1997/97362/PL154-158.DGN 11-09-1999 8:49:44 LAST REV: 2-1-2002 BY: svb

@ Sta. 15+407 Const. 1.8 x 0.9 x 119.5m RCB Rotate 38° Lt. (Skew Hdwl. 45°) with Soil Saver Lt. D.A.=6.5 ha O100=55 cfs C=0.80 H.W.=403.49 Install 49.6 Sq. M. Light Stone Riprap Lt. & 36.4 Sq. M. Light Stone Riprap Rt. See Sh. Nos. 398, 399, & 410

Sta. 15+415 Rt. Remove 1.2 x 28m CMP

Sta. 15+492 Rt. Remove Median Inlet & 375mm x 35m RCP (E)

Sta. 15+588 Rt. Remove Manhole & 600mm x 8m RCP (W)

Sta. 15+612.397 Construct Br. No. 54-87-19.05(491) E.B. 32-000 - 42-000 - 32-000 Composite Steel Box Girder Spans 17 100 Roadway See Sh. Nos. 435-476

Sta. 15+528 Rt. Remove Median Inlet & 450mm x 21m RCP (S)

Sta. 15+596 Rt. Remove Curb Inlet & 900mm x 18m RCP (N)

Sta. 15+587 Rt. Remove Manhole & 375mm x 19m RCP (N)

Sta. 15+594 Rt. Remove Curb Inlet & 375mm x 8m RCP (W/NW)

Sta. 15+634 Rt. Remove Headwall & 1370mm x 760mm x 38m RCPHE (W)

@ Sta. 15+612.397=
 @ Maize Rd. Sta. 4+000

Sta. 15+753 Rt. Remove Median Inlet & 300mm x 17m RCP (N)

Sta. 15+641 Rt. Remove Curb Inlet & 475mm x 4m RCP (N)

Sta. 15+782 Rt. Remove 600mm x 16m CMP

No.	Revisions	By	Date

CITY OF WICHITA
KELLOGG PLAN
 STA. 15+400 TO STA. 15+800

SEDGWICK COUNTY

Professional Engineering Consultants, P.A.
 303 S. TOPEKA • WICHITA, KANSAS 67202
 316-262-2691 • FAX 316-262-3003

Designed by	WDH	Checked by	
Drawn by	JGP	Date	Apr 11, 2002
		Job No.	97362

BM#P1-C.O.W. Std. Disc. NE corner WB Kellogg Dr. & Maize Rd, SW corner traffic signal pole base. +/- 144 ft south to CL Kellogg (US-54/400). +/- 49 ft west to CL Maize Road.
 Hwy CL Sta +/- 15+636 m, +/- 44 m Lt. (north). Elev. 403.586 m.
 Elev. 1324.099 ft.

BM #24-C.O.W. Std. Disc. SW corner signal pole base, NE corner Kellogg & Maize Rd., @ Sta. 15+624.633, 13.76m Rt. Elev. 403.561

BM #24B-R.R. Spike W. face H.L.E., E. side Maize Rd., 1st pole S. R.R. Tracks, @ Sta. 15+609.319, 106.54m Rt. Elev. 403.422

DESTROYED

DESTROYED