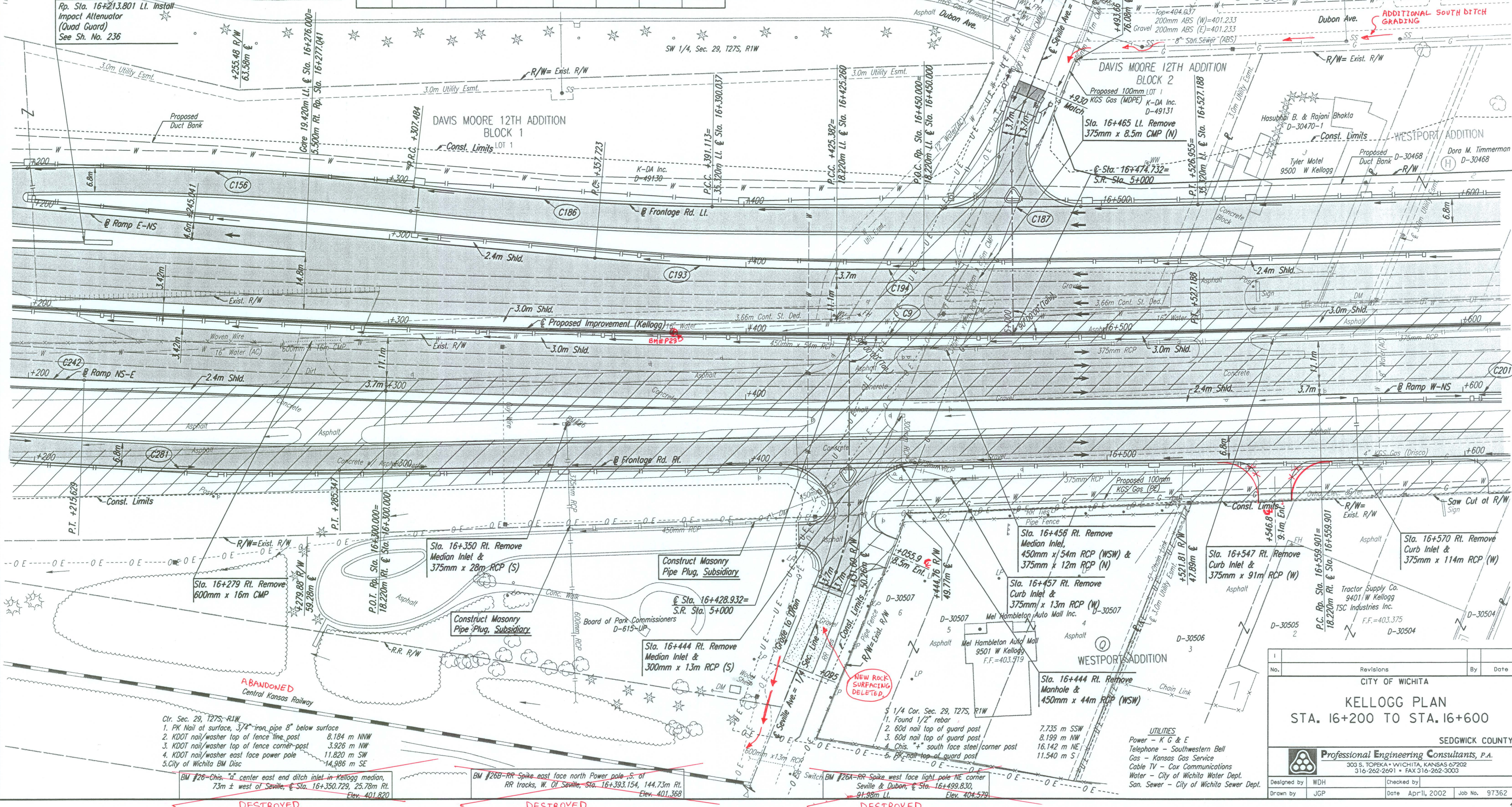


CURVE DATA							
NO.	ALIGNMENT	P.I. STATION	Δ	R	T	L	E
C9	US-54	15+783.630	23° 21' 26.8"	3700.000	764.800	1508.357	78.216
C156	Fr. Rd. Lt.	16+253.523	7° 40' 33"	806.800	54.124	108.086	1.813
C186	Fr. Rd. Lt.	16+349.337	5° 59' 22"	800.000	41.853	83.629	1.094
C187	Fr. Rd. Lt.	16+459.042	2° 07' 26"	3664.680	67.929	135.842	0.630
C193	Ramp E-NS	16+391.572	4° 50' 44"	800.000	33.849	67.659	0.716
C194	Ramp E-NS	16+437.691	0° 22' 59"	3681.780	12.309	24.618	0.021
C201	Ramp W-NS	16+609.870	2° 51' 45"	2000.000	49.969	99.917	0.624
C242	Ramp NS-E	16+203.452	0° 41' 52"	2000.000	12.178	24.355	0.037
C281	Fr. Rd. Rt.	16+187.612	11° 14' 08"	1000.000	98.365	196.100	4.826

BM#P23-C.O.W. Std. Disc top center Kellogg (US-54/400) concrete barrier rail @ WB Kellogg overhead sign base.
 +/- 236 ft. east to center Seville Avenue.
 Hwy CL Sta. +/- 16+380 m., +/- CL Kellogg (US-54).
 Elev. 404.623 m. Elev. 1327.501 ft.

DATE	
BY	
REFERENCES NOTED	
REFERENCES CHECKED	



- Ctr. Sec. 29, T27S, R1W
- PK Nail at surface, 3/4" iron pipe 8" below surface 8.184 m NNW
 - KDOT nail/washer top of fence line post 3.926 m NW
 - KDOT nail/washer top of fence corner post 11.820 m SW
 - KDOT nail/washer east face power pole 14.986 m SE
 - City of Wichita BM Disc

BM #26-Chis. "a" center east end ditch inlet in Kellogg median, 73m ± west of Seville, Sta. 16+350.729, 25.78m Rt. Elev. 401.820

BM #26B-RR Spike east face north Power pole S. of RR tracks, W. of Seville, Sta. 16+393.154, 144.73m Rt. Elev. 401.368

BM #26A-RR Spike west face light pole NE corner Seville & Dubon, Sta. 16+499.830, 91.98m Lt. Elev. 404.579

No.	Revisions	By	Date
CITY OF WICHITA			
KELLOGG PLAN			
STA. 16+200 TO STA. 16+600			
SEDGWICK COUNTY			
Professional Engineering Consultants, P.A. 303 S. TOPEKA • WICHITA, KANSAS 67202 316-262-2691 • FAX 316-262-3003			
Designed by	WDH	Checked by	
Drawn by	JGP	Date	Apr 11, 2002
		Job No.	97362

DSNR: WDH OPER: JGP SCALE: 1:500
 1/1997/97362/PL162-166.DGN 11-08-1999 15:41:21 LAST REV: 1-30-2002 BY: svb

DESTROYED

DESTROYED

DESTROYED