

CURVE DATA						
NO.	ALIGNMENT	P.I. STATION	Δ	R	T	L E
C102	Ramp NS-W	16+984.104	2° 51' 45"	1524.750	38.095	76.174 0.476
C105	Fr. Rd. Lt.	16+987.993	8° 06' 00"	606.800	42.963	85.783 1.519
C106	Fr. Rd. Lt.	17+058.255	5° 14' 15"	600.000	27.442	54.847 0.627

BM#P21-C.O.W. Std. Disc top south bridge rail, west end, EB Kellogg bridge (Br. #497) over Tyler Road. Hwy CL Sta +/- 17+268 m, +/- 18 m Lt. (south). Elev. 412.940 m. Elev. 1354.786 ft.

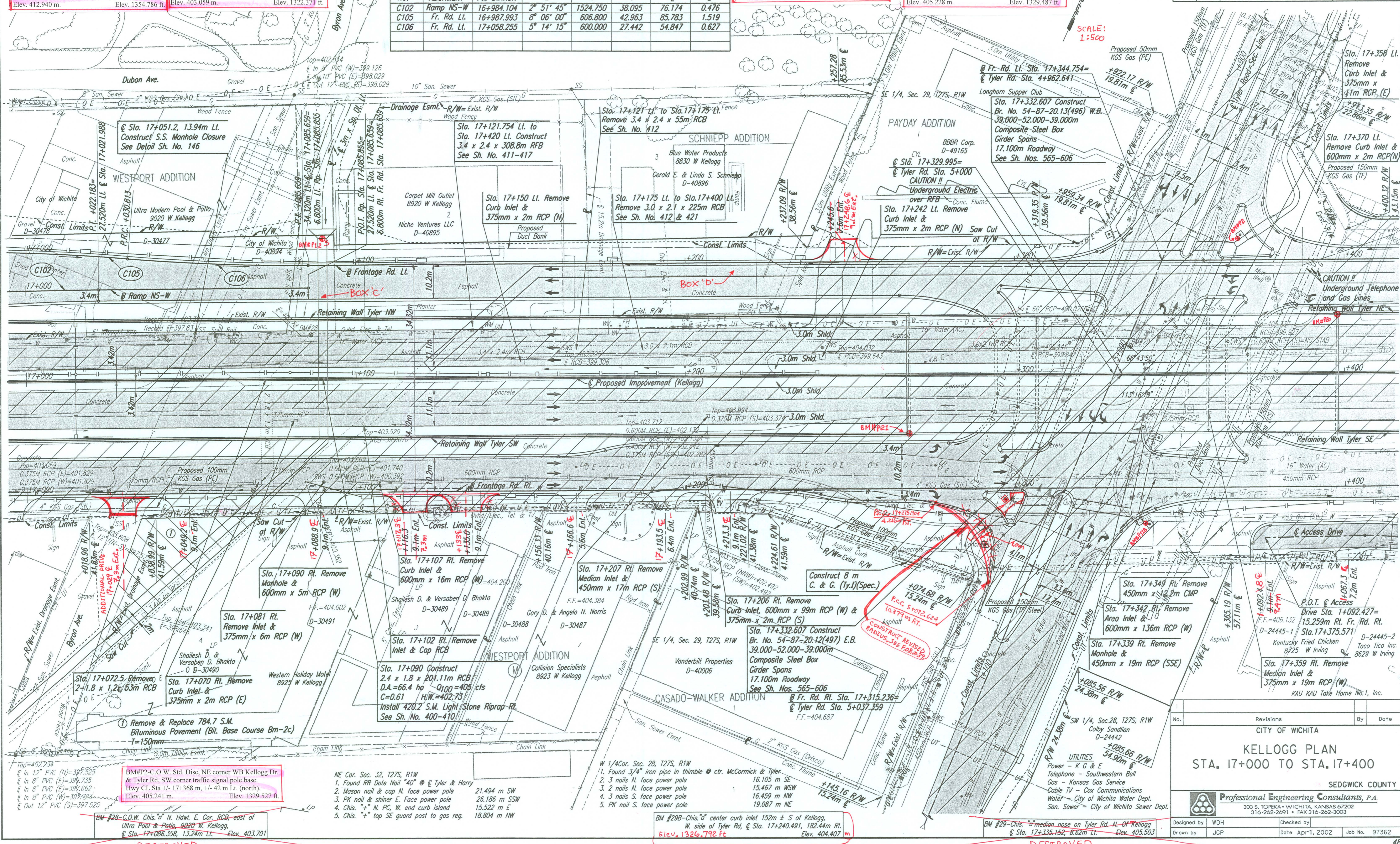
BM#P12-C.O.W. Std. Disc top north R.C.B. headwall, north end, EB Kellogg bridge (Br. #497) over Tyler Road. Hwy CL Sta +/- 17+090 m, +/- 42 m Lt. (north). Elev. 403.059 m. Elev. 1322.371 ft.

BM#P20-C.O.W. Std. Disc top north bridge rail, east end, WB Kellogg bridge (Br. #496) over Tyler Road. Hwy CL Sta +/- 17+397 m, +/- 18 m Lt. (north). Elev. 414.031 m. Elev. 1358.366 ft.

BM#P11B-C.O.W. Std. Disc, SE corner EB Kellogg Dr. & Tyler Rd, NW corner traffic signal pole base. Hwy CL Sta +/- 17+340 m, +/- 45 m Rt. (south). Elev. 405.228 m. Elev. 1329.487 ft.

SCALE: 1:500

DATE	
BY	
REFERENCES NOTED	
REFERENCES CHECKED	



DSNR: WDH OPER: JGP SCALE: 1:500
 I:1997/97362/PL170.DGN 3-01-2002 8:27:44 LAST REV:

BM#P2-C.O.W. Std. Disc, NE corner WB Kellogg Dr. & Tyler Rd, SW corner traffic signal pole base. Hwy CL Sta +/- 17+368 m, +/- 42 m Lt. (north). Elev. 405.241 m. Elev. 1329.527 ft.

BM#28-C.O.W. Chis. "4" N. Hdwl. E. Cor. RCB, east of Ultra Poor & Potts, 9020 W Kellogg, @ Sta. 17+086.358, 13.24m Lt. Elev. 403.701

- NE Cor. Sec. 32, T27S, R1W
1. Found RR Date Nail "40" @ Tyler & Harry 21.494 m SW
 2. Mason nail & cap N. face power pole 26.186 m SSW
 3. PK nail & shiner E. face power pole 15.522 m E
 4. Chis. "4" N. PC, W. end curb island 18.804 m NW
 5. Chis. "4" top SE guard post to gas reg.

BM#29B-Chis. "4" center curb inlet 152m ± S of Kellogg, W. side of Tyler Rd, @ Sta. 17+240.491, 182.44m Rt. Elev. 404.407

BM#29-Chis. "4" median nose on Tyler Rd. N. of Kellogg @ Sta. 17+335.152, 8.62m Lt. Elev. 405.503

No.	Revisions	By	Date

CITY OF WICHITA

KELLOGG PLAN
STA. 17+000 TO STA. 17+400

SEDGWICK COUNTY

Professional Engineering Consultants, P.A.
300 S. TOPEKA • WICHITA, KANSAS 67202
316-262-2691 • FAX 316-262-3003

Designed by: WDH
Checked by:
Drawn by: JGP
Date: Apr 11, 2002
Job No.: 97362

DESTROYED

DESTROYED