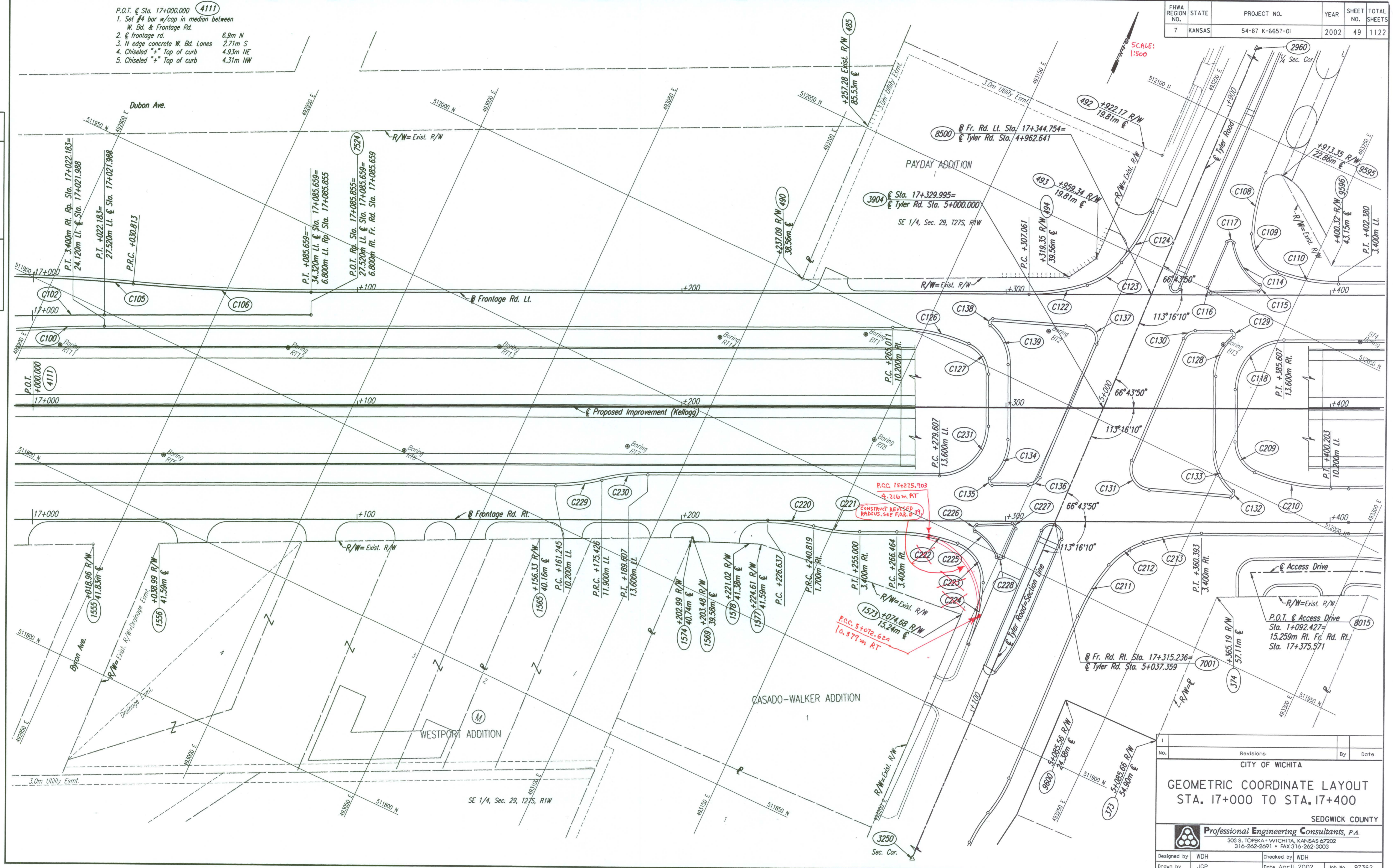


FHWA REGION NO.	STATE	PROJECT NO.	YEAR	SHEET NO.	TOTAL SHEETS
7	KANSAS	54-87 K-6657-01	2002	49	1122

- P.O.T. @ Sta. 17+000.000 (4111)
- Set #4 bar w/cap in median between W. Bd. & Frontage Rd. 6.9m N
 - Frontage rd. 2.71m S
 - N edge concrete W. Bd. Lanes 4.93m NE
 - Chiseled "+" Top of curb 4.31m NW
 - Chiseled "+" Top of curb 4.31m NW

DATE	BY

DSNR: JPS OPER. JGP SCALE: 1:500
 I:/1997/97362/GEOMCOORD/G170.DGN 11-19-1999 13:20:29 LAST REV: 12-26-01 BY: JGP



No.	Revisions	By	Date

CITY OF WICHITA

GEOMETRIC COORDINATE LAYOUT
 STA. 17+000 TO STA. 17+400

SEDGWICK COUNTY

Professional Engineering Consultants, P.A.
 303 S. TOPEKA • WICHITA, KANSAS 67202
 316-262-2691 • FAX 316-262-3003

Designed by	WDH	Checked by	WDH
Drawn by	JGP	Date	April 11, 2002
		Job No.	97362