

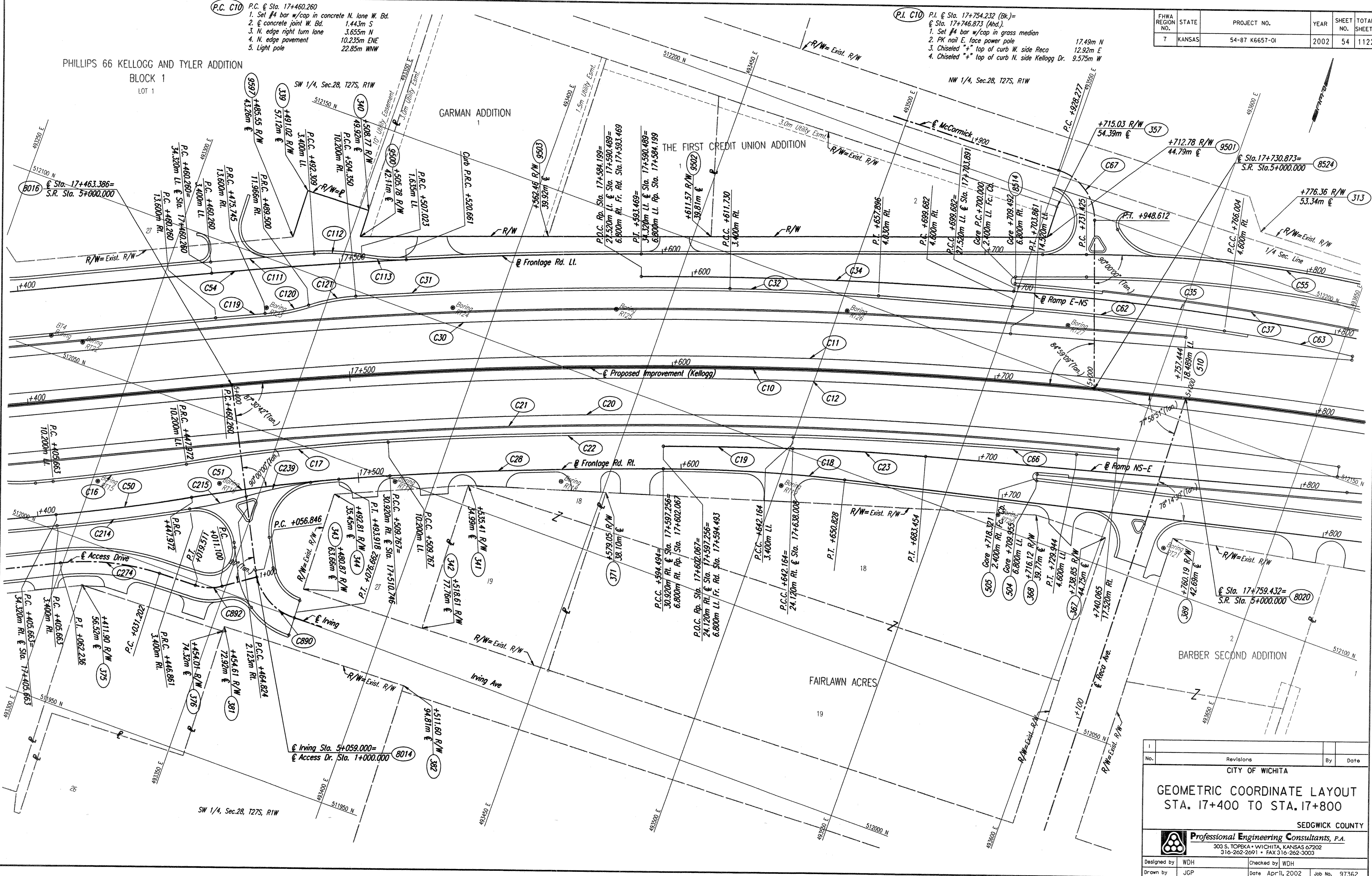
FHWA REGION NO.	STATE	PROJECT NO.	YEAR	SHEET NO.	TOTAL SHEETS
7	KANSAS	54-87 K6657-01	2002	54	1122

**P.C. C10**  
 P.C. @ Sta. 17+460.260  
 1. Set #4 bar w/cap in concrete N. lone W. Bd. 1.443m S  
 2. concrete joint W. Bd. 3.655m N  
 3. N. edge right turn lone 10.235m ENE  
 4. N. edge pavement 22.85m WNW  
 5. Light pole

**P.I. C10**  
 P.I. @ Sta. 17+754.232 (Bk.)=  
 @ Sta. 17+746.873 (Ahd.)  
 1. Set #4 bar w/cap in grass median 17.49m N  
 2. PK nail E. face power pole 12.92m E  
 3. Chiseled "+" top of curb W. side Reco 9.575m W  
 4. Chiseled "+" top of curb N. side Kellogg Dr.

DATE	
BY	
REFERENCES NOTED	
REFERENCES CHECKED	

DSNR: JPS OPER: JGP SCALE: 1:500  
 4/1997/97362/GEOMCOORD/G174.DGN 11-19-1999 13:25:28 LAST REV: 12-26-01 BY: JGP



No.	Revisions	By	Date
CITY OF WICHITA			
GEOMETRIC COORDINATE LAYOUT STA. 17+400 TO STA. 17+800			
SEDGWICK COUNTY			
<b>Professional Engineering Consultants, P.A.</b> 303 S. TOPEKA • WICHITA, KANSAS 67202 316-262-2691 • FAX 316-262-3003			
Designed by	WDH	Checked by	WDH
Drawn by	JGP	Date	April 11, 2002
		Job No.	97362