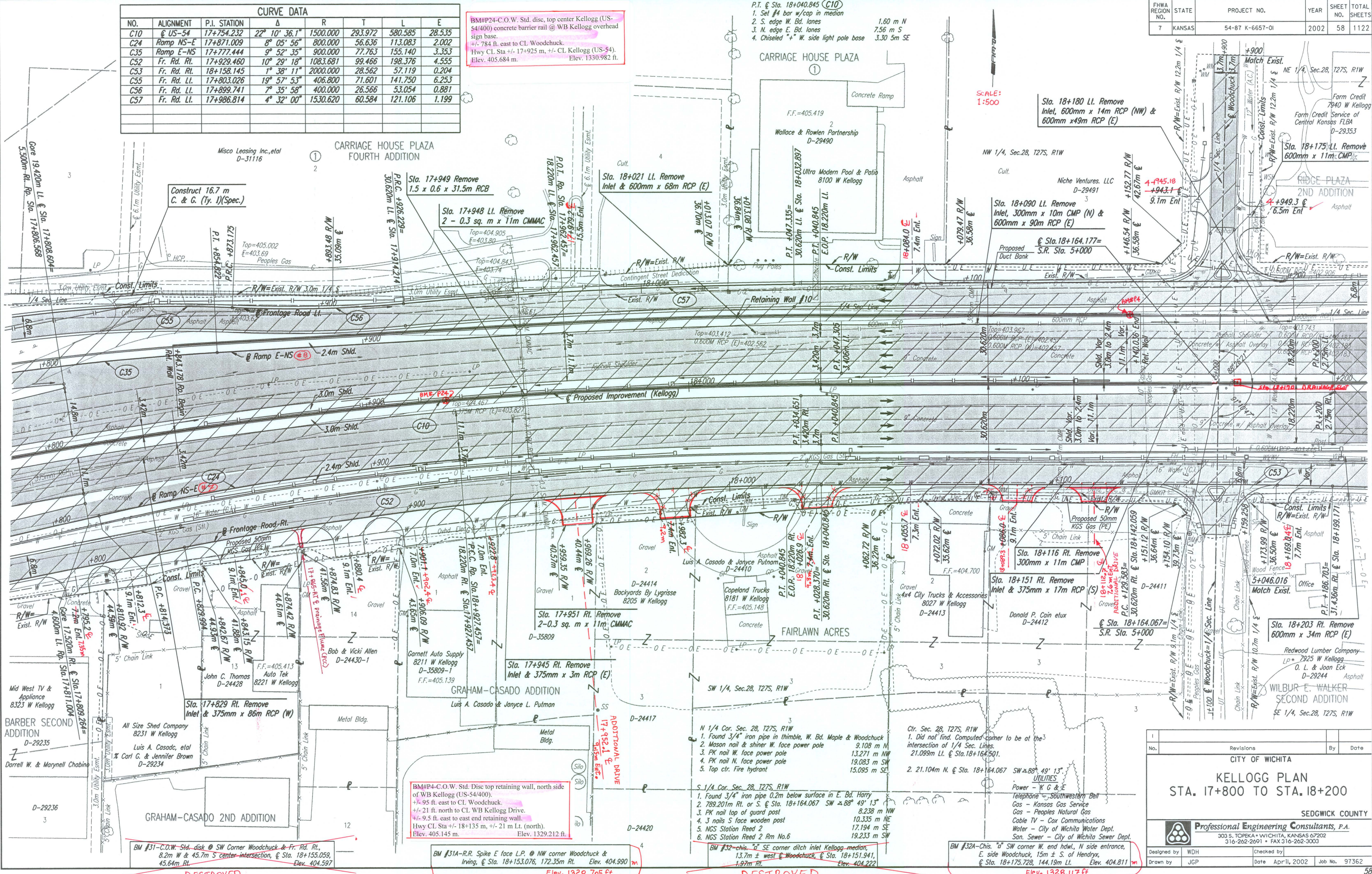


CURVE DATA							
NO.	ALIGNMENT	P.I. STATION	Δ	R	T	L	E
C10	US-54	17+754.232	22° 10' 36.1"	1500.000	293.972	580.585	28.535
C24	Ramp NS-E	17+871.009	8° 05' 56"	800.000	56.636	113.083	2.002
C35	Ramp E-NS	17+777.444	9° 52' 35"	900.000	77.763	155.140	3.353
C52	Fr. Rd. Rt.	17+929.460	10° 29' 18"	1083.681	99.466	198.376	4.555
C53	Fr. Rd. Rt.	18+158.145	1° 38' 11"	2000.000	28.562	57.119	0.204
C55	Fr. Rd. Lt.	17+803.026	19° 57' 53"	406.800	71.601	141.750	6.253
C56	Fr. Rd. Lt.	17+899.741	7° 35' 58"	400.000	26.566	53.054	0.881
C57	Fr. Rd. Lt.	17+986.814	4° 32' 00"	1530.620	60.584	121.106	1.199

BM#P24-C.O.W. Std. disc, top center Kellogg (US-54/400) concrete barrier rail @ WB Kellogg overhead sign base.  
 +/- 784 ft. east to CL Woodchuck.  
 Hwy Cl. Sta +/- 17+925 m, +/- CL Kellogg (US-54).  
 Elev. 405.684 m. Elev. 1330.982 ft.

- P.T. @ Sta. 18+040.845 (C10)
- Set #4 bar w/cap in median
  - S. edge W. Bd. lanes
  - N. edge E. Bd. lanes
  - Chiseled "W" side light pole base
- 1.60 m N  
7.56 m S  
3.30 5m SE

DATE	
BY	
REFERENCES NOTED	
REFERENCES CHECKED	



DSNR: WDH OPER: JGP SCALE: 1:500  
 1/1997/97362/PL178-182.DGN 11-19-1999 14:46:26 LAST REV: 2-1-2002 BY: svb

BM #31-C.O.W. Std. disk @ SW Corner Woodchuck & Fr. Rd. Rt., 8.2m W & 45.7m S center-intersection, @ Sta. 18+155.059, 45.64m RL. Elev. 404.597

BM #31A-R.R. Spike E face L.P. @ NW corner Woodchuck & Irving, @ Sta. 18+153.076, 172.35m RL. Elev. 404.990 m

BM #32-chis. "SE" SE corner ditch inlet Kellogg median, 13.7m ± west @ Woodchuck, @ Sta. 18+151.941, 1.97m RL. Elev. 404.222

BM #32A-Chis. "d" SW corner W. end hwl., N side entrance, E. side Woodchuck, 15m ± S. of Hendryx, @ Sta. 18+175.728, 144.19m RL. Elev. 404.811 m

No.	Revisions	By	Date

CITY OF WICHITA

**KELLOGG PLAN**  
STA. 17+800 TO STA. 18+200

SEDGWICK COUNTY

**Professional Engineering Consultants, P.A.**  
303 S. TOPKA • WICHITA, KANSAS 67202  
316-262-2691 • FAX 316-262-3003

Designed by WDH      Checked by  
 Drawn by JGP          Date April, 2002      Job No. 97362

DESTROYED

Elev. 1328.705 ft

DESTROYED

Elev. 1328.117 ft