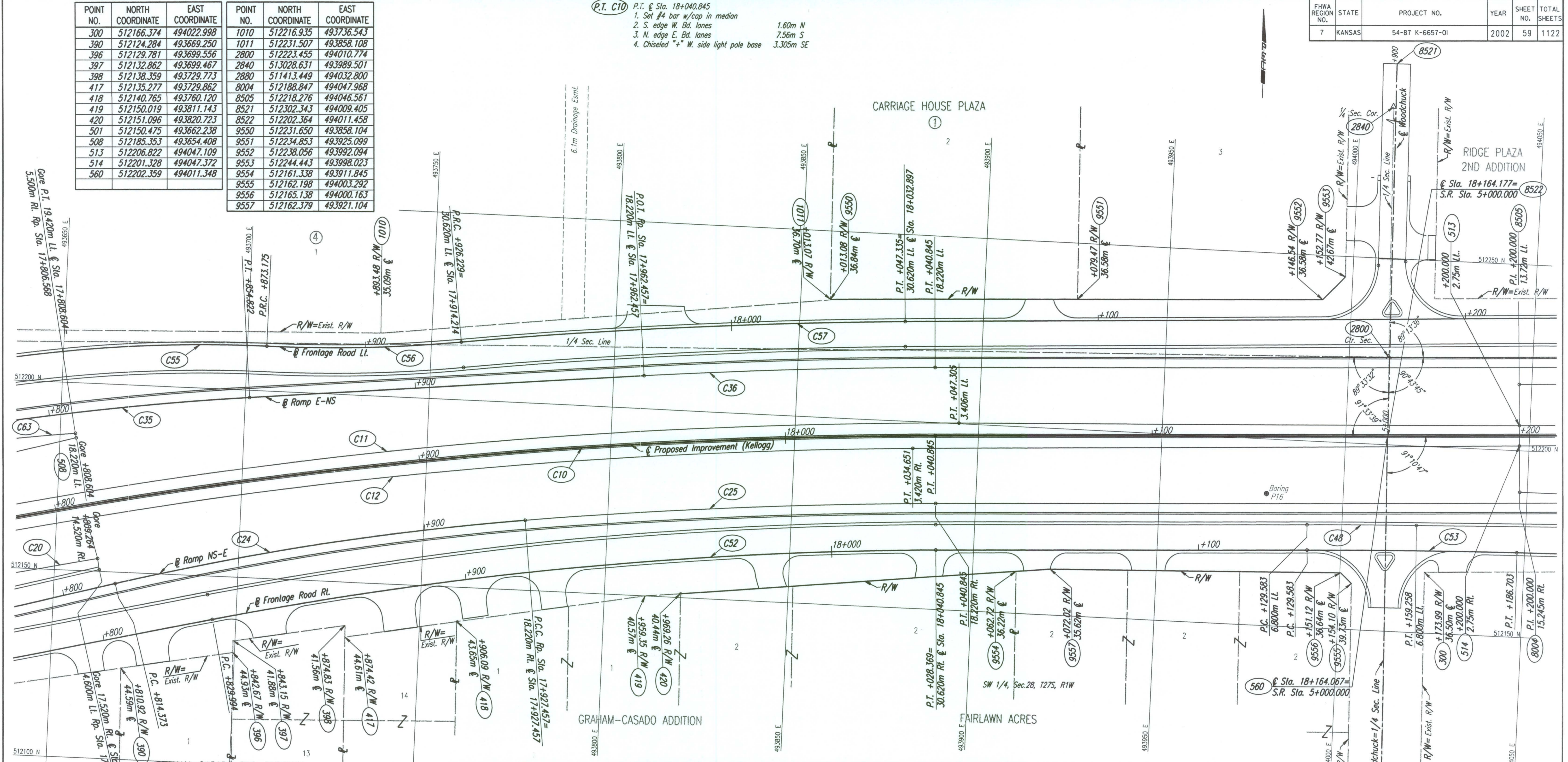


FHWA REGION NO.	STATE	PROJECT NO.	YEAR	SHEET NO.	TOTAL SHEETS
7	KANSAS	54-87 K-6657-01	2002	59	1122

POINT NO.	NORTH COORDINATE	EAST COORDINATE	POINT NO.	NORTH COORDINATE	EAST COORDINATE
300	512166.374	494022.998	1010	512216.935	493736.543
390	512124.284	493669.250	1011	512231.507	493858.108
396	512129.781	493699.556	2800	512223.455	494010.774
397	512132.862	493699.467	2840	513028.631	493989.501
398	512138.359	493729.773	2880	511413.449	494032.800
417	512135.277	493729.862	8004	512188.847	494047.968
418	512140.765	493760.120	8505	512218.276	494046.561
419	512150.019	493811.143	8521	512302.343	494009.405
420	512151.096	493820.723	8522	512202.364	494011.458
501	512150.475	493662.238	9550	512231.650	493858.104
508	512185.353	493654.408	9551	512234.853	493925.099
513	512206.822	494047.109	9552	512238.056	493992.094
514	512201.328	494047.372	9553	512244.443	493998.023
560	512202.359	494011.348	9554	512161.338	493911.845
			9555	512162.198	494003.292
			9556	512165.138	494000.163
			9557	512162.379	493921.104

P.T. C10 P.T. @ Sta. 18+040.845  
 1. Set #4 bar w/cap in median 1.60m N  
 2. S. edge W. Bd. lanes 7.56m S  
 3. N. edge E. Bd. lanes 3.305m S  
 4. Chiseled "\*" W. side light pole base 3.305m SE

DATE	
BY	
REFERENCES NOTED	
REFERENCES CHECKED	



CURVE NO.	P.C. COORDINATES		P.I. COORDINATES		P.T. COORDINATES		C.C. COORDINATES	
	NORTH	EAST	NORTH	EAST	NORTH	EAST	NORTH	EAST
C10	512058.598	493328.016	512182.435	493594.631	512196.474	493888.267	510698.186	493959.901
C11	512061.700	493326.575	512187.233	493596.841	512200.185	493894.557	510698.186	493959.901
C12	512055.496	493329.456	512177.700	493592.555	512192.750	493882.258	510698.186	493959.901
C20	512045.429	493334.132	512118.558	493491.574	512153.414	493661.635	510698.186	493959.901
C24	512146.917	493666.694	512161.735	493721.357	512168.704	493777.562	511374.784	493876.005
C25	512168.704	493777.562	512175.599	493833.169	512178.275	493889.137	510698.186	493959.901
C35	512169.379	493548.916	512190.301	493623.811	512198.067	493701.185	511302.566	493791.064
C36	512208.816	493808.282	512212.779	493847.763	512214.674	493887.397	510698.186	493959.901
C48	512177.515	493990.503	512178.226	494005.374	512178.716	494020.254	510173.005	494086.340
C52	512138.383	493693.549	512161.139	493790.377	512165.889	493889.729	511083.445	493941.481
C53	512170.723	493990.828	512172.087	494019.357	512172.636	494047.913	510173.005	494086.340
C55	512187.574	493566.339	512211.993	493633.648	512211.961	493705.249	511805.161	493705.070
C56	512211.961	493705.249	512211.949	493731.815	512215.451	493758.149	512611.961	493705.425
C57	512215.451	493758.149	512223.437	493818.205	512226.651	493878.704	510698.186	493959.901
C63	512180.345	493614.300	512184.331	493634.094	512186.528	493654.166	511739.201	493703.136

NO.	ALIGNMENT	P.I. STATION	CURVE DATA				
			Δ	R	T	L	E
C10	@ US-54	17+754.232	22° 10' 36"	1500.000	293.972	580.585	28.535
C11	@ US-54		22° 25' 22"	1503.420	297.997	588.369	29.249
C12	@ US-54		21° 56' 24"	1496.580	290.094	573.081	27.856
C20	@ US-54		13° 19' 51"	1485.480	173.596	345.625	10.109
C24	Ramp NS-E	17+871.009	8° 05' 56"	800.000	56.636	113.083	2.002
C25	@ US-54		4° 19' 52"	1481.780	56.032	112.011	1.059
C35	Ramp E-NS	17+777.444	9° 52' 35"	900.000	77.763	155.140	3.353
C36	@ US-54		2° 59' 39"	1518.220	39.679	79.340	0.518
C48	Fr. Rd. Rt.		0° 51' 00"	2006.800	14.888	29.776	0.055
C52	Fr. Rd. Rt.	17+929.460	10° 29' 18"	1083.681	99.466	198.376	4.555
C53	Fr. Rd. Rt.	18+158.145	1° 38' 11"	2000.000	28.562	57.119	0.204
C55	Fr. Rd. Lt.	17+803.026	19° 57' 53"	406.800	71.601	141.750	6.253
C56	Fr. Rd. Lt.	17+899.741	7° 35' 58"	400.000	26.566	53.054	0.881
C57	Fr. Rd. Lt.	17+986.814	4° 32' 00"	1530.620	60.584	121.106	1.199
C63	Ramp E-NS		5° 08' 18"	450.000	20.192	40.356	0.453

Revisions

No.	Revisions	By	Date

CITY OF WICHITA

**GEOMETRIC COORDINATE LAYOUT**  
 STA. 17+800 TO STA. 18+200

SEDGWICK COUNTY

**Professional Engineering Consultants, P.A.**  
 303 S. TOPEKA • WICHITA, KANSAS 67202  
 316-262-2691 • FAX 316-262-3003

Designed by: WDH  
 Drawn by: JGP

Checked by: WDH  
 Date: April, 2002

Job No. 97362

DSNR: JPS OPER: JGP SCALE: 1:500  
 1/1997/97362/GEOMCOORD/G178.DGN 11-19-1999 13:25:28 LAST REV: 1-2-02 BY: JGP