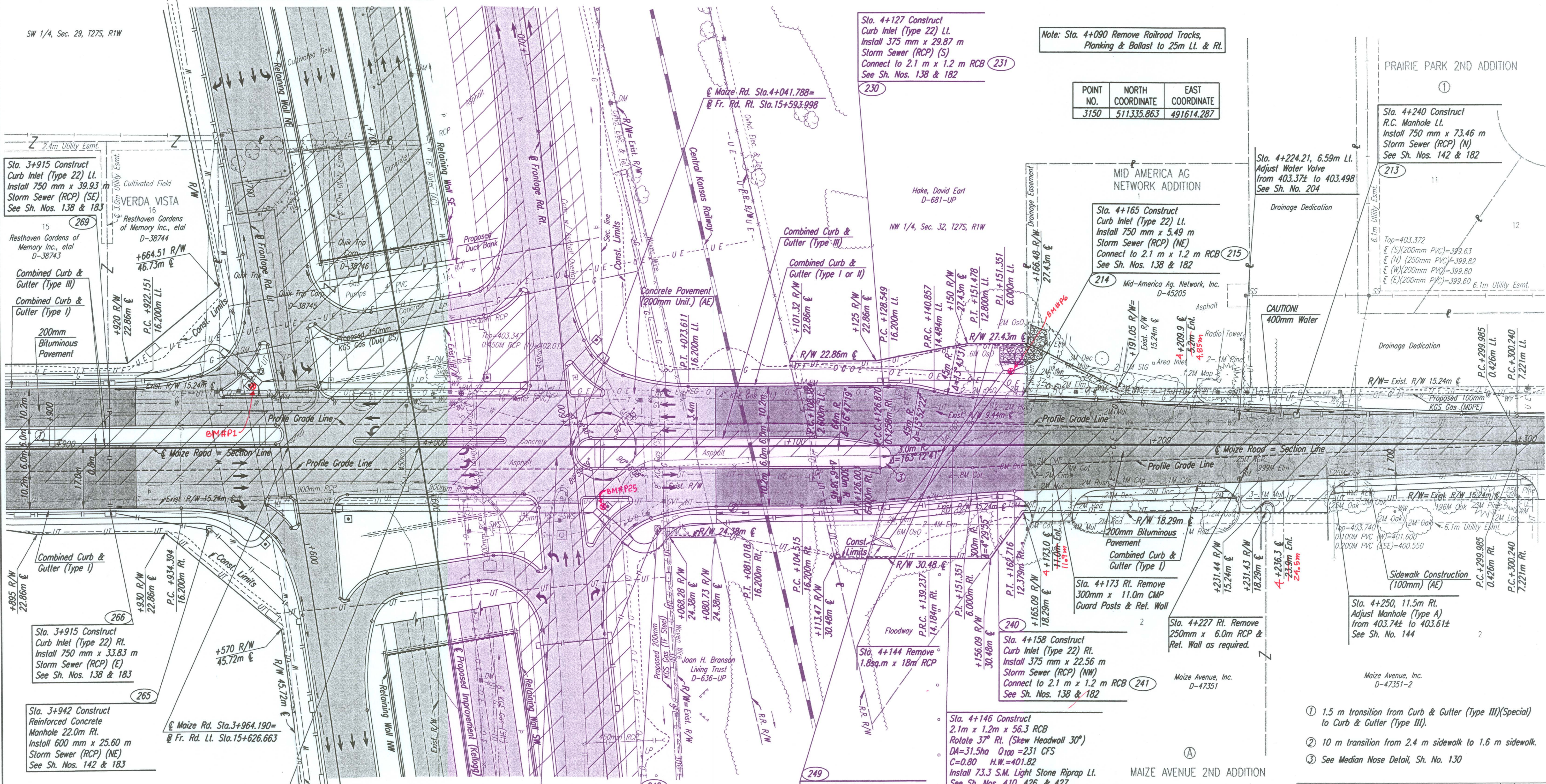


Note: Contractor to remove pavement, foundations, light poles & sign footings, etc. from the Quik Trip site.

Scale: 1:500

DATE	
BY	
REFERENCES NOTED	
REFERENCES CHECKED	

SW 1/4, Sec. 29, T27S, R1W



Sta. 3+915 Construct Curb Inlet (Type 22) Lt. Install 750 mm x 39.93 m Storm Sewer (RCP) (SE) See Sh. Nos. 138 & 183

Combined Curb & Gutter (Type III)
Combined Curb & Gutter (Type I)
200mm Bituminous Pavement

Sta. 3+915 Construct Curb Inlet (Type 22) Rt. Install 750 mm x 33.83 m Storm Sewer (RCP) (E) See Sh. Nos. 138 & 183

Sta. 3+942 Construct Reinforced Concrete Manhole 22.0m Rt. Install 600 mm x 25.60 m Storm Sewer (RCP) (NE) See Sh. Nos. 142 & 183

Maize Rd. Sta. 3+964.190 = Fr. Rd. Lt. Sta. 15+626.663

SE 1/4, Sec. 30, T27S, R1W

Bledsoe Enterprises, Inc. D-589-UP

Maize Rd. Sta. 4+000 = Fr. Rd. Lt. Sta. 15+612.397

BM#P6-C.O.W. Std. Disc east headwall, south end R.C.B. under Maize Road. +/- 525 ft. north to CL Kellogg (US-54/400). +/- 66 ft. west to CL Maize Road. Maize Rd CL Sta. +/- 4+162 m, +/- 20 m. Lt. (east). Elev. 401.546 m. Elev. 1317.404 ft.

BM#P1-C.O.W. Std. Disc, NE corner WB Kellogg Dr & Maize Rd, SW corner traffic signal pole base. +/- 144 ft south to CL Kellogg (US-54/400). +/- 49 ft west to CL Maize Road. Hwy CL Sta +/- 15+636 m, +/- 44 m Lt. (north). Elev. 403.586 m. Elev. 1324.099 ft.

DESTROYED
BM #24-C.O.W. Std. Disc SW corner signal pole base NE corner Kellogg & Maize Rd. Elev. 403.561

For Intersection Detail See Sh. Nos. 83 & 84

- SW Cor. Sec. 29, T27S, R1W (3150)
 1. Maize Rd. Sta. 4+050.279
 2. Found 3/8" pin ctr. Maize Rd.
 3. Nail & cap SW face light pole
 4. Chis. "x" NE corner signal pole base
 5. Mason nail & shiner N face power pole
 6. N rail of RR tracks

Sta. 4+065 Construct R.C. Manhole 22.0m Rt. Install 450mm x 60.66 m Storm Sewer (RCP) (S) See Sh. Nos. 142 & 183

Sta. 4+127 Construct Curb Inlet (Type 22) Rt. Install 450 mm x 4.27 m Storm Sewer (RCP) (S) Connect to 2.1m x 1.2m RCB (250) See Sh. Nos. 138 & 183

BM#P25-C.O.W. Std. Disc, SW corner EB Kellogg Dr & Maize Road, NE corner traffic signal pole base. +/- 164 ft. north to center of Kellogg (US-54/400). +/- 49 ft. east to center Maize Road. Hwy CL Sta +/- 15+590 m, +/- 50 m Rt. (south). Elev. 403.614 m. Elev. 1324.189 ft.

DESTROYED
BM #24B-RR Spike west face Power-pole, E. of Maize Rd., 1st pole S of RR tracks Elev. 403.422

DESTROYED
BM #24C-Chis. "x" center E end conc. retaining wall, N side drive, S drive-to-Precision Pattern Elev. 404.039

Sta. 4+127 Construct Curb Inlet (Type 22) Lt. Install 375 mm x 29.87 m Storm Sewer (RCP) (S) Connect to 2.1 m x 1.2 m RCB (231) See Sh. Nos. 138 & 182

Note: Sta. 4+090 Remove Railroad Tracks, Planking & Ballast to 25m Lt. & Rt.

POINT NO.	NORTH COORDINATE	EAST COORDINATE
3150	511335.863	491614.287

Sta. 4+165 Construct Curb Inlet (Type 22) Lt. Install 750 mm x 5.49 m Storm Sewer (RCP) (NE) Connect to 2.1 m x 1.2 m RCB (215) See Sh. Nos. 138 & 182

Sta. 4+224.21, 6.59m Lt. Adjust Water Valve from 403.37± to 403.498 See Sh. No. 204

Sta. 4+240 Construct R.C. Manhole Lt. Install 750 mm x 73.46 m Storm Sewer (RCP) (N) See Sh. Nos. 142 & 182

Sta. 4+173 Rt. Remove 300mm x 11.0m CMP Guard Posts & Ret. Wall

Sta. 4+227 Rt. Remove 250mm x 6.0m RCP & Ret. Wall as required.

Sta. 4+250, 11.5m Rt. Adjust Manhole (Type A) from 403.74± to 403.61± See Sh. No. 144

Sta. 4+146 Construct 2.1m x 1.2m x 56.3 RCB Rotate 37° Rt. (Skew Headwall 30°) DA=31.5ha Q100=231 CFS C=0.80 H.W.=401.82 Install 73.3 S.M. Light Stone Riprap Lt. See Sh. Nos. 410, 426, & 427

MAIZE AVENUE 2ND ADDITION
NE 1/4, Sec. 31, T27S, R1W

- 1.5 m transition from Curb & Gutter (Type III)(Special) to Curb & Gutter (Type III).
- 10 m transition from 2.4 m sidewalk to 1.6 m sidewalk.
- See Median Nose Detail, Sh. No. 130

No.	Revisions	By	Date

CITY OF WICHITA
MAIZE ROAD
 STA. 3+900 TO STA. 4+300
 SEDGWICK COUNTY

Professional Engineering Consultants, P.A.
 303 S. TOPEKA • WICHITA, KANSAS 67202
 316-262-2601 • FAX 316-262-3003

Designed by RCH
 Drawn by JGP
 Checked by WDH
 Date April, 2002
 Job No. 97362

DSNR: WDH OPER: JGP SCALE: 1:500
 i:/1997/97362/MAIZE RD/PL3900.DGN 11-24-1999 14:07:29 LAST REV: 1-31-2002 BY: svb