

P.I. Tyler Rd. Sta. 4+808.331 = W 1/4 Cor. Sec. 28, T27S, R1W
 1. Found 3/4" iron pipe in thimble @ ctr. McCormick & Tyler
 2. 3 nails N. face power pole 16.105m SE
 3. 2 nails N. face power pole 15.467m WSW
 4. 3 nails S. face power pole 16.459m NW
 5. PK nail S. face power pole 19.087m NE

Sta. 4+812.924 Construct Curb Inlet (Type 22) (Radius) 19.563m Lt. Install 450mm x 5.79m Storm Sewer (RCP)(NE) with 450mm x 1.22m RCP Elbow (20° Deflection) Connect to Exist. 450mm RCP (151) See Sh. Nos. 137 & 182
 Revise curb inlet to a 'GRATE INLET' (Flush with pavement). See Change Order #3.

NOTE: (142) remains existing base in-place. Holes cut to receive new SWS RCP. See Change Order #2.

Sta. 4+874.8, 10.7 m Lt. Construct Reinf. Concrete Manhole Connect to Exist. 450mm RCP (W) & to Exist. 375mm PVC (SE) See Sh. Nos. 142 & 181

Sta. 4+897 Construct Curb Inlet (Type 22) Lt. Install 375mm x 22.25m Storm Sewer (RCP)(NW) See Sh. Nos. 138 & 181

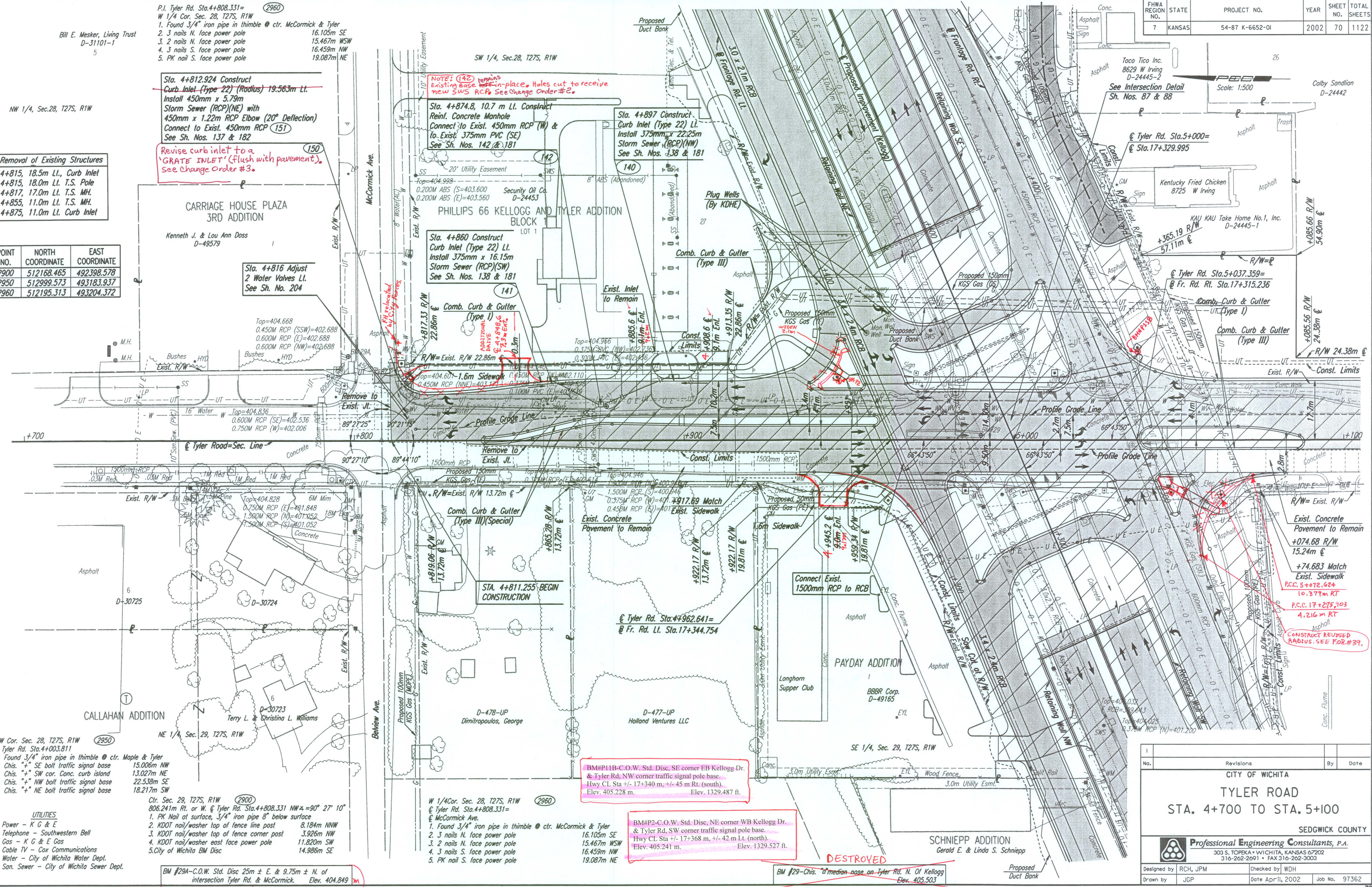
Sta. 4+860 Construct Curb Inlet (Type 22) Lt. Install 375mm x 16.15m Storm Sewer (RCP)(SW) See Sh. Nos. 138 & 181

Sta. 4+816 Adjust 2 Water Valves Lt. See Sh. No. 204

Removal of Existing Structures
 4+815, 18.5m Lt. Curb Inlet
 4+815, 18.0m Lt. T.S. Pole
 4+817, 17.0m Lt. T.S. MH.
 4+855, 11.0m Lt. T.S. MH.
 4+875, 11.0m Lt. Curb Inlet

POINT NO.	NORTH COORDINATE	EAST COORDINATE
2900	512168.465	492398.578
2950	512999.573	493183.937
2960	512195.313	493204.372

DATE	BY	REFERENCES NOTED	REFERENCES CHECKED



No.	Revisions	By	Date

CITY OF WICHITA
 TYLER ROAD
 STA. 4+700 TO STA. 5+100
 SEDGWICK COUNTY

Professional Engineering Consultants, P.A.
 303 S. TOPKA • WICHITA, KANSAS 67202
 316-262-2691 • FAX 316-262-3003

Designed by RCH, JPM Checked by WDH
 Drawn by JGP Date April 11, 2002 Job No. 97362

NW Cor. Sec. 28, T27S, R1W
 @ Tyler Rd. Sta. 4+003.811
 1. Found 3/4" iron pipe in thimble @ ctr. Maple & Tyler
 2. Chis. "+" SE bolt traffic signal base 15.006m NW
 3. Chis. "+" SW cor. Conc. curb island 13.027m NE
 4. Chis. "+" NW bolt traffic signal base 22.538m SE
 5. Chis. "+" NE bolt traffic signal base 18.217m SW

Ctr. Sec. 29, T27S, R1W
 806.241m Rt. or W. @ Tyler Rd. Sta. 4+808.331 = 90° 27' 10"
 1. PK Nail at surface, 3/4" iron pipe 8" below surface 8.184m NNW
 2. KDOT nail/washer top of fence line post 3.926m NW
 3. KDOT nail/washer top of fence corner post 11.820m SW
 4. KDOT nail/washer east face power pole 14.986m SE
 5. City of Wichita BM Disc

W 1/4 Cor. Sec. 28, T27S, R1W
 @ Tyler Rd. Sta. 4+808.331 = McCormick Ave.
 1. Found 3/4" iron pipe in thimble @ ctr. McCormick & Tyler
 2. 3 nails N. face power pole 16.105m SE
 3. 2 nails N. face power pole 15.467m WSW
 4. 3 nails S. face power pole 16.459m NW
 5. PK nail S. face power pole 19.087m NE

BM#P11B-C.O.W. Std. Disc, SE corner EB Kellogg Dr. & Tyler Rd. NW corner traffic signal pole base.
 Hwy CL Sta +/- 17+340 m, +/- 45 m Rt. (south).
 Elev. 405.228 m. Elev. 1329.487 ft.

BM#P2-C.O.W. Std. Disc, NE corner WB Kellogg Dr. & Tyler Rd. SW corner traffic signal pole base.
 Hwy CL Sta +/- 17+368 m, +/- 42 m Lt. (north).
 Elev. 405.241 m. Elev. 1329.527 ft.

BM #29A-C.O.W. Std. Disc 25m ± E. & 9.75m ± N. of intersection Tyler Rd. & McCormick. Elev. 404.849 m.
 Elev. 1328.242 ft.

BM #29-Chis. "d" median nose on Tyler Rd. N. Of Kellogg
 Elev. 405.503

DSNR: RCH OPER: JGP SCALE: 1:500 LAST REV: 2-1-2002 BY: svb
 I:1997/97362/TYLER RD/PL4700.DGN 10-27-1999 13:33:08