

P.I. @ Tyler Rd. Sta. 5+612.862= 3250
 @ Harry St. Sta. 8+000.000=
 NE Cor. Sec. 32, T27S, R1W
 Deflection Angle=0°10'16" Rt.
 See Sec. Cor. Ties this Sheet

① Paid for as "Adjustment of Manhole"

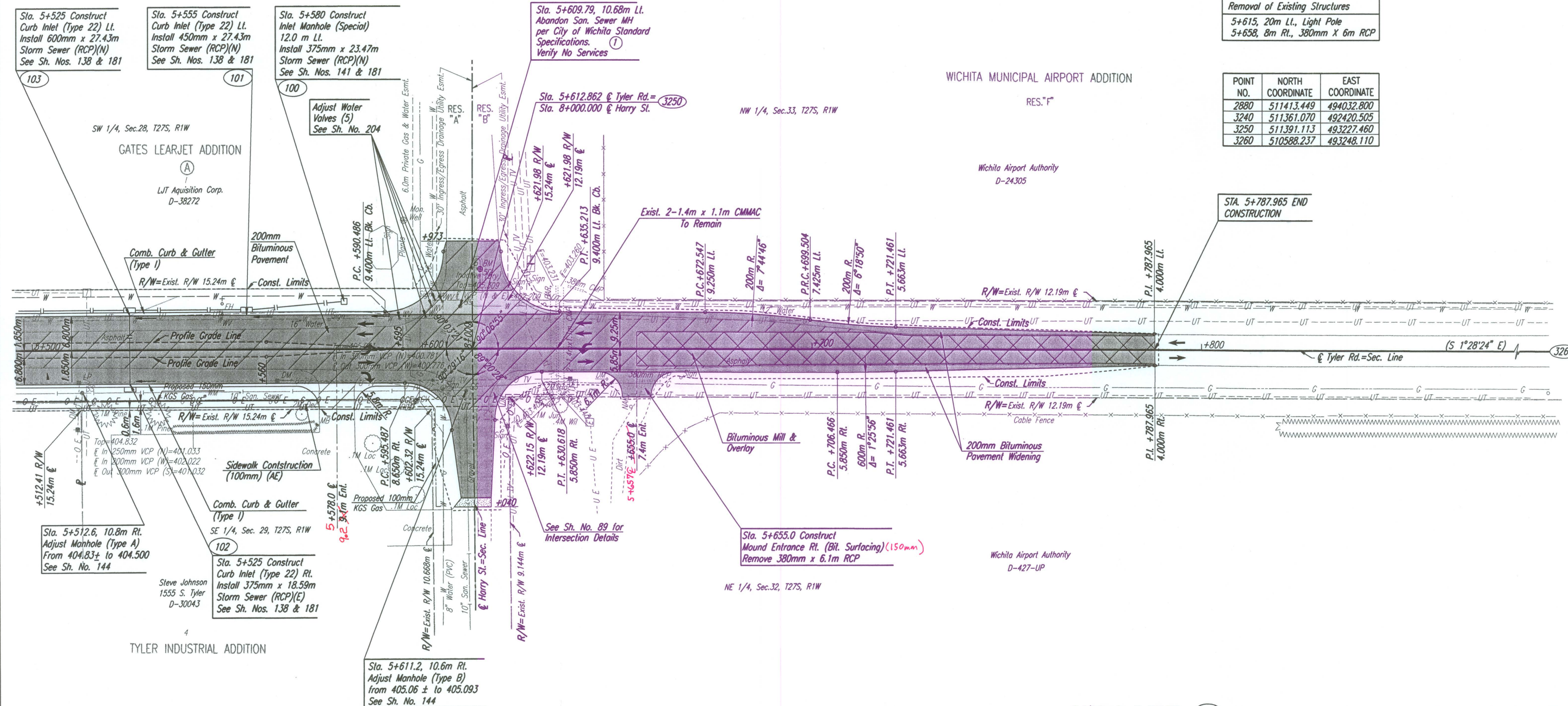
FHWA REGION NO.	STATE	PROJECT NO.	YEAR	SHEET NO.	TOTAL SHEETS
7	KANSAS	54-87 K-6657-01	2002	74	1122



DATE	BY

REFERENCES NOTED	REFERENCES CHECKED

DSNR: RCH OPER: JGP SCALE: 1:500
 1/1997/97362/TYLER RD/PL5500.DGN 10-27-1999 13:36:33 LAST REV: 2-1-2002 BY: svb



Removal of Existing Structures
 5+615, 20m Lt., Light Pole
 5+658, 8m Rt., 380mm X 6m RCP

POINT NO.	NORTH COORDINATE	EAST COORDINATE
2880	511413.449	494032.800
3240	511361.070	492420.505
3250	511391.113	493227.460
3260	510588.237	493248.110

- S 1/4 Cor. Sec. 29, T27S, R1W 3240
 807.514m Rt. or W. @ Tyler Rd. Sta. 5+612.862=
 @ Harry St. Sta. 8+807.542 NW 4=90°29'16"
 1. Found 1/2" rebar
 2. 60d nail top of guard post 7.735m SSW
 3. 60d nail top of guard post 8.199m NW
 4. Chis. "+" south face steel corner post 16.142m NE
 5. PK nail top of guard post 11.540m S

- NE Cor. Sec. 32, T27S, R1W 3250
 @ Tyler Rd. Sta. 5+612.862=
 @ Harry St. Sta. 8+000.000
 1. Found RR Date Nail "40" @ Tyler & Harry 21.494m SW
 2. Mason nail & cap N. face power pole 26.186m SSW
 3. PK nail & shiner E. Face power pole 15.522m E
 4. Chis. "+" N. PC, W. end curb island 18.804m NW
 5. Chis. "+" top SE guard post to gas reg.

- S 1/4 Cor. Sec. 28, T27S, R1W 2880
 805.650m Lt. or E. @ Tyler Rd. Sta. 5+612.862=
 @ Harry St. Sta. 7+194.350 NE 4=90°03'21"
 1. Found 3/4" iron pipe 0.2m below surface in E. Bd. Harry 8.238m NW
 2. PK nail top of guard post 10.335m NE
 3. 3 nails S face wooden post 17.194m SE
 4. NGS Station Reed 2 19.233m SW
 5. NGS Station Reed 2 Rm No.6

- E 1/4 Cor. Sec. 32, T27S, R1W 3260
 @ Tyler Rd. Sta. 6+416.004
 1. Found 3/4" iron pipe in thimble 0.160m below surface 46.560m SSW
 2. PK nail E. face power pole 16.785m WSW
 3. PK nail top of cable fence post 18.869m NW
 4. 3 nails NE face power pole 12.356m NW
 5. Chis. "+" in conc. base fence brace post

UTILITIES
 Power - K G & E
 Telephone - Southwestern Bell
 Gas - K G & E Gas
 Cable TV - Cox Communications
 Water - City of Wichita Water Dept.
 San. Sewer - City of Wichita Sewer Dept.

~~DESTROYED~~
 BM #50-Chis. "g" light pole base in medium, entrance to
 Bombardier, east side of Tyler. Elev. 406.435

BM #51-Chis. "d" @ Hdwl. west side Tyler Rd. @
 R/W fence. 400m south of Harry Elev. 403.733
 Elev. 1324.981 Ft

No.	Revisions	By	Date

CITY OF WICHITA
TYLER ROAD
 STA. 5+500 TO STA. 5+800
 SEDGWICK COUNTY

Professional Engineering Consultants, P.A.
 303 S. TOPEKA • WICHITA, KANSAS 67202
 316-262-2691 • FAX 316-262-3003

Designed by RCH, JPM
 Drawn by JGP
 Checked by WDH
 Date April, 2002
 Job No. 97362