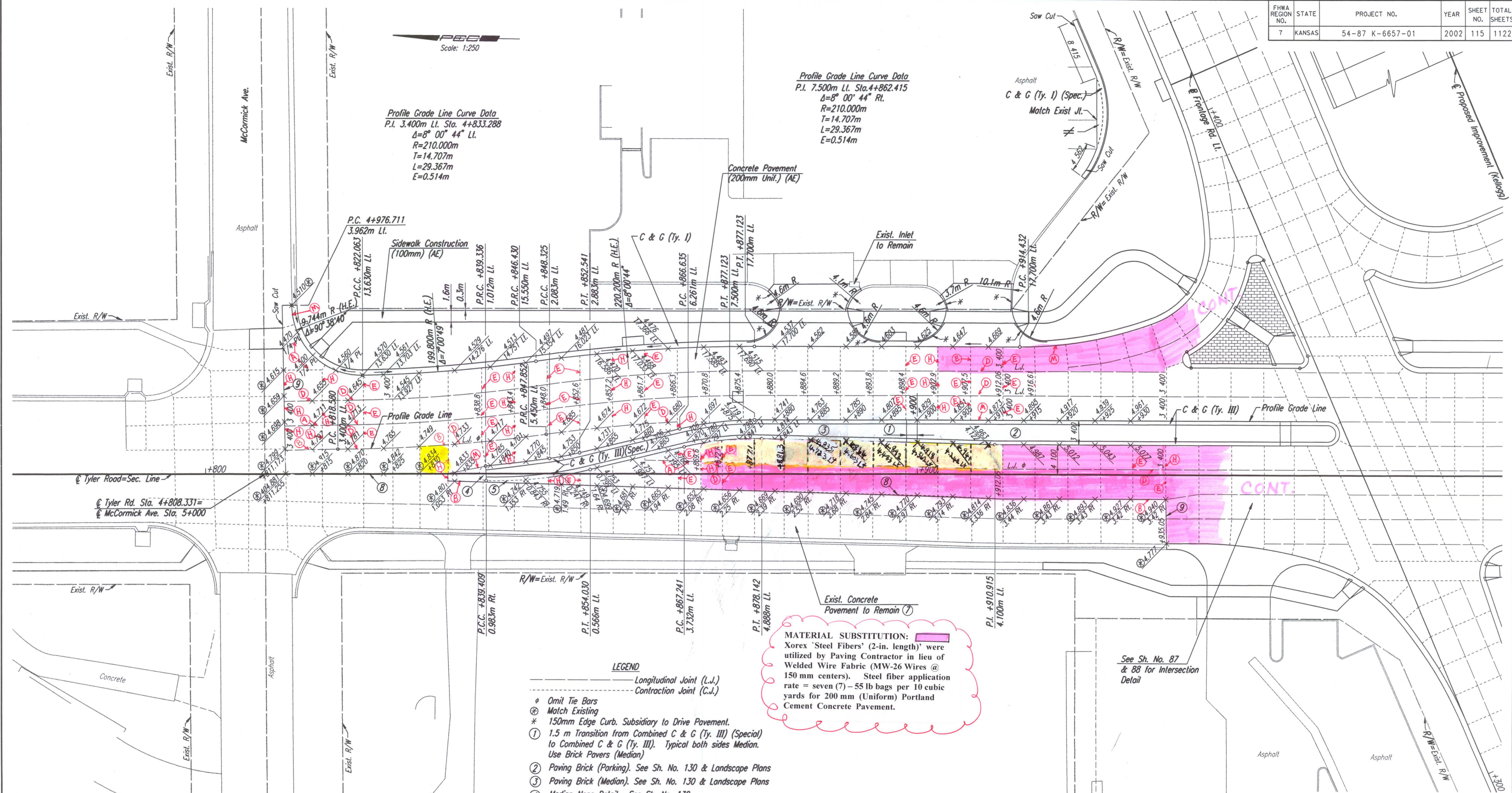


DATE	
BY	
REFERENCES NOTED	
REFERENCES CHECKED	

Scale: 1:250

Profile Grade Line Curve Data
 P.I. 3.400m Lt. Sta. 4+833.288
 $\Delta=8^{\circ} 00' 44''$ Lt.
 $R=210.000m$
 $T=14.707m$
 $L=29.367m$
 $E=0.514m$

Profile Grade Line Curve Data
 P.I. 7.500m Lt. Sta. 4+862.415
 $\Delta=8^{\circ} 00' 44''$ Rt.
 $R=210.000m$
 $T=14.707m$
 $L=29.367m$
 $E=0.514m$



MATERIAL SUBSTITUTION:
 Xorex 'Steel Fibers' (2-in. length) were utilized by Paving Contractor in lieu of Welded Wire Fabric (MW-26 Wires @ 150 mm centers). Steel fiber application rate = seven (7) - 55 lb bags per 10 cubic yards for 200 mm (Uniform) Portland Cement Concrete Pavement.

- LEGEND**
- Longitudinal Joint (L.J.)
 - Contraction Joint (C.J.)
 - ⊕ Omit Tie Bars
 - ⊗ Match Existing
 - * 150mm Edge Curb, Subsidiary to Drive Pavement.
 - ① 1.5 m Transition from Combined C & G (Ty. III) (Special) to Combined C & G (Ty. III). Typical both sides Median. Use Brick Pavers (Median)
 - ② Paving Brick (Parking). See Sh. No. 130 & Landscape Plans
 - ③ Paving Brick (Median). See Sh. No. 130 & Landscape Plans
 - ④ Median Nose Detail. See Sh. No. 130
 - ⑤ Curb & Gutter to be cast monolithic with pavement. Paid for as "Combined Curb & Gutter".
 - ⑦ Joints in new concrete pavement to match existing joints.
 - ⑧ Preserve existing tie bars or drill & grout #16 x 600mm tie bars @ 900mm ctrs. into existing slab. Subsidiary
 - ⑨ Drill & grout dowel bars into existing slab. Use same dowel as Concrete Pavement (200mm Unit.) (AE) (NRDU). Subsidiary

- CONCRETE PAVEMENT JOINT TYPES:**
- A) CONTRACTION JOINT with #16 x 600mm DEFORMED TIE BARS & SAWN.
 - B) CONSTRUCTION JOINT with #16 x 600mm DEFORMED TIE BARS.
 - C) CONSTRUCTION JOINT: KEYWAY ONLY.
 - D) CONSTRUCTION JOINT with KEYWAY & #16 x 600mm DEFORMED TIE BARS.

- CONCRETE PAVEMENT JOINT TYPES:**
- E) CONTRACTION JOINT with SMOOTH DOWEL BARS:
 - 1) 200mm PCCP = 25mm x 450mm.
 - 2) 260mm PCCP = 32mm x 450mm.
 - F) CONSTRUCTION JOINT: NON-TIED.
 - G) CONSTRUCTION JOINT along curb & gutter with #16 x 900mm EPOXY COATED DEFORMED TIE BARS.

- CONCRETE PAVEMENT JOINT TYPES:**
- H) CONSTRUCTION JOINT with SMOOTH DOWEL BARS:
 - 1) 200mm PCCP = 25mm x 450mm.
 - 2) 260mm PCCP = 32mm x 450mm.
 - I) CONTRACTION JOINT (mainline outside shoulder only) with 2-#16 continuous epoxy deformed bars left uncured & SAWN.

- CONCRETE PAVEMENT JOINT TYPES:**
- J) CONSTRUCTION JOINT (outside shoulder) with 2-#16 continuous epoxy deformed bars.
 - K) CONTRACTION JOINT (inside or outside shoulder) NON-TIED & SAWN.
 - L) EXPANSION JOINT (19mm).
 - M) CONSTRUCTION JOINT along curb/gutter with KEYWAY & #16 x 900mm TIE BARS.

No.	Revisions	By	Date

CITY OF WICHITA
PAVING PLAN
 TYLER ROAD
 STA. 4+700 TO STA. 4+920
 SEDGWICK COUNTY

Professional Engineering Consultants, P.A.
 303 S. TOPEKA • WICHITA, KANSAS 67202
 316-262-2691 • FAX 316-262-3003

Designed by	JPM	Checked by	WDH
Drawn by	SVB	Date	Apr 11, 2002
		Job No.	97362

DSWR: JPM OPER: SVB SCALE: 1:250
 i:/1997/97362/PAVING/TYLER RD/pav4700.DGN 8-17-2001 15:44:08 LAST REV: 11-29-01 BY: JCP