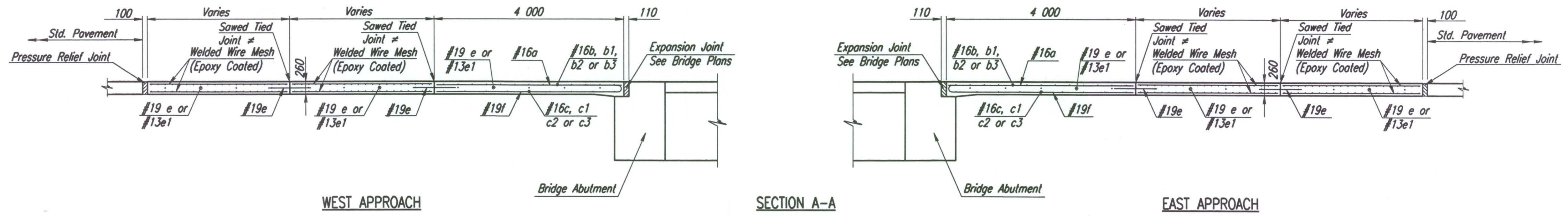


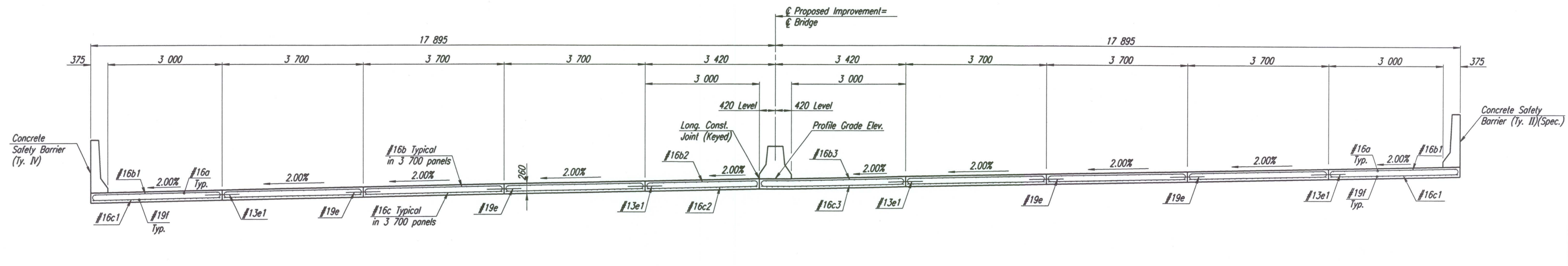
STATE	PROJECT NO.	YEAR	SHEET NO.	TOTAL SHEETS
KANSAS	54-87 K-6657-01	2002	118	1122

DATE	
BY	
REFERENCES NOTED	
REFERENCES CHECKED	



LONGITUDINAL SECTIONS

≠ The Contractor has the option of substituting a Tied Keyed Construction Joint for the Sawed Tied Joint shown.



SECTION B-B

TRANSVERSE SECTION

For Concrete Safety Barrier reinforcing details, see Sh. Nos. 228-230  
Concrete Safety Barrier shall be reinforced through the entire length of the approach pavement.

DSNR: OPER: JGP SCALE: 1:50  
i:/1997/97362/APPROACH SLAB/MAIZESECT.DGN 12-03-2001 14:22:48 LAST REV: 1-18-2002 BY: svb

No.	Revisions	By	Date
CITY OF WICHITA			
CONCRETE BRIDGE APPROACH PAVEMENT E.B. & W.B. US-54 OVER MAIZE ROAD			
SEDGWICK COUNTY			
Professional Engineering Consultants, P.A. 303 S. TOPEKA • WICHITA, KANSAS 67202 316-262-2691 • FAX 316-262-3003			
Designed by	WDH	Checked by	
Drawn by	JGP	Date	April, 2002
		Job No.	97362