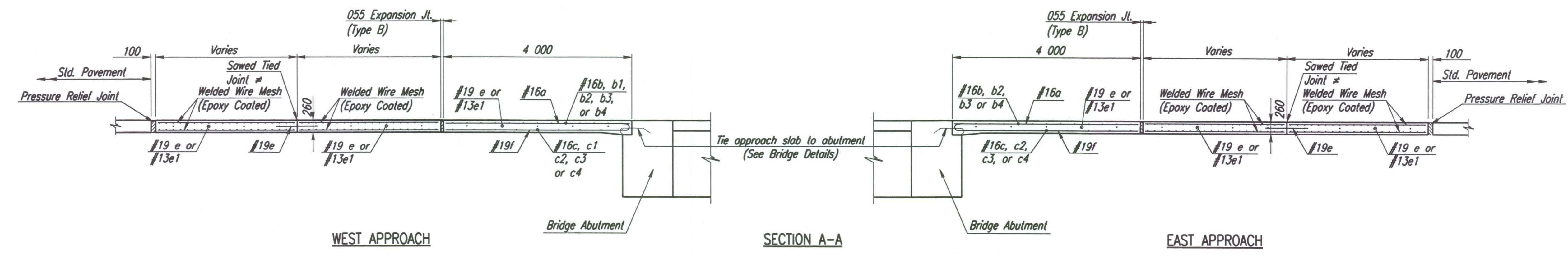


STATE	PROJECT NO.	YEAR	SHEET NO.	TOTAL SHEETS
KANSAS	54-87 K-6657-01	2002	120	1122

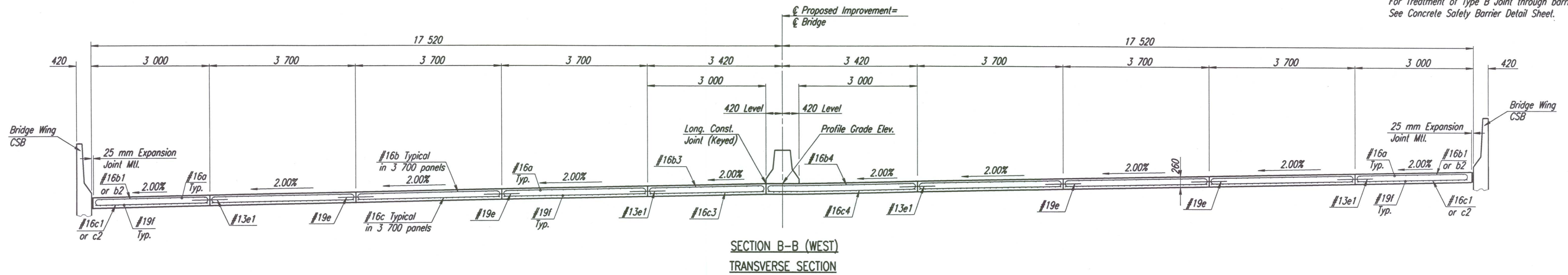
DATE	
BY	
REFERENCES NOTED	
REFERENCES CHECKED	



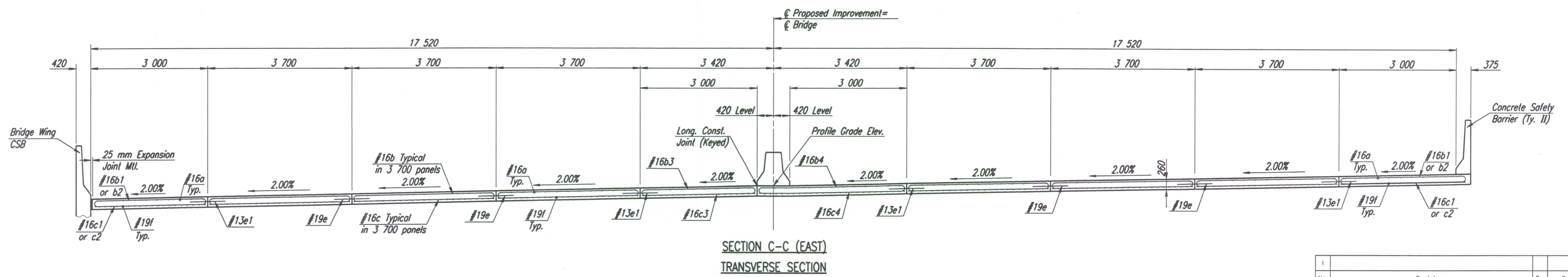
LONGITUDINAL SECTIONS

* The Contractor has the option of substituting a Tied Keyed Construction Joint for the Sawed Tied Joint shown.

For Treatment of Type B Joint through barriers, See Concrete Safety Barrier Detail Sheet.



SECTION B-B (WEST)
TRANSVERSE SECTION



SECTION C-C (EAST)
TRANSVERSE SECTION

For Concrete Safety Barrier reinforcing details, see Sh. No. 228. Concrete Safety Barrier shall be reinforced through the entire length of the approach pavement.

No.	Revisions	By	Date

CITY OF WICHITA

CONCRETE BRIDGE APPROACH PAVEMENT
E.B. & W.B. US-54 OVER COWSKIN CREEK

SEDGWICK COUNTY

Professional Engineering Consultants, P.A.
303 S. TOPEKA • WICHITA, KANSAS 67202
316-262-2691 • FAX 316-262-3003

Designed by	WDH	Checked by	
Drawn by	JGP	Date	April, 2002
		Job No.	97362

DSNR: 1:1997/97362/APPORACH SLAB/CONSECT.DGN 12-03-2001 14:22:48 LAST REV: 1-18-2002 BY: svb
 OPER: JGP SCALE: 1:50