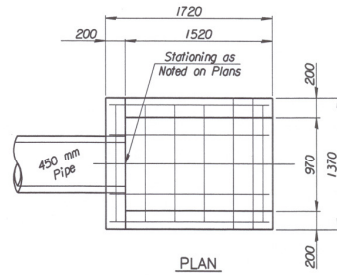
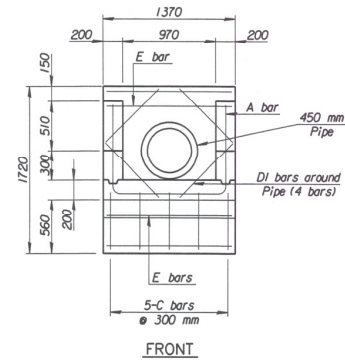


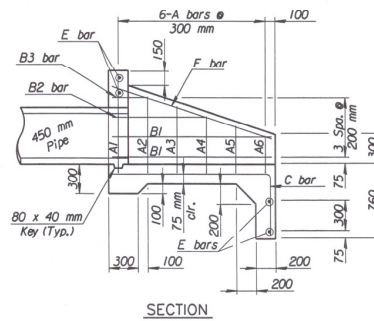
STATE	PROJECT NO.	YEAR	SHEET NO.	TOTAL SHEETS
KANSAS	54-87 K-6657-01	2002	148	1122



PLAN



FRONT

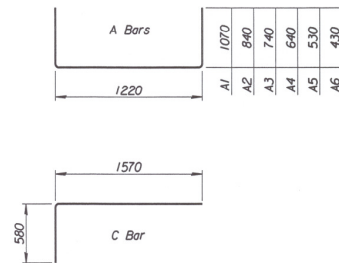


SECTION

RE-BAR SCHEDULE [±]				
Mark	Shape	No.	Length	Mass
A1	□	1	3360	3.34
A2	□	1	2900	2.88
A3	□	1	2700	2.68
A4	□	1	2500	2.49
A5	□	1	2280	2.27
A6	□	1	2080	2.07
B1	—	4	1650	6.56
B2	—	2	1070	2.13
B3	—	2	430	0.85
C	—	5	2150	10.69
DI	—	4	760	3.02
E	—	4	1320	5.25
F	—	2	1750	3.48
Total Rebars			48	Kg
Concrete			1.25	m ³

All Concrete Reinforcement to be 13# bars.

± For Information Only



BENDING DIAGRAMS

450 mm HEADWALL

CONCRETE HEADWALL NOTES

CONCRETE: Bevel all exposed edges with a 75 mm triangular molding or finish with an approved edging tool. Concrete shall be as per City of Wichita Standard Specifications for concrete paving mix except that it shall have a minimum 28 day compressive strength of 27.58 MPa. All pipes shall be flush cut prior to being cast into the Headwall.

REINFORCING STEEL: All dimensions relative to reinforcing steel are to centerline of bar unless otherwise noted. All clearances shall be 50 mm unless otherwise noted. All reinforcing steel shall conform to A.S.T.M. Designation A615M-96 Grade 420 and shall be epoxy coated.

PAYMENT: No deduction in concrete quantities has been made for the pipe opening. The Headwall (450 mm) Reinforced Concrete shall be paid for at the unit price bid per each in place including Concrete, Reinforcing Steel, Excavation and all other miscellaneous materials, Labor, Tools, Equipment and Incidentals necessary to complete the work. Quantities shown are for Information Only.

1			
No.	Revisions	By	Date
CITY OF WICHITA			
450 mm HEADWALL DETAILS			
SEDGWICK COUNTY			
 Professional Engineering Consultants, P.A. 303 S. TOPEKA • WICHITA, KANSAS 67202 316-262-2991 • FAX 316-262-3003			
Designed by	Checked by		
Drawn by	BJS, GDR	Date	Apr 11, 2002
		Job No.	97362