

FHWA REGION NO.	STATE	PROJECT NO.	YEAR	SHEET NO.	TOTAL SHEETS
7	KANSAS	54-87 K-6657-01	2002	153	1122

ADDITIONAL WORK:

Sta. 14+924 - LT.
Construct Inlet (Special) to drain water from north-south ditch on private property to the north.
Connect 200 mm PVC pipe to storm water sewer (RCPHE).
See Change Order #2.

ADDITIONAL WORK:

Sta. 14+993 - LT.
Construct Inlet (Special) to drain water from north-south drainage swale on private property to the north.
Connect 200 mm PVC pipe to storm water sewer (RCPHE).
See Change Order #2.

* Construct 200mm masonry plug in inlet opening. (Subsidiary).

Sta. 14+700 Construct Curb Inlet (Type 22) Lt. * Install 0.55m² x 87.48m Storm Sewer (RCPHE) (W) See Sh. Nos. 138, 169, & 187

Sta. 14+750 Construct Curb Inlet (Type 22) Lt. * Install 0.55m² x 47.55m Storm Sewer (RCPHE) (W) See Sh. Nos. 138, 169, & 187

Sta. 14+853 Construct Curb Inlet (Type 22) Lt. Install 0.55m² x 100.58m Storm Sewer (RCPHE) (W) See Sh. Nos. 138, 169, & 187

Sta. 14+840 Exist @ Construct Curb Inlet (Type 22) Lt. Install 375mm x 15.24m Storm Sewer (RCP) (N) See Sh. Nos. 138, 169, & 187

Sta. 14+915 Construct Curb Inlet (Type 22) Lt. Install 0.55m² x 29.57m Storm Sewer (RCPHE) (W) See Sh. Nos. 138, 169, & 187

Sta. 14+950 Construct Gutter Inlet Lt. Install 450mm x 47.24m Storm Sewer (RCP) (W) See Sh. Nos. 139, 169, & 187

Sta. 14+972 Construct Curb Inlet (Type 22) Lt. Install 0.3m² x 54.56m Storm Sewer (RCPHE) (W) See Sh. Nos. 138, 169, & 187

Sta. 14+883 Construct Curb Inlet (Type 22) Lt. Install 0.55m² x 27.43m Storm Sewer (RCPHE) (W) See Sh. Nos. 138, 169, & 187

Sta. 14+902 Construct Gutter Inlet (Special) Lt. Install 450mm x 11.89m Storm Sewer (RCP) (N) See Sh. Nos. 139, 169, & 187

Sta. 14+995 Construct Gutter Inlet Lt. Install 375mm x 44.50m Storm Sewer (RCP) (W) See Sh. Nos. 139, 169, & 187

Sta. 14+620 Construct Curb Inlet (Type 22) Rt. Install 0.35m² x 30.48m Storm Sewer (RCPHE) (W) See Sh. Nos. 138, 165, & 184

Sta. 14+657 Construct Curb Inlet (Type 22) Rt. Install 0.35m² x 34.44m Storm Sewer (RCPHE) (W) See Sh. Nos. 138, 165, & 184

Sta. 14+699 Construct Curb Inlet (Type 22) Rt. Install 600mm x 39.62m Storm Sewer (RCP) (W) See Sh. Nos. 138, 165, & 184

Sta. 14+738 Construct Curb Inlet (Type 22) Rt. Install 450mm x 36.58m Storm Sewer (RCP) (W) See Sh. Nos. 138, 165, & 184

Sta. 14+781.33 Construct Ditch Inlet 13.2m Rt. 13.3m Install 375mm x 14.63m 10.30m Storm Sewer (RCP) (NW) See Sh. Nos. 140, 165, & 184

Sta. 14+772 Construct R.C. Manhole 2.25m - Rt. 3.0m Install 375mm x 32.31m 42.03m Storm Sewer (RCP) (W) See Sh. Nos. 142, 165, & 184

Sta. 14+807 Construct Inlet - M.H. (Special) 5m Rt. Install 375mm x 34.14m 24.42m Storm Sewer (RCP) (W) See Sh. Nos. 141, 165, & 184

Sta. 14+854 Construct Curb Inlet (Type 22) Rt. Install 375mm x 20.42m Storm Sewer (RCP) (E) See Sh. Nos. 138, 168, & 185

Sta. 14+877 Construct Curb Inlet (Type 22) Rt. Install 450mm x 37.49m Storm Sewer (RCP) (E) See Sh. Nos. 138, 168, & 185

Sta. 14+917 Construct Curb Inlet (Type 22) Rt. Install 600mm x 55.47m Storm Sewer (RCP) (E) See Sh. Nos. 138, 168, & 185

Sta. 14+950 Construct Gutter Inlet Lt. Install 375mm x 47.24m Storm Sewer (RCP) (W) See Sh. Nos. 139, 168, & 185

Sta. 14+975 Construct Curb Inlet (Type 22) Rt. Install 750mm x 47.55m Storm Sewer (RCP) (E) See Sh. Nos. 138, 168, & 185

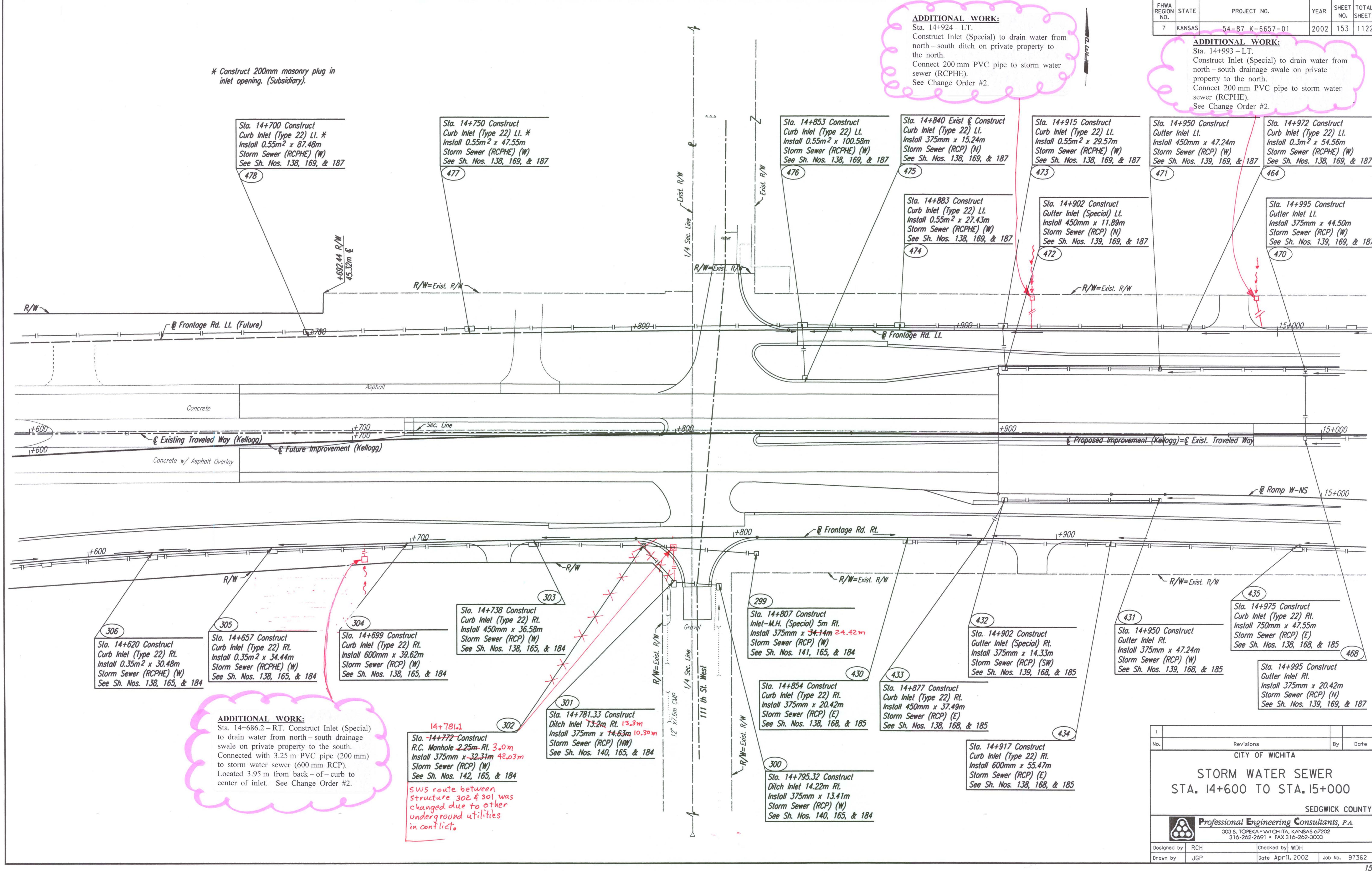
Sta. 14+995 Construct Gutter Inlet Lt. Install 375mm x 20.42m Storm Sewer (RCP) (N) See Sh. Nos. 139, 169, & 187

ADDITIONAL WORK:
Sta. 14+686.2 - RT. Construct Inlet (Special) to drain water from north-south drainage swale on private property to the south. Connected with 3.25 m PVC pipe (200 mm) to storm water sewer (600 mm RCP). Located 3.95 m from back-of-curb to center of inlet. See Change Order #2.

14+781.1
SWS route between structure 302 & 301 was changed due to other underground utilities in conflict.

DATE	
BY	
REFERENCES NOTED	
REFERENCES CHECKED	

DSMR: JPS OPER: JGP SCALE: 1:500
I:/1997/97362/SWS/SWS146.DGN 12-06-1999 14:56:32 LAST REV: 2-5-2002 BY: svb



No.	Revisions	By	Date

CITY OF WICHITA

STORM WATER SEWER
STA. 14+600 TO STA. 15+000

SEDGWICK COUNTY

Professional Engineering Consultants, P.A.
303 S. TOPEKA • WICHITA, KANSAS 67202
316-262-2691 • FAX 316-262-3003

Designed by	RCH	Checked by	WDH
Drawn by	JGP	Date	Apr 11, 2002
		Job No.	97362