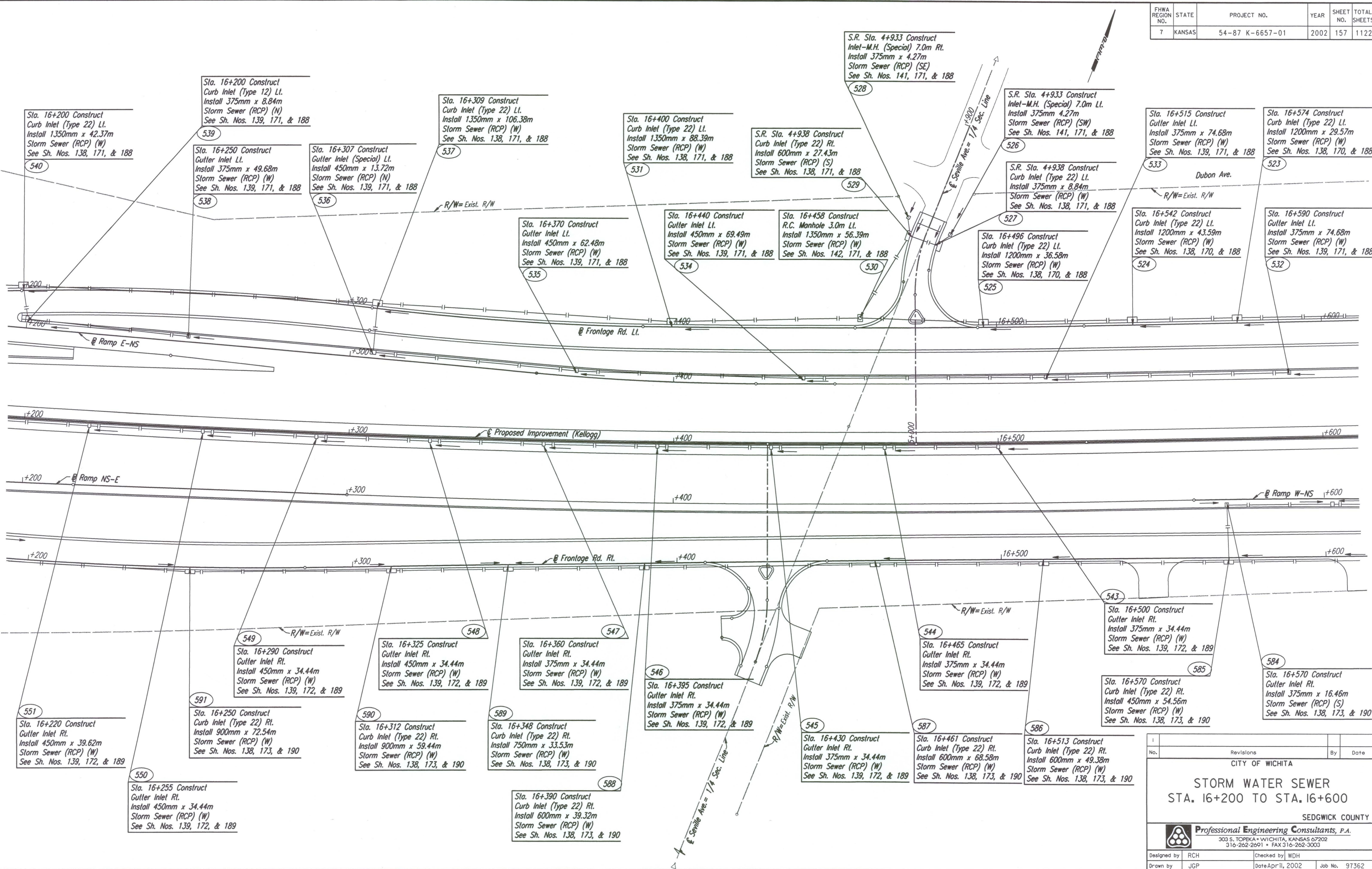


FWHA REGION NO.	STATE	PROJECT NO.	YEAR	SHEET NO.	TOTAL SHEETS
7	KANSAS	54-87 K-6657-01	2002	157	1122

DATE	
BY	
REFERENCES NOTED	
REFERENCES CHECKED	

DSNR: JPS OPER: JGP SCALE: 1:500
 I:/1997/97362/SWS/SWS162.DGN 11-22-1999 13:54:18 LAST REV: 2-6-2002 BY: svb



No.		Revisions		By	Date
CITY OF WICHITA					
STORM WATER SEWER STA. 16+200 TO STA. 16+600					
SEDGWICK COUNTY					
Professional Engineering Consultants, P.A. 303 S. TOPEKA • WICHITA, KANSAS 67202 316-262-2691 • FAX 316-262-3003					
Designed by	RCH	Checked by	WDH		
Drawn by	JGP	Date	April, 2002	Job No.	97362