

| FHWA REGION NO. | STATE  | PROJECT NO.     | YEAR | SHEET NO. | TOTAL SHEETS |
|-----------------|--------|-----------------|------|-----------|--------------|
| 7               | KANSAS | 54-87 K-6657-01 | 2002 | 161       | 1122         |

**NOTE:**

- Additional SWS Gutter Inlet (#763-A) installed to accommodate increased local drainage area created by surrounding PC concrete pavement not being constructed exactly to plan grade & cross-slope.
- Slotted Drain deleted. See C.O.#2.

S.R. Sta. 4+927 Construct Inlet Manhole (Special) 6.100m Rt. Install 375mm x 36.58m Storm Sewer (RCP) (S) See Sh. Nos. 141, 179, & 194

S.R. Sta. 4+930 Install 600mm End Section 8.300m Lt. Install 600mm x 35.66m Storm Sewer (RCP) (S) See Sh. Nos. 179, & 194

Sta. 18+171.843 Construct Curb Inlet (Type 22) (Radius) 4.222m Lt. Install 450mm x 16.76m Storm Sewer (RCP) (E) See Sh. Nos. 137, 179, & 194

Sta. 18+188 Construct R.C. Manhole 2.5m Lt. Install 600mm x 12.50m Storm Sewer (RCP) (E) See Sh. Nos. 142, 179, & 194

Sta. 18+187.5 Construct Gutter Inlet Lt. Install 375mm x 11.89m Storm Sewer (RCP) (N) See Sh. Nos. 139, 179, & 194

Sta. 18+202 Construct Curb Inlet (Type 22) Lt. Install 750mm x 67.97m Storm Sewer (RCP) (E) See Sh. Nos. 138, 179, & 194

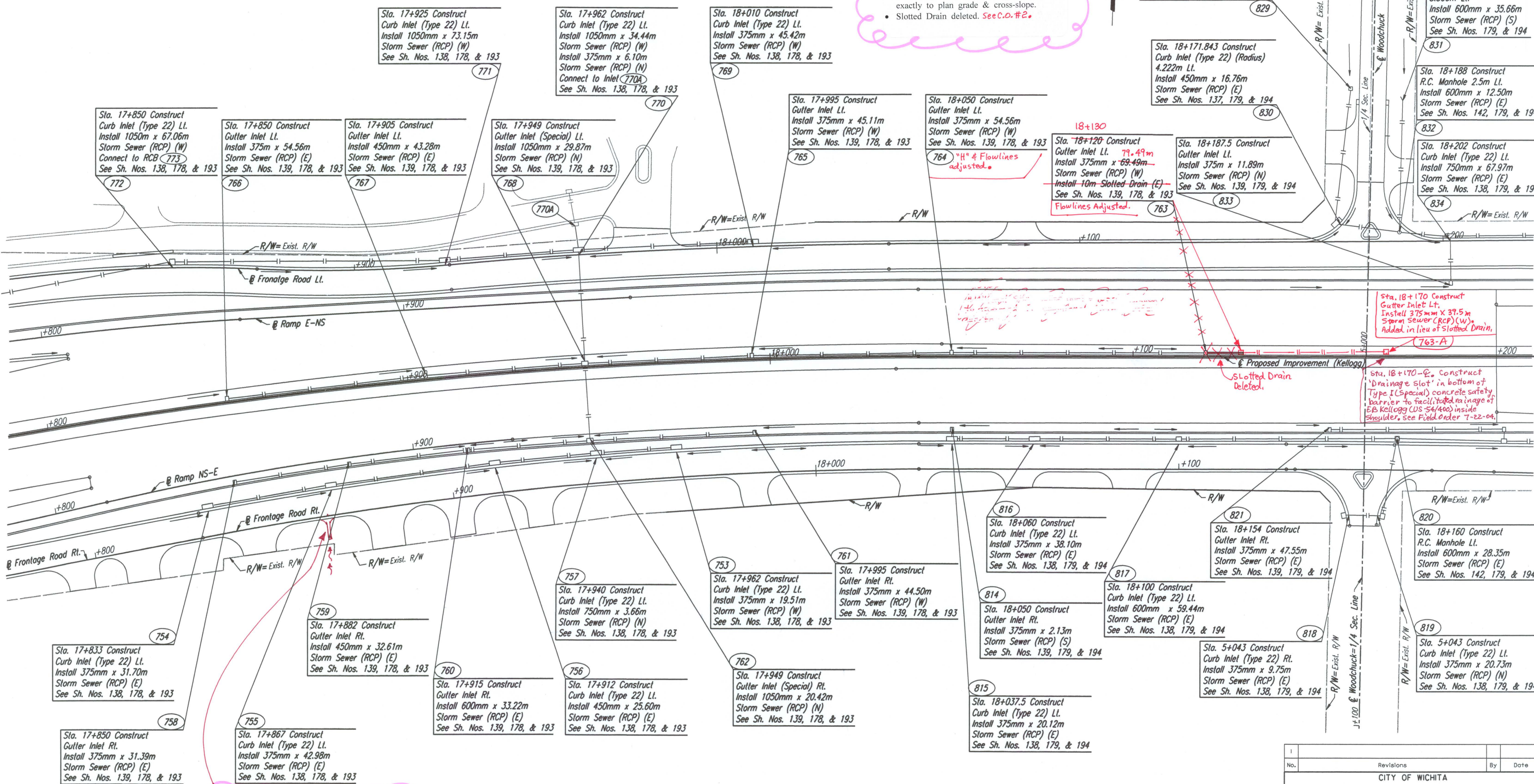
Sta. 18+120 Construct Gutter Inlet Lt. Install 375mm x 69.49m Storm Sewer (RCP) (W) Install 10m Slotted Drain (E) See Sh. Nos. 139, 178, & 193  
Flowlines Adjusted.

Sta. 18+170 Construct Gutter Inlet Lt. Install 375mm x 39.5m Storm Sewer (RCP) (W) Added in lieu of Slotted Drain. (#763-A)

Sta. 18+170-E Construct 'Drainage slot' in bottom of Type I (Special) concrete safety barrier to facilitate drainage of E.B. Kellogg (US-54/400) inside shoulder. See Field Order T-22-04.

|                    |  |
|--------------------|--|
| DATE               |  |
| BY                 |  |
| REFERENCES NOTED   |  |
| REFERENCES CHECKED |  |

DSMR: JPS OPER: JGP SCALE: 1:500  
 1/1997/97362/SWS/SWST178.DGN 11-22-999 14:01:50 LAST REV: 2-5-2002 BY: svb



**EXTRA - WORK:**  
 Sta. 17+864 - RT.  
 Install PC Concrete Drainage Flume (0.75 m width x 6.2 m length) to drain water from north-south drainage swale on private property to the south.  
 See Change Order #3.

|     |           |    |      |
|-----|-----------|----|------|
| No. | Revisions | By | Date |
|     |           |    |      |

CITY OF WICHITA

**STORM WATER SEWER  
 STA. 17+800 TO STA. 18+200**

SEDGWICK COUNTY

**Professional Engineering Consultants, P.A.**  
 303 S. TOPEKA • WICHITA, KANSAS 67202  
 316-262-2691 • FAX 316-262-3003

|             |     |            |             |
|-------------|-----|------------|-------------|
| Designed by | RCH | Checked by | WDH         |
| Drawn by    | JGP | Date       | April, 2002 |
|             |     | Job No.    | 97362       |