

FHWA REGION NO.	STATE	PROJECT NO.	YEAR	SHEET NO.	TOTAL SHEETS
7	KANSAS	54-87 K-6657-01	2002	197	1122

WATER MAIN CONSTRUCTION SEQUENCE

THE FOLLOWING ITEMS SHALL BE CONSTRUCTED DURING STAGE I OF THE TRAFFIC HANDLING AND CONSTRUCTION SEQUENCING AS SHOWN ON SHEETS 793 AND 794.


- | ITEM NO. | DESCRIPTION |
|---|--|
| 1. | REMOVE EXISTING 406MM WATER MAIN FROM @ US-54 STA. 17+122, 11.63 M LT. TO @ US-54 STA. 17+137, 11.63 M LT. CAP EXISTING MAIN EACH DIRECTION. EXISTING 406MM WATER MAIN MUST REMAIN ACTIVE ON EACH SIDE OF THE MAIN TO BE REMOVED. CONTRACTOR SHALL MOVE SERVICE CONNECTIONS TO ACTIVE WATER MAINS AS REQUIRED AT THIS LOCATION TO MAINTAIN WATER SERVICE. |
| 2. | REMOVE EXISTING 406MM WATER MAIN FROM @ TYLER ROAD STA. 4+931.0, 7.9 M LT. TO @ TYLER ROAD STA. 4+964.5, 6.5 M LT. CAP EXISTING MAIN EACH DIRECTION. EXISTING 406MM WATER MAIN MUST REMAIN ACTIVE ON EACH SIDE OF THE MAIN TO BE REMOVED. CONTRACTOR SHALL MOVE SERVICE CONNECTIONS TO ACTIVE WATER MAIN AS REQUIRED AT THIS LOCATION TO MAINTAIN WATER SERVICE. |
| 3. | LINE NO. 2 WATERLINE STA. 1+831.729 TO 1+936.666 |
| 4. | LINE NO. 8 WATERLINE STA. 0+000.000 TO 0+109.280. |
| NOTE: ITEMS NO. 3 AND 4 SHALL BE COMPLETED, TESTED, DISINFECTED, AND ACCEPTED SO THAT SERVICES MAY BE CONNECTED TO THE NEW LINE PRIOR TO COMMENCING WITH OTHER CONSTRUCTION. | |
| 5. | LINE NO. 6 WATERLINE STA. 0+000.000 TO 0+298.194 |
| 6. | LINE NO. 8A WATERLINE STA. 0+000.000 TO 0+28.682 |
| 50MM SERVICE CONNECTIONS - TYLER ROAD - SEE SHEET 203. | |
| NOTE: ITEMS NO. 5 AND 6 SHALL BE COMPLETED, TESTED, DISINFECTED, AND ACCEPTED SO THAT SERVICES MAY BE CONNECTED TO THE NEW LINE PRIOR TO COMMENCING WITH OTHER CONSTRUCTION. | |
| 7. | SERVICE LOWERING - MAIZE ROAD - SEE SHEET 226. |
| 8. | LINE NO. 1 WATERLINE STA. 0+000.000 TO 1+674.425. |
| 9. | LINE NO. 3 WATERLINE STA. 0+000.000 TO 0+191.423. |
| 10. | LINE NO. 10 WATERLINE STA. 0+000.000 TO 0+103.572. |
| 11. | CUT AND CAP EXIST. 200MM WATER MAIN @ 119TH STREET W. @ 300MM X 200MM TEE. INSTALL TEMP. BLOWOFF ON EXIST. 200MM MAIN TO EAST. (COORDINATE THIS WORK WITH CITY OF GODDARD.) |
| 12. | INSTALL NEW SERVICE TAP AND METER (2 REQ'D.) - SEE SHEET 227. |
| NOTE: ITEMS NO. 8 THRU 12 SHALL BE COMPLETED, TESTED, DISINFECTED, AND ACCEPTED SO THAT SERVICES MAY BE CONNECTED TO THE NEW LINE PRIOR TO COMMENCING WITH OTHER CONSTRUCTION. | |
| 13. | LINE NO. 2 WATERLINE STA. 0+000.000 TO 1+000.772. |
| 14. | LINE NO. 5 WATERLINE STA. 0+000.000 TO 0+142.073. |
| 15. | LINE NO. 7 WATERLINE STA. 0+000.000 TO 0+026.644. |
| NOTE: ITEMS NO. 13, 14, AND 15 SHALL BE COMPLETED, TESTED, DISINFECTED, AND ACCEPTED SO THAT SERVICES MAY BE CONNECTED TO THE NEW LINE PRIOR TO COMMENCING WITH OTHER CONSTRUCTION. | |
| 16. | LINE NO. 4 WATERLINE STA. 0+000.000 TO 0+396.871. |
| NOTE: ITEM NO. 16 SHALL BE COMPLETED, TESTED, DISINFECTED, AND ACCEPTED SO THAT SERVICES MAY BE CONNECTED TO THE NEW LINE PRIOR TO COMMENCING WITH OTHER CONSTRUCTION. | |
| 17. | LINE NO. 1 WATERLINE STA. 1+674.425 TO 2+462.445. |
| NOTE: ITEM NO. 17 SHALL BE COMPLETED, TESTED, DISINFECTED, AND ACCEPTED SO THAT SERVICES MAY BE CONNECTED TO THE NEW LINE PRIOR TO COMMENCING WITH OTHER CONSTRUCTION. | |
| 18. | LINE NO. 2 WATERLINE STA. 1+000.772 TO 1+831.729. |
| 19. | LINE NO. 2A WATERLINE STA. 0+000.000 TO 0+027.247. |
| NOTE: ITEMS NO. 18 AND 19 SHALL BE COMPLETED, TESTED, DISINFECTED, AND ACCEPTED SO THAT SERVICES MAY BE CONNECTED TO THE NEW LINE PRIOR TO COMMENCING WITH OTHER CONSTRUCTION. | |
| 20. | LINE NO. 9 WATERLINE STA. 0+000.000 TO 0+182.584. |

RECORD DRAWING

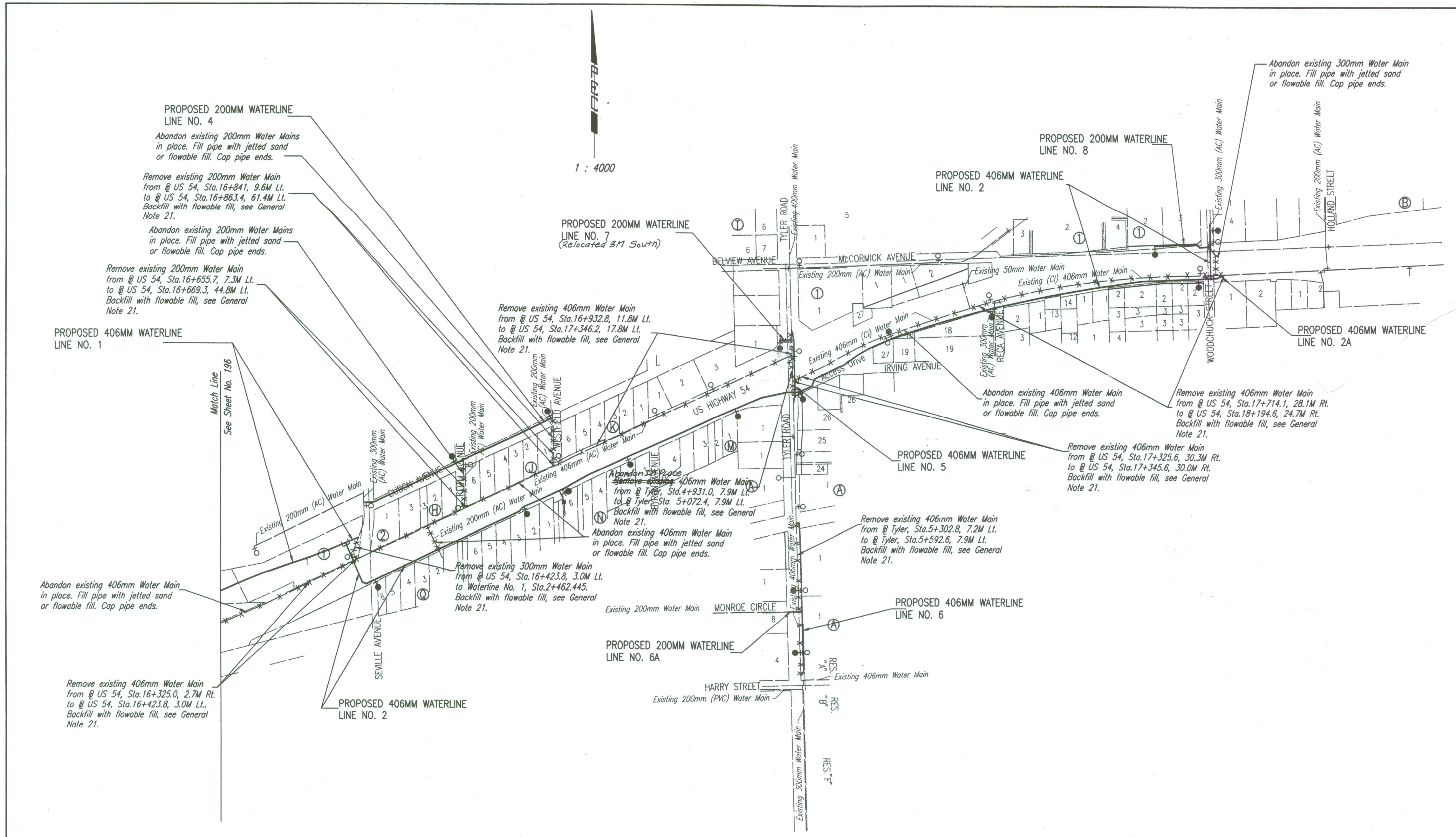
Larry D. Powell
10-18-04

LEGEND

EXISTING WATER MAIN	---
PROPOSED WATER MAIN	---
EXISTING WATER VALVE	+
PROPOSED WATER VALVE	+
EXISTING FIRE HYDRANT	⊙
PROPOSED FIRE HYDRANT	⊙
EXISTING BLOW OFF	+
PROPOSED BLOW OFF	+

1			
No.	Revisions	By	Date
CITY OF WICHITA, KANSAS			
KEY MAP AND CONSTRUCTION SEQUENCE			
SEDGWICK COUNTY			
 Professional Engineering Consultants, P.A. 303 S. TOPEKA - WICHITA, KANSAS 67202 316-262-2691 • FAX 316-262-3003			
Designed by	KJW	Checked by	
Drawn by	TDS, JGA	Date	APRIL, 2002
		Job No.	97362

DSNR: KJW OPER: TDS SCALE: 1"=4'00' 10:53:17 am
 G:\1997\91562\007\Keymap8 04-12-2002



1 : 4000